

PORTERVILLE, CALIFORNIA

AL-569 (FAA)

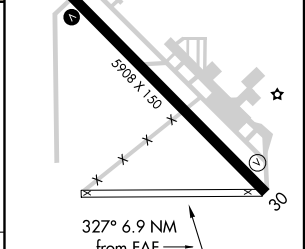
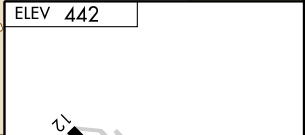
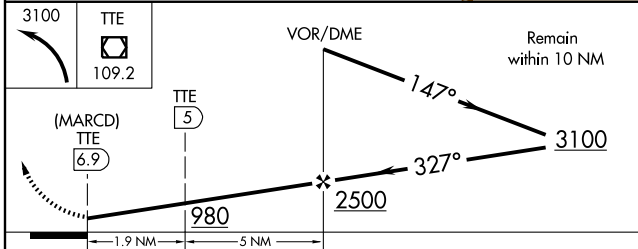
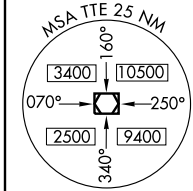
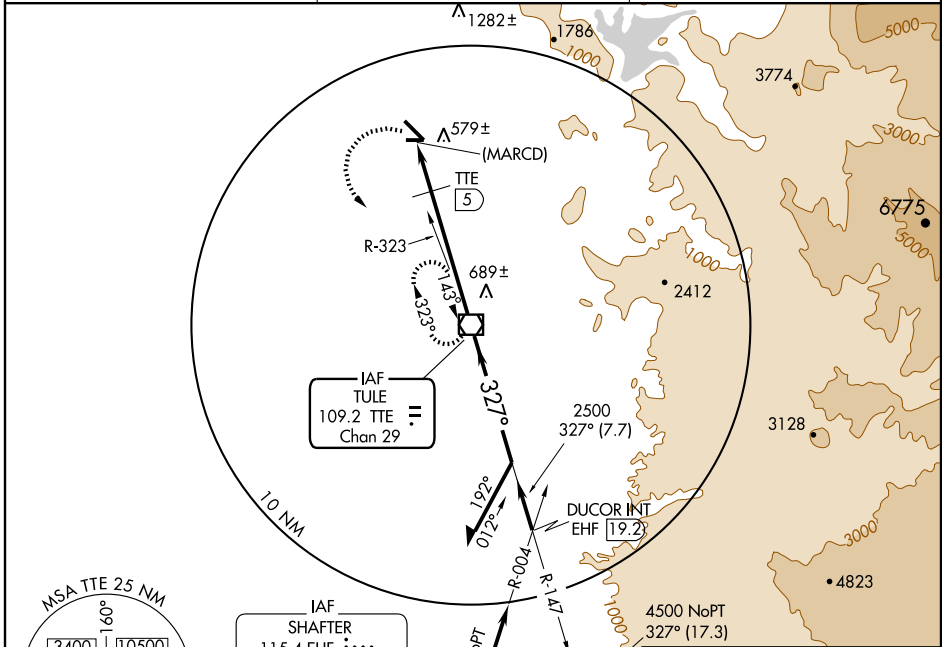
VOR/DME TTE 109.2 Chan 29	APP CRS 327°	Rwy Idg TDZE Apt Elev 442	N/A N/A 442
--	------------------------	---	--

VOR or GPS-A

PORTERVILLE MUNI (P'TV)

▽ MISSED APPROACH: Climbing left turn to 3100 direct TTE VOR/DME and hold.

AWOS-3 134.625	BAKERFIELD APP CON★ 120.5	UNICOM 122.8 (CTAF) 0
--------------------------	-------------------------------------	---------------------------------



CATEGORY	A	B	C	D
CIRCLING	980-1 538 (600-1)		980-1½ 538 (600-½)	1000-2 558 (600-2)
DME MINIMA				
CIRCLING	880-1 438 (500-1)	900-1 458 (500-1)	900-1½ 458 (500-½)	1000-2 558 (600-2)

REIL Rwy 30 HIRL Rwy 12-30 0	FAF to MAP 6.9 NM					
	Knots	60	90	120	150	180
	Min:Sec	6:54	4:36	3:27	2:46	2:18

PORTERVILLE, CALIFORNIA
Amdt 1 05244

36°02'N-119°04'W

PORTERVILLE MUNI (P'TV)

VOR or GPS-A

SW-2, 22 OCT 2009 to 19 NOV 2009

SW-2, 22 OCT 2009 to 19 NOV 2009