

WAAS CH 50211 W13A	APP CRS 126°	Rwy Idg 11802 TDZE 191 Apt Elev 191
--	------------------------	--

RNAV (GPS) RWY 13

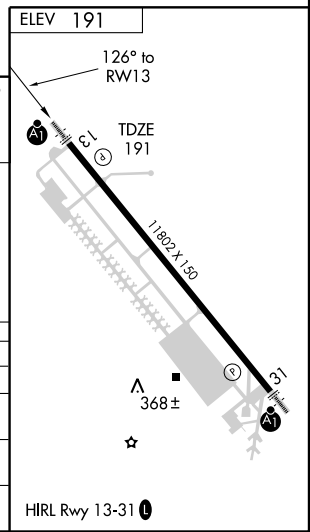
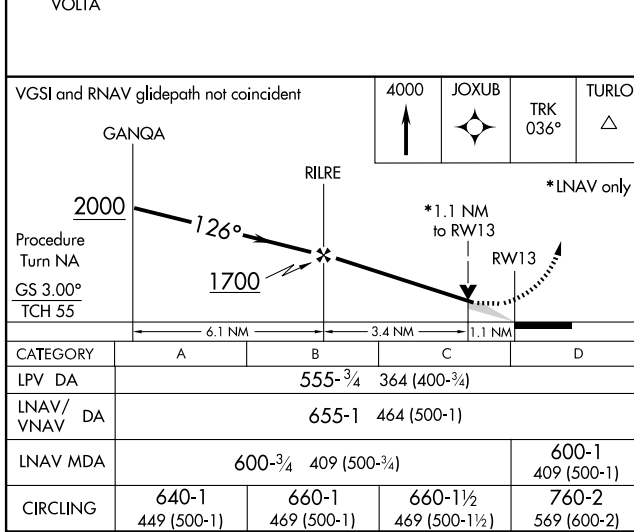
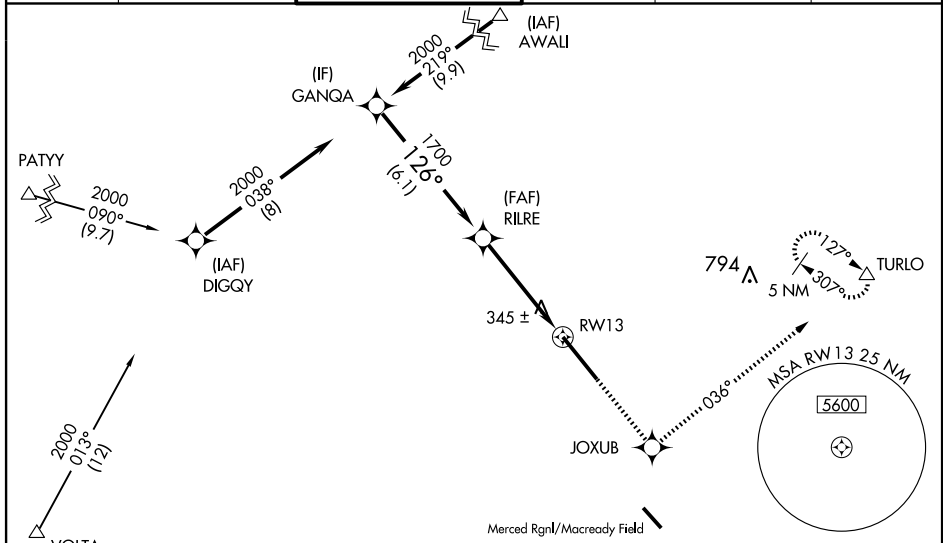
MERCED/ CASTLE (MERC)

⚠ Circling NA SW of Rwy 13-31. Baro-VNAV NA when using Merced Rgnl/Macready Field altimeter setting. For uncompensated Baro-VNAV systems, LNAV/VNAV NA below -15°C (5°F) or above 48°C (118°F). DME/DME RNP-0.3 NA. VDP NA when using Merced Rgnl/Macready Field altimeter setting. When local altimeter setting not received, use Merced Rgnl/Macready Field altimeter setting and increase all DA/MDA 20 feet and LNAV/VNAV visibility ¼ mile. For inoperative ALSF-1 increase visibility LPV all Cats and LNAV Cat D to 1½, and LNAV Cats A and B to 1. For inoperative ALSF-1 when using Merced Rgnl/Macready Field altimeter setting, increase visibility LPV all Cats to 1½, and LNAV Cats A and B to 1.

ALSF-1
ⓐ

MISSED APPROACH:
Climb to 4000 direct JOXUB and via track 036° to TURL0 and hold, continue climb-in-hold to 4000.

ATIS 124.475	NORCAL APP CON 120.95 269.45	CASTLE TOWER * 118.175 (CTAF) 235.775	GND CON 133.575	UNICOM 122.95	123.00 ⓐ
------------------------	--	---	---------------------------	-------------------------	------------------------



SW-2, 22 OCT 2009 to 19 NOV 2009

SW-2, 22 OCT 2009 to 19 NOV 2009