

HARVARD, NEBRASKA

AL-565 (FAA)

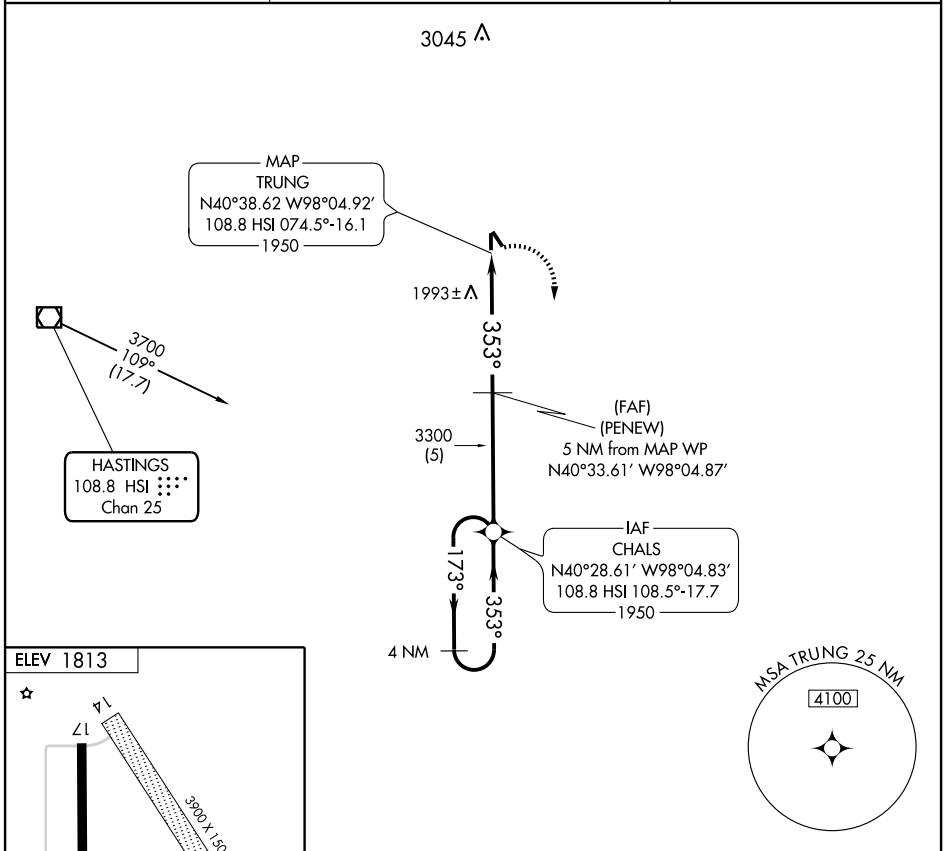
HSI VOR/DME 108.8 Chan 25	APP CRS 353°	Rwy Idg 3745 TDZE 1807 Apt Elev 1813
---	------------------------	---

VOR/DME RNAV or GPS RWY 35

HARVARD STATE (Ø8K)

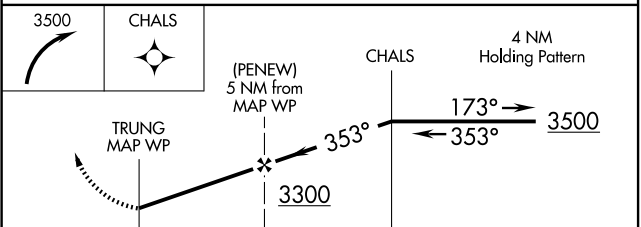
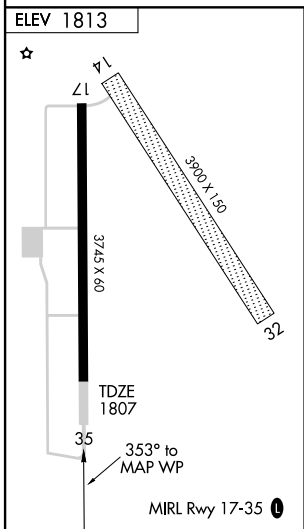
▲ NA	Use Aurora altimeter setting; if not received, use Grand Island altimeter setting and increase all MDA's 20 feet.	MISSED APPROACH: Climbing right turn to 3500 direct CHALS WP and hold.
-------------	---	---

AURORA AWOS-3 121.225	MINNEAPOLIS CENTER 119.4 278.8	CTAF 122.9 0
--	---	-------------------------------



NC-2, 22 OCT 2009 to 19 NOV 2009

NC-2, 22 OCT 2009 to 19 NOV 2009



CATEGORY	A	B	C	D
S-35	2280-1	473 (500-1)	NA	
CIRCLING	2280-1	467 (500-1)	NA	

HARVARD, NEBRASKA
Orig 02332

40°39' N-98°05' W

VOR/DME RNAV or GPS RWY 35

HARVARD STATE (Ø8K)