

DOVER, DELAWARE

VOR/DME RWY 32

VORTAC ENO 111.4 Chan 51	APCH CRS 344°	Rwy ldg 12,903 TDZE 26 Arpt Elev 28
--	-------------------------	--

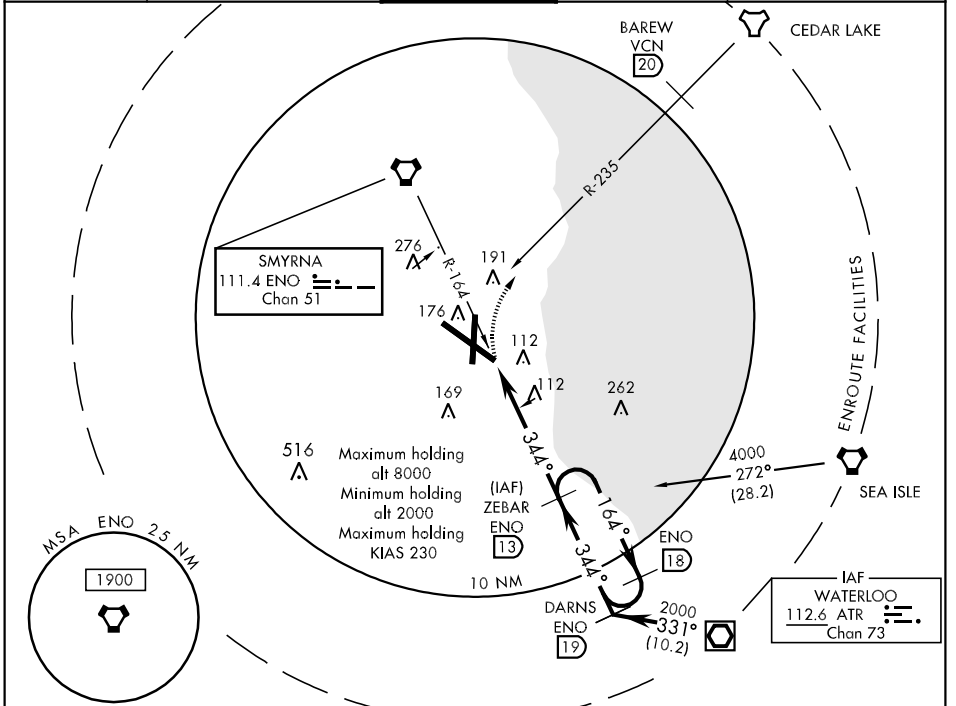
AL-562 [USAF]

DOVER AFB (KDOV)

▼ * Circling not authorized SW of Rwy 1 and 14.

MISSED APPROACH: Climbing right turn to 2000 heading 040° to intercept VCN R-235 to BAREW (VCN R-235/20). Expect further clearance with ATC.

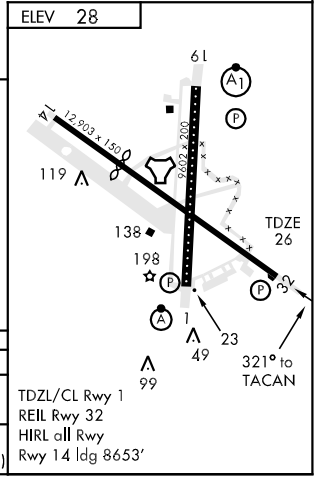
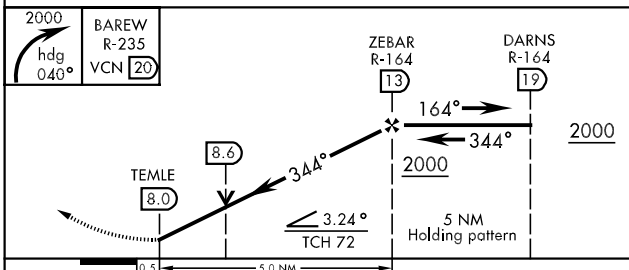
ATIS 135.05 273.5	DOVER APP CON 132.425 257.875	DOVER TOWER 126.35 279.625	GND CON 118.875 225.4	CLNC DEL 125.55 289.4
-----------------------------	---	--------------------------------------	---------------------------------	---------------------------------



NE-3, 22 OCT 2009 to 19 NOV 2009

NE-3, 22 OCT 2009 to 19 NOV 2009

EMERG SAFE ALT 100 NM 4500 FROM "ENO" VORTAC



CATEGORY	A	B	C	D	E
S-32	460-1	434 (500-1)	460-1½ 434 (500-1½)	460-1½	434 (500-1½)
CIRCLING *	500-1 472 (500-1)	520-1 492 (500-1)	520-1½ 492 (500-1½)	580-2 552 (600-2)	1060-3 1032(1100-3)

TDZL/CL Rwy 1
REIL Rwy 32
HIRL all Rwy
Rwy 14 ldg 8653'

DOVER, DELAWARE
Orig 09295

39° 08' N - 75° 28' W

DOVER AFB (KDOV)

VOR/DME RWY 32