

DOVER, DELAWARE

# RNAV (GPS) RWY 1

APCH CRS <b>013°</b>	Rwy Idg <b>9602</b>
	TDZE <b>24</b>
	Arpt Elev <b>28</b>

AL-562 [USAF]

DOVER AFB (KDOV)

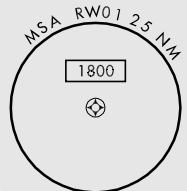
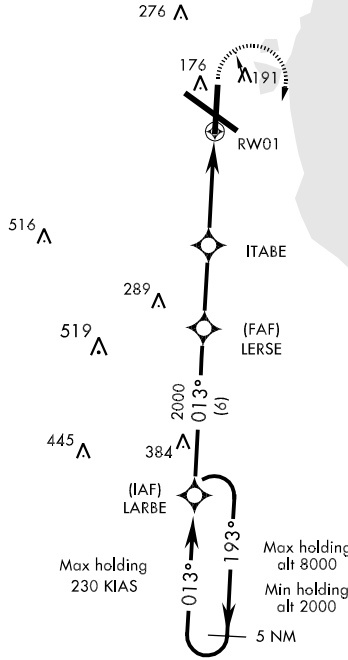
**▽** \* When ALS inop, increase CAT AB RVR to 50 and vis to 1 mile, CAT C RVR to 60 and vis to 1¼ miles, CAT DE vis to 1½ miles.  
**\*\*** Circling not authorized SW of Rwy 1 and 14.



MISSED APPROACH: Climbing right turn to 2000 direct LARBE and hold.

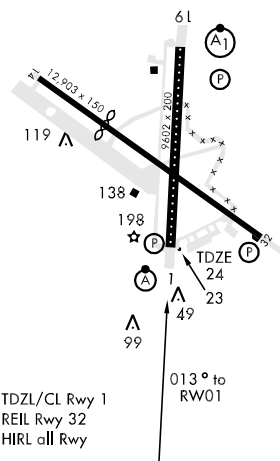
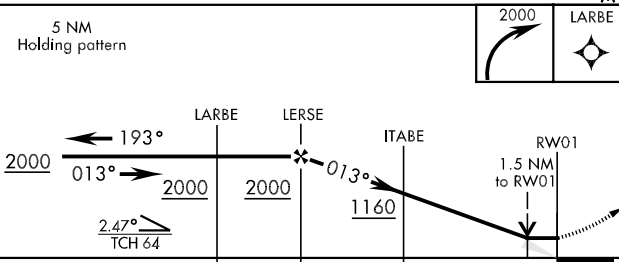
ATIS <b>135.05 273.5</b>	DOVER APP CON <b>132.425 257.875</b>	DOVER TOWER <b>126.35 279.625</b>	GND CON <b>118.875 225.4</b>	CLNC DEL <b>125.55 289.4</b>
-----------------------------	---	--------------------------------------	---------------------------------	---------------------------------

DME/DME RNP-0.3 NA.



ELEV 28  
Rwy 14 Idg 8653'

EMERG SAFE ALT 100 NM 4500



CATEGORY	A	B	C	D	E
LNAV MDA *	480/24 456 (500-½)	480/40 456 (500-¾)	480/50 456 (500-1)	480/50 456 (500-1)	480/50 456 (500-1)
CIRCLING **	500-1 472 (500-1)	520-1 492 (500-1)	520-1½ 492 (500-1½)	580-2 552 (600-2)	1060-3 1032 (1100-3)

TDZL/CL Rwy 1  
REIL Rwy 32  
HIRL all Rwy

DOVER, DELAWARE  
Amdt 1 09295

39°08'N-75°28'W

DOVER AFB (KDOV)

# RNAV (GPS) RWY 1

NE-3, 22 OCT 2009 to 19 NOV 2009

NE-3, 22 OCT 2009 to 19 NOV 2009