

CAMP SPRINGS, MARYLAND

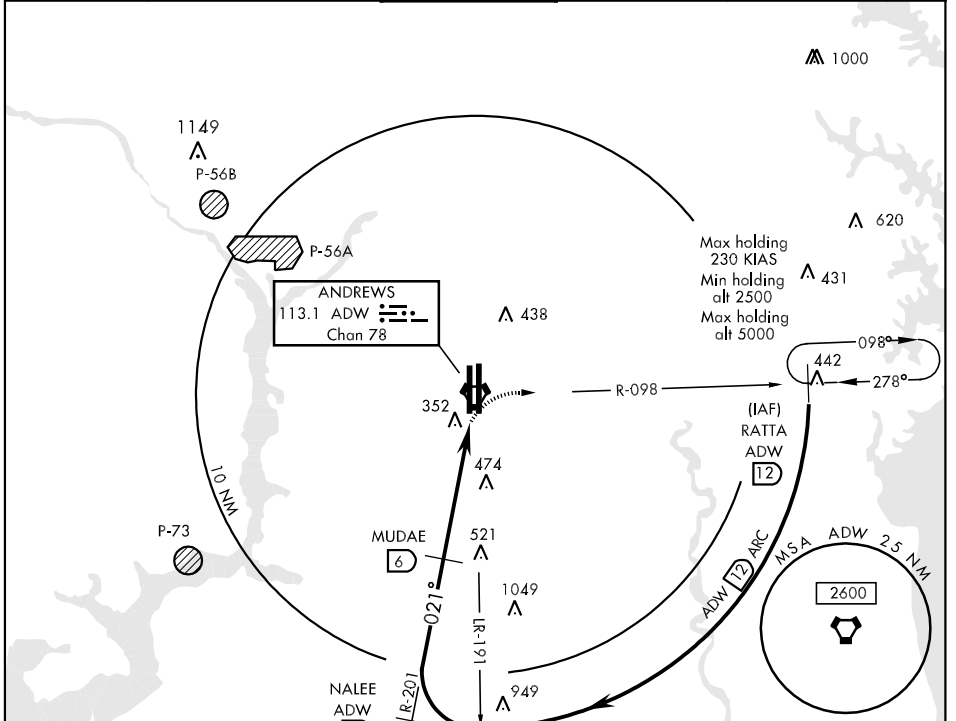
TACAN RWY 1L

VORTAC ADW 113.1 Chan 78	APCH CRS 021°	Rwy Idg TDZE Arprt Elev 9300 260 280	AL-561 [USAF]	ANDREWS AFB (KADW)
--	-------------------------	---	---------------	--------------------

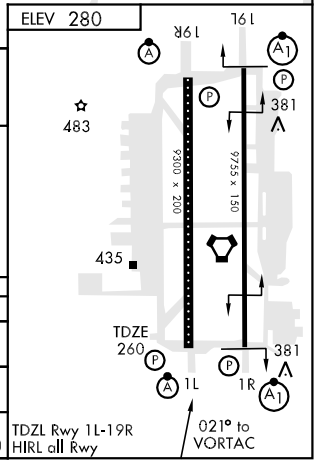
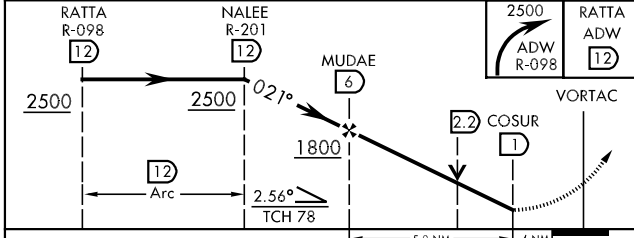
▼ * When ALS inop, increase CAT AB RVR to 50 and vis to 1 mile, CAT C RVR to 60 and vis to 1½ miles, CAT D vis to 1½ miles, CAT E vis to 1¾ miles.
 ** Circling not authorized W of Rwy 1L-19R.

ALSF-2 A
 MISSED APPROACH: Climb to 2500 via ADW VORTAC R-098 to RATTA and hold.

ATIS 113.1 251.05	POTOMAC APP CON 119.3 335.5	ANDREWS TOWER 118.4 349.0	GND CON 121.8 275.8	CLNC DEL 127.55 285.475	ASR
-----------------------------	---------------------------------------	-------------------------------------	-------------------------------	-----------------------------------	-----



EMERG SAFE ALT 100 NM 6300



CATEGORY	A	B	C	D	E
S-1L *	760/24 500 (500-½)		760/40 500 (500-¾)	760/50 500 (500-1)	760/60 500 (500-1¼)
CIRCLING **	760-1 (500-1)		760-1½ 480 (500-1½)	840-2 560 (600-2)	
S-ASR 1L *	760/24 500 (500-½)		760/40 500 (500-¾)	760/50 500 (500-1)	760/60 500 (500-1¼)

CAMP SPRINGS, MARYLAND 38° 49' N-76° 52' W ANDREWS AFB (KADW)

Orig 09127

TACAN RWY 1L

NE-3, 22 OCT 2009 to 19 NOV 2009

NE-3, 22 OCT 2009 to 19 NOV 2009