

CAMP SPRINGS, MARYLAND

NDB RWY 1L

LOM RW 360	APCH CRS 010°	Rwy Idg TDZE Arpt Elev 9300 260 280
----------------------	-------------------------	---

AL-561 [USAF]

ANDREWS AFB (KADW)

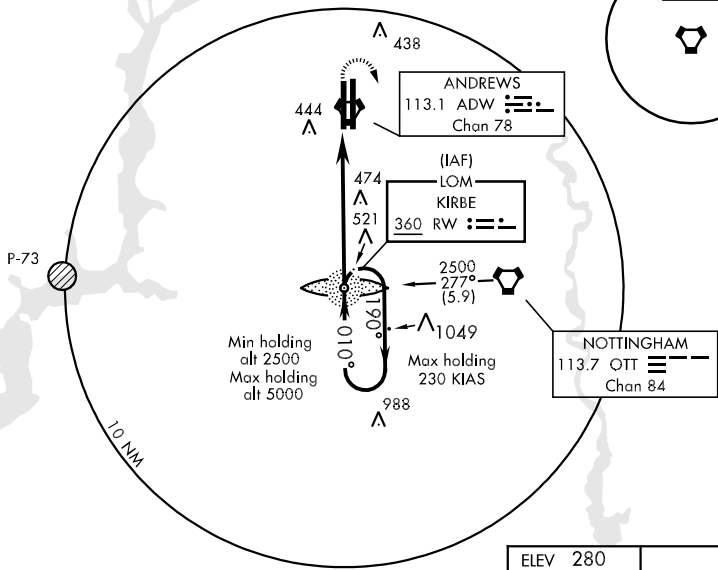
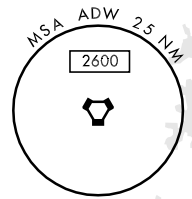
▼ *When ALS inop, increase CAT AB RVR to 50 and vis to 1 mile, CAT C vis to 1½ miles, CAT D vis to 1¾ miles, and CAT E vis to 2 miles.
**Circling not authorized W of Rwy 1L-19R.



MISSED APPROACH: Climbing right turn to 2100 direct OTT VORTAC.
Expect further clearance from APP CON.

ATIS 113.1 251.05	POTOMAC APP CON 119.3 335.5	ANDREWS TOWER 118.4 349.0	GND CON 121.8 275.8	CLNC DEL 127.55 285.475	ASR
-----------------------------	---------------------------------------	-------------------------------------	-------------------------------	-----------------------------------	-----

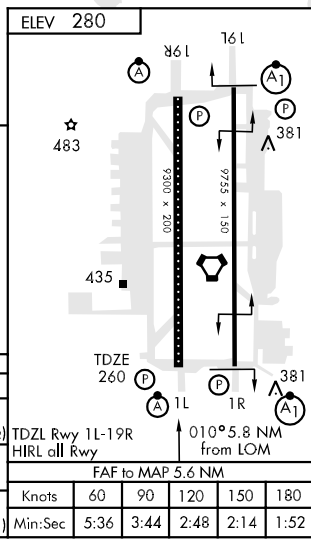
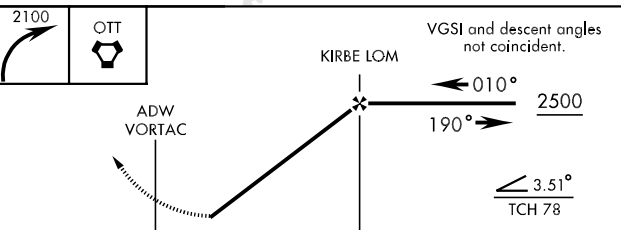
*** When ALS inop, increase CAT AB RVR to 50 and vis to 1 mile, CAT C RVR to 60 and vis to 1¼ miles, CAT D vis to 1½ miles, and CAT E vis to 1¾ miles.



NE-3, 22 OCT 2009 to 19 NOV 2009

NE-3, 22 OCT 2009 to 19 NOV 2009

EMERG SAFE ALT 100 NM 6300



CATEGORY	A	B	C	D	E
S-1L *	800/24	540 (600-½)	800/50 540 (600-1)	800/60 540 (600-1¼)	800-1½ 540 (600-1½)
CIRCLING **	800-1	520 (600-1)	800-1½ 520 (600-1½)	840-2	560 (600-2)
S-ASR 1L ***	760/24	500 (500-½)	760/40 500 (500-¾)	760/50 500 (500-1)	760/60 500 (500-1¼)

Knots	60	90	120	150	180
Min:Sec	5:36	3:44	2:48	2:14	1:52

CAMP SPRINGS, MARYLAND
Orig 09127

38° 49' N - 76° 52' W

ANDREWS AFB (KADW)

NDB RWY 1L