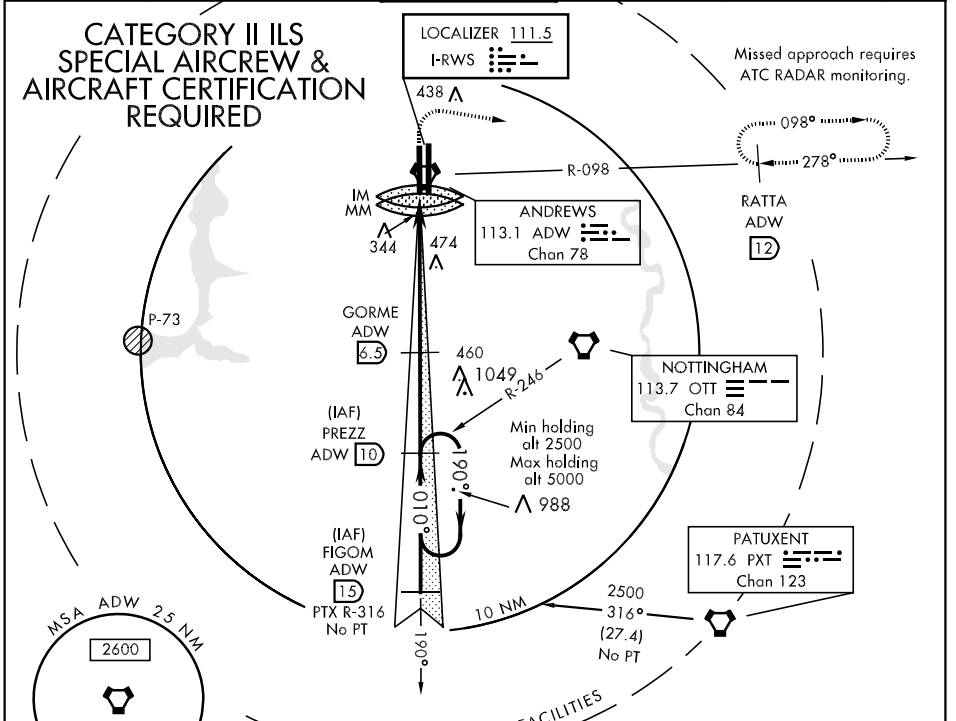


CAMP SPRINGS, MARYLAND

# ILS RWY 1L (CAT II)

LOC I-RWS <b>111.5</b>	APCH CRS <b>010°</b>	Rwy Idg TDZE Arpt Elev <b>9300</b> <b>260</b> <b>280</b>	AL-561 [USAF]	ANDREWS AFB (KADW)
---------------------------	-------------------------	---	---------------	--------------------

<b>ATIS</b> <b>113.1 251.05</b>		<b>POTOMAC APP CON</b> <b>119.3 335.5</b>		<b>ANDREWS TOWER</b> <b>118.4 349.0</b>		<b>GND CON</b> <b>121.8 275.8</b>		<b>CLNC DEL</b> <b>127.55 285.475</b>		<b>ASR</b>
------------------------------------	--	--	--	--	--	--------------------------------------	--	--	--	------------



NE-3, 22 OCT 2009 to 19 NOV 2009

NE-3, 22 OCT 2009 to 19 NOV 2009

**EMERG SAFE ALT 100 NM 6300 FROM "ADW" VORTAC**

900	2500	RATTA R-098	PREZZ ADW (10) OTT R-246	FIGOM ADW (15) PXT R-316
-----	------	-------------	--------------------------	--------------------------

**VORTAC**  
260 MSL  
IM (RA120)  
DH (RA120)  
GS 2.50° TCH 52

**ENROUTE FACILITIES:** GORME ADW (5.5), PREZZ ADW (10), FIGOM ADW (15), PTX R-316 No PT, IM MM, P-73, MSA ADW 2.5 NM (2600)

CATEGORY	A	B	C	D	E
S-ILS 1L		360/12	100	(RA120)	

**TDZL Rwy 1L-19R**  
**HIRL all Rwy**

**ELEV 280**

**Runway:** 1L, 1R  
**Width:** 161 ft  
**Length:** 9755 x 150 ft  
**Other:** 861, 483, 435, 345, 260, 256, 1R

CAMP SPRINGS, MARYLAND 38°49'N-76°52'W ANDREWS AFB (KADW)

Orig 09155 **ILS RWY 1L (CAT II)**