

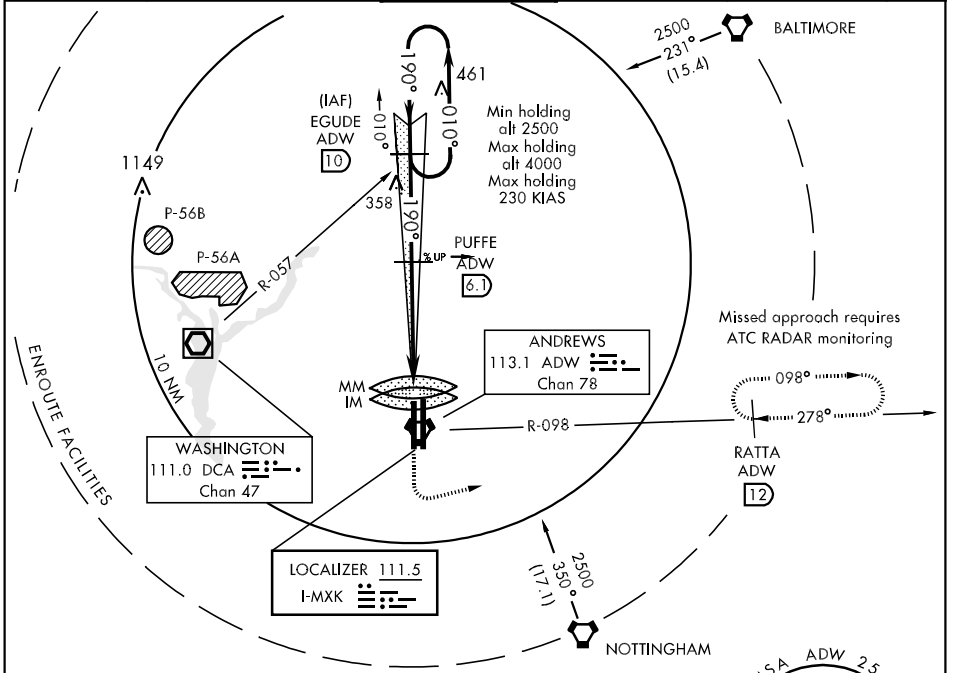
CAMP SPRINGS, MARYLAND

# ILS RWY 19R (CAT II)

LOC I-MXK <b>111.5</b>	APCH CRS <b>190°</b>	Rwy Idg TDZE <b>273</b> Arpt Elev <b>280</b>	AL-561 [USAF]	ANDREWS AFB (KADW)
---------------------------	-------------------------	---	---------------	--------------------

ALSF-2 	MISSED APPROACH: Climb to 900 then climbing left turn to 2500 direct RATTA and hold.
------------	--

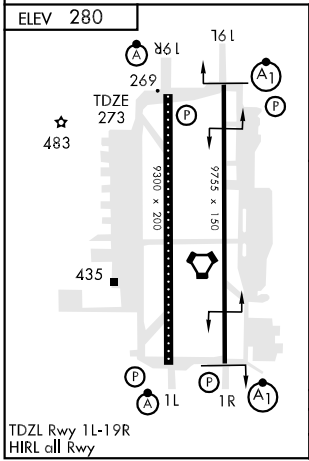
ATIS <b>113.1 251.05</b>	POTOMAC APP CON <b>119.3 335.5</b>	ANDREWS TOWER <b>118.4 349.0</b>	GND CON <b>121.8 275.8</b>	CLNC DEL <b>127.55 285.475</b>	ASR
-----------------------------	---------------------------------------	-------------------------------------	-------------------------------	-----------------------------------	-----



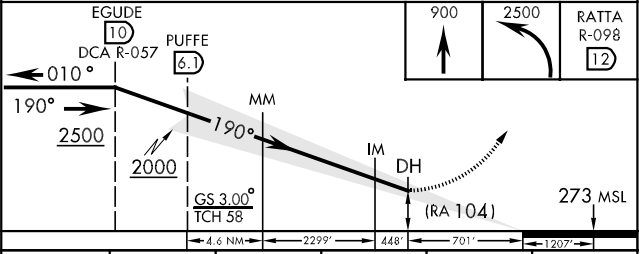
NE-3, 22 OCT 2009 to 19 NOV 2009

NE-3, 22 OCT 2009 to 19 NOV 2009

EMERG SAFE ALT 100 NM 6300 FROM "ADW" VORTAC



## CATEGORY II ILS-SPECIAL AIRCREW & AIRCRAFT CERTIFICATION REQUIRED



CATEGORY	A	B	C	D	E
S-ILS 19R	373/12		100	(RA 104)	

CAMP SPRINGS, MARYLAND 38° 49' N-76° 52' W ANDREWS AFB (KADW)

Orig 09127

# ILS RWY 19R (CAT II)