

RNAV (GPS) RWY 23

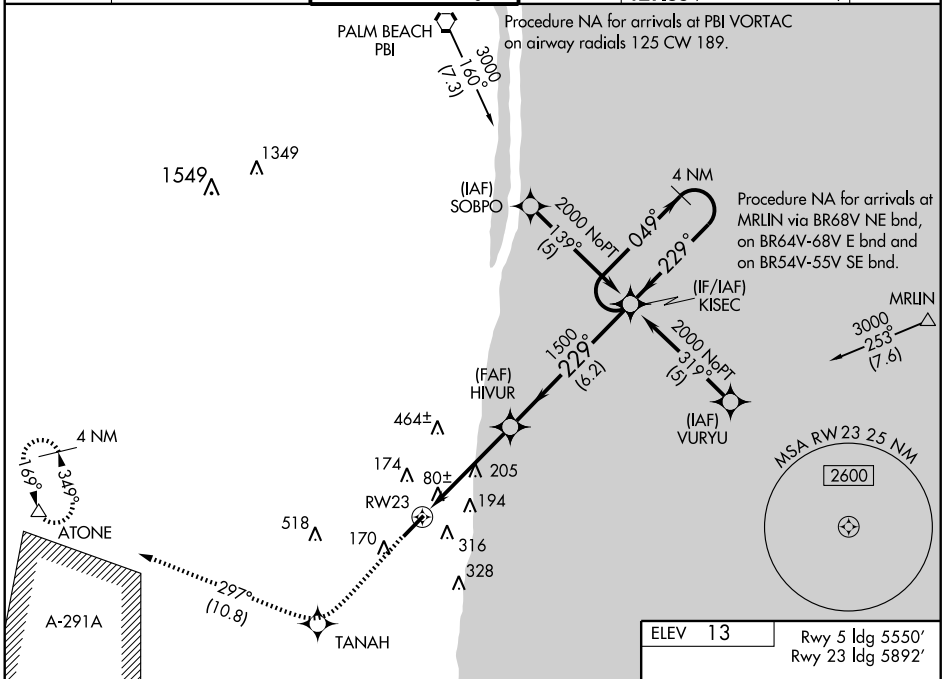
BOCA RATON (BCT)

WAAS CH 42801 W23A	APP CRS 229°	Rwy ldg 5892 TDZE 13 Apt Elev 13
--	------------------------	---

⚠ **NA** DME/DME RNP-0.3 NA. For uncompensated Baro-VNAV systems, LNAV/VNAV NA below -15°C (5°F) or above 48°C (119°F). If local altimeter setting not received, use Palm Beach Intl altimeter setting and increase all DAs 43 feet, and all MDAs 60 feet. Baro-VNAV NA when using Palm Beach Intl altimeter setting. In minimum visibility conditions bright lights on highway ¼ mile north of airport may be mistaken for runway lights. Visibility reduction by helicopters NA.

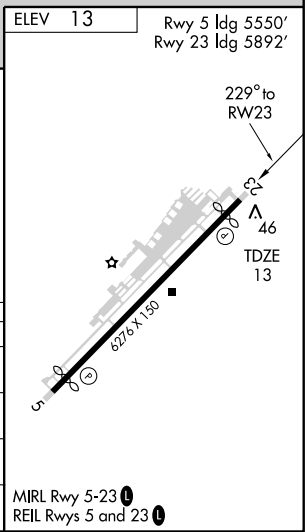
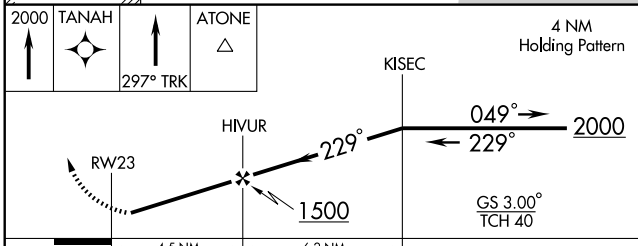
MISSED APPROACH: Climb to 2000 direct TANAH and via 297° track to ATONE and hold.

AWOS-3 121.125	PALM BEACH APP CON 125.2 343.6	BOCA RATON TOWER * 118.425 (CTAF) 0	GND CON 121.8	CLNC DEL 121.8 (when tower closed)	UNICOM 118.425
--------------------------	--	---	-------------------------	---	--------------------------



SE-3, 22 OCT 2009 to 19 NOV 2009

SE-3, 22 OCT 2009 to 19 NOV 2009



CATEGORY	A	B	C	D
LPV DA	263-1		250 (300-1)	
LNAV/ DA VNAV	485-1¾		472 (500-1¾)	
LNAV MDA	580-1	567 (600-1)	580-1½ 567 (600-1½)	580-1¾ 567 (600-1¾)
CIRCLING	620-1	607 (700-1)	620-1¾ 607 (700-1¾)	620-2 607 (700-2)