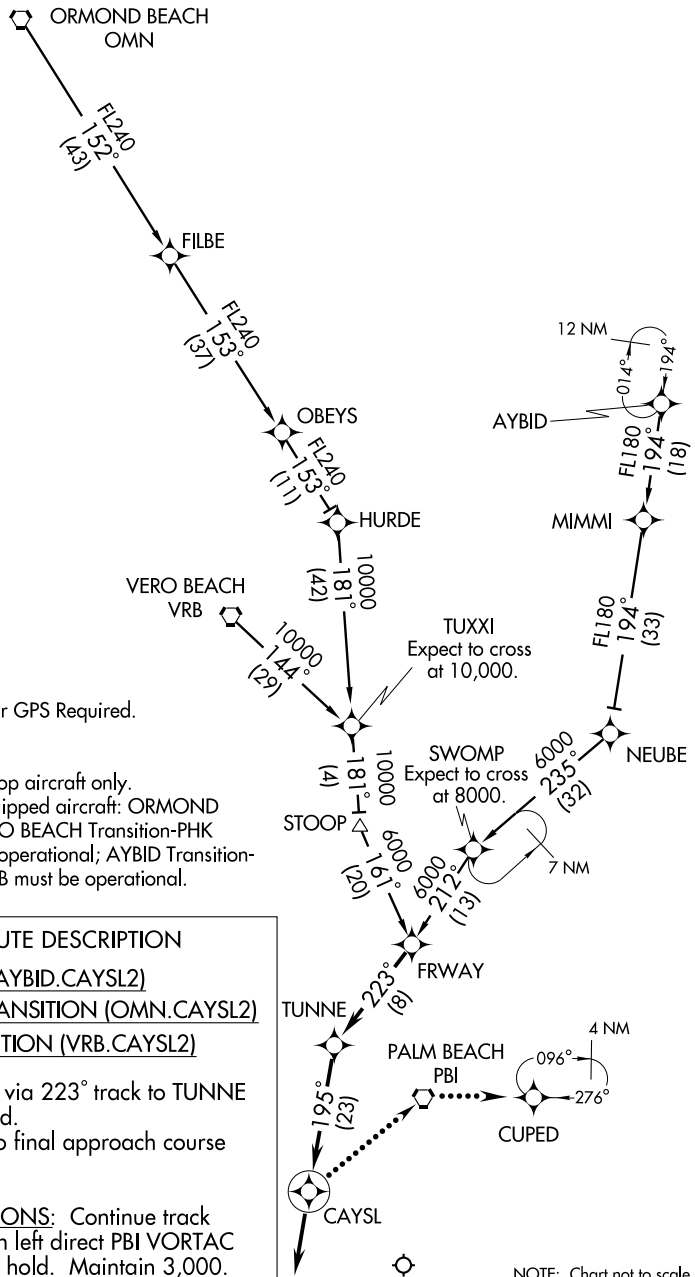


# CAYSL TWO ARRIVAL (RNAV)

PALM BEACH APP CON  
124.6 317.4



- NOTE: DME/DME/IRU or GPS Required.
- NOTE: RNAV 1.
- NOTE: Radar Required.
- NOTE: Turbojet/Turboprop aircraft only.
- NOTE: For Non-GPS equipped aircraft: ORMOND BEACH and VERO BEACH Transition-PHK and PBI must be operational; AYBID Transition-PHK, PBI and VRB must be operational.

## ARRIVAL ROUTE DESCRIPTION

- AYBID TRANSITION (AYBID.CAYSL2)
- ORMOND BEACH TRANSITION (OMN.CAYSL2)
- VERO BEACH TRANSITION (VRB.CAYSL2)

... From FRWAY WP via 223° track to TUNNE WP, thence as depicted.  
Expect radar vectors to final approach course after CAYSL WP.

**LOST COMMUNICATIONS:** Continue track to CAYSL WP then turn left direct PBI VORTAC direct CUPED WP and hold. Maintain 3,000.

NOTE: Chart not to scale.

# CAYSL TWO ARRIVAL (RNAV)

SE-3, 22 OCT 2009 to 19 NOV 2009

SE-3, 22 OCT 2009 to 19 NOV 2009