

VOR RWY 12

VISALIA MUNI (VIS)

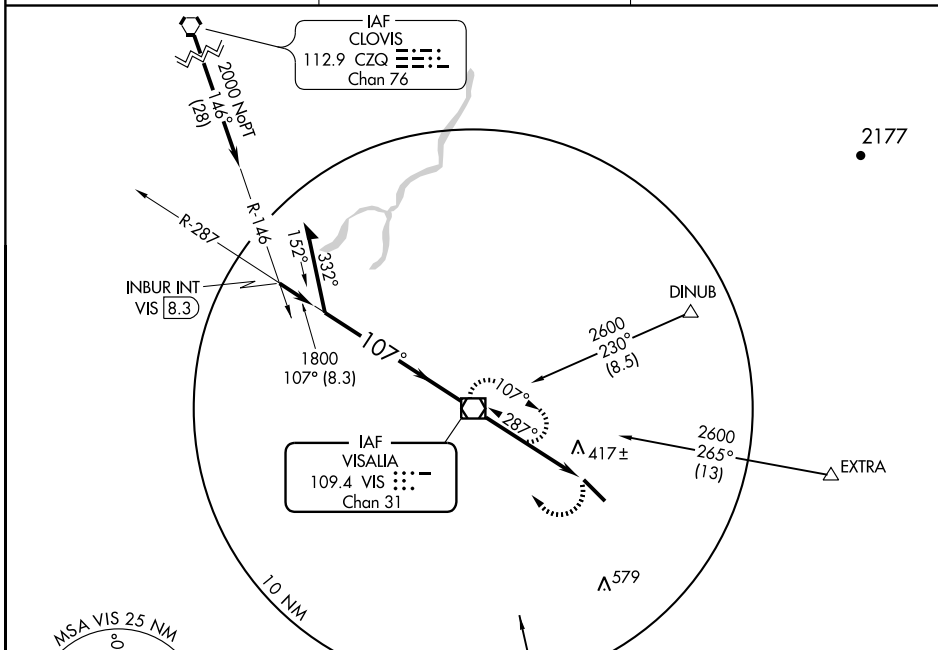
VOR/DME VIS 109.4 Chan 31	APP CRS 107°	Rwy Idg TDZE 294 Apt Elev 295
--	------------------------	---

MISSED APPROACH: Climbing right turn to 2000 direct VIS VOR/DME and hold.

AWOS-3
119.925

FRESNO APP CON
118.5

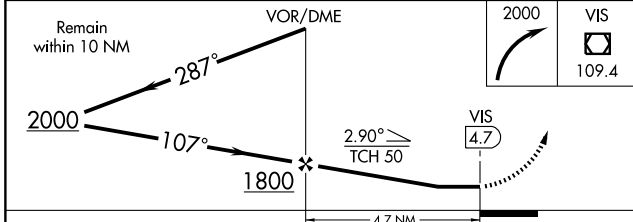
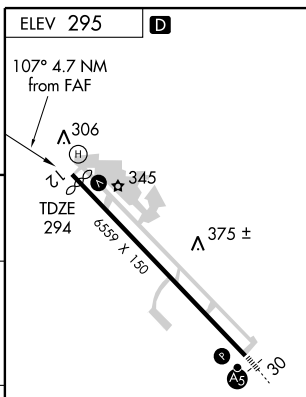
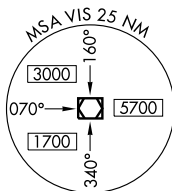
UNICOM
123.05 (CTAF)



2177

SW-2, 22 OCT 2009 to 19 NOV 2009

SW-2, 22 OCT 2009 to 19 NOV 2009



CATEGORY	A	B	C	D
S-12		680-1 386 (400-1)		680-1½ 386 (400-1½)
CIRCLING	720-1 425 (500-1)	760-1 465 (500-1)	760-1½ 465 (500-1½)	860-2 565 (600-2)

REIL Rwy 12				
HIRL Rwy 12-30				
FAF to MAP 4.7 NM				
Knots	60	90	120	150 180
Min:Sec	4:42	3:08	2:21	1:53 1:34