


RNAV (GPS) RWY 30

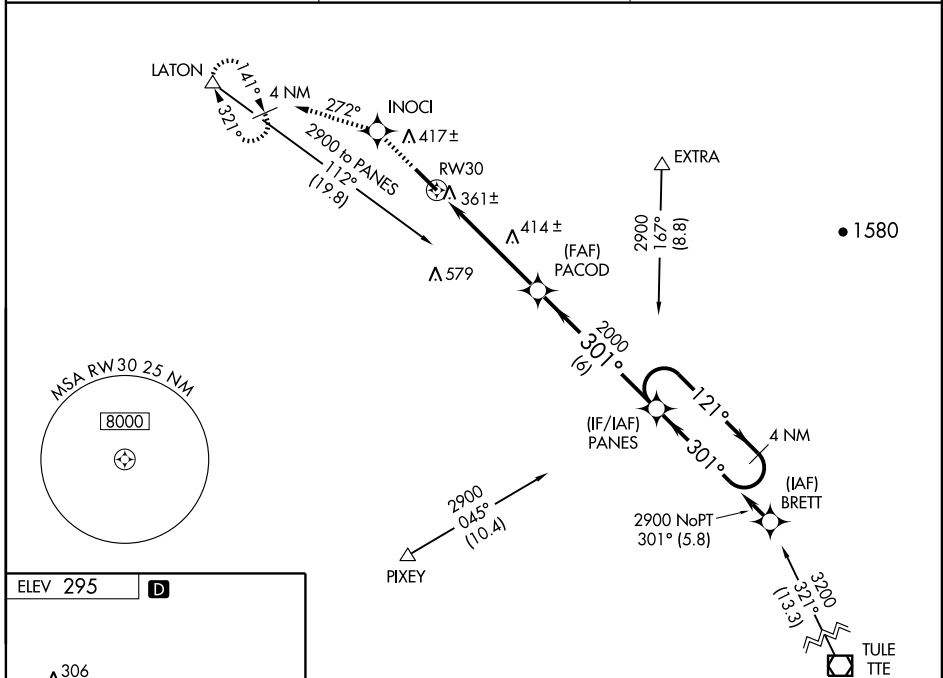
VISALIA MUNI (VIS)

APP CRS	Rwy Idg	5635
301°	TDZE	295
	Apt Elev	295

▼ For uncompensated Baro-VNAV systems, LNAV/VNAV NA below -15°C (5°F) or above 48°C (118°F). DME/DME RNP-0.3 NA.
▲ When local altimeter setting not received, use Hanford altimeter setting and increase all DA/MDA 40 feet and increase LNAV Cat C visibility ¼ mile. Baro-VNAV and VDP NA when using Hanford altimeter setting.
 For inoperative MALSR when using local altimeter and Hanford altimeter setting, increase LNAV Cat D visibility to 1 ¼ mile.

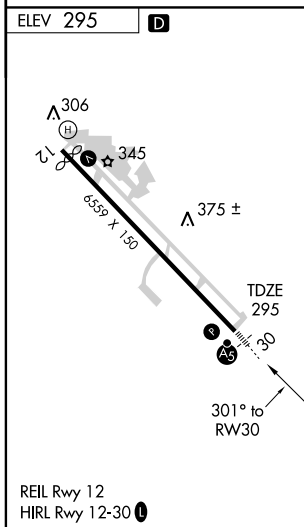
MALSR

MISSED APPROACH: Climb to 3000 direct INOCI and via 272° track to LATON and hold, continue climb-in-hold to 3000.

AWOS-3 119.925	FRESNO APP CON 118.5	UNICOM 123.05 (CTAF) 0
--------------------------	--------------------------------	----------------------------------



SW-2, 22 OCT 2009 to 19 NOV 2009

SW-2, 22 OCT 2009 to 19 NOV 2009



3000	INOCI	272° track	LATON	PANES	4 NM Holding Pattern
*LNAV only		PACOD		121° → 2900	
*1.1 NM to RW30		301°		← 301°	
RW30		2000		GS 3.00° TCH 53	
1.1		4 NM		6 NM	
CATEGORY	A	B	C	D	
LNAV/VNAV DA	626-¾			331 (400-¾)	
LNAV MDA	680-½		385 (400-½)		680-1 385 (400-1)
CIRCLING	720-1 425 (500-1)	760-1 465 (500-1)	760-1½ 465 (500-1½)	860-2 565 (600-2)	