

# RNAV (GPS) RWY 12

VISALIA MUNI (VIS)

APP CRS	Rwy Idg	<b>5635</b>
<b>129°</b>	TDZE	<b>294</b>
	Apt Elev	<b>295</b>

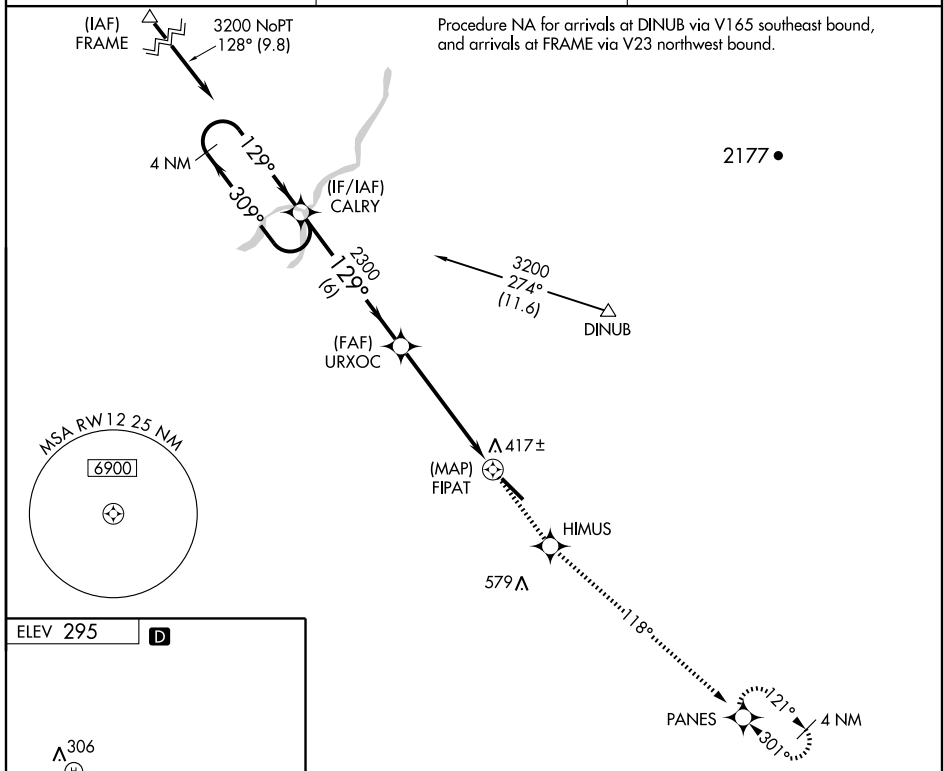
**⚠** DME/DME RNP-0.3 NA.  
**⚠** Visibility reduction by helicopters NA.  
 When local altimeter setting not received, use Hanford altimeter setting and increase all MDA 40 feet and increase LNAV Cat C visibility ¼ mile.

**MISSED APPROACH:** Climb to 2900 direct HIMUS and via 118° track to PANES and hold.

AWOS-3  
**119.925**

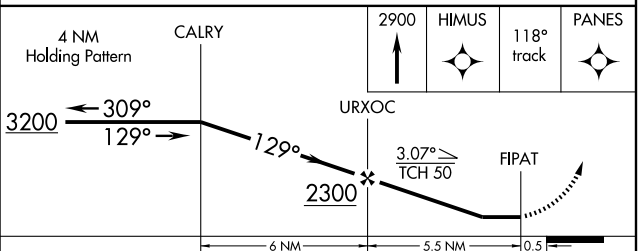
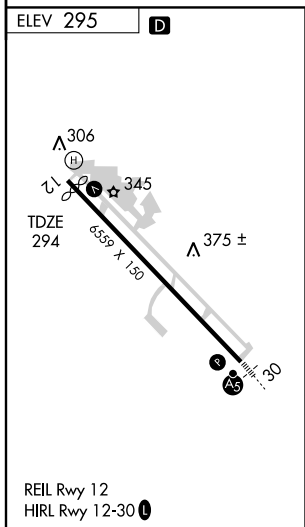
FRESNO APP CON  
**118.5**

UNICOM  
**123.05 (CTAF) 0**



SW-2, 22 OCT 2009 to 19 NOV 2009

SW-2, 22 OCT 2009 to 19 NOV 2009



CATEGORY	A	B	C	D
LNAV MDA	680-1 386 (400-1)			680-1¼ 386 (400-1¼)
CIRCLING	720-1 425 (500-1)	760-1 465 (500-1)	760-1½ 465 (500-1½)	860-2 565 (600-2)