


ILS or LOC/DME RWY 30

VISALIA MUNI (VIS)

LOC I-VIS 108.5	APP CRS 301°	Rwy Idg TDZE Apt Elev	5635 295 295
---------------------------	------------------------	-----------------------------	---

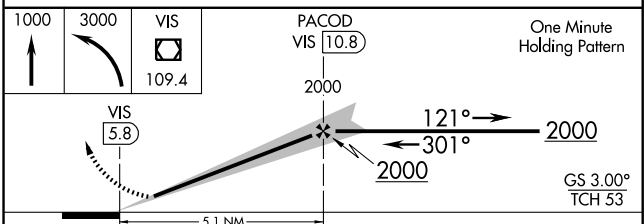
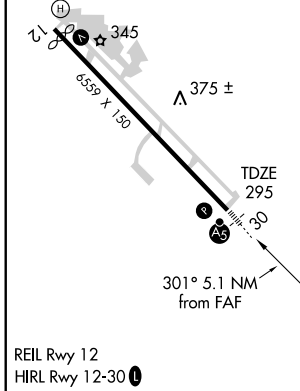
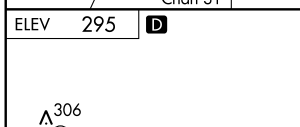
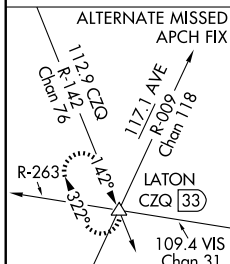
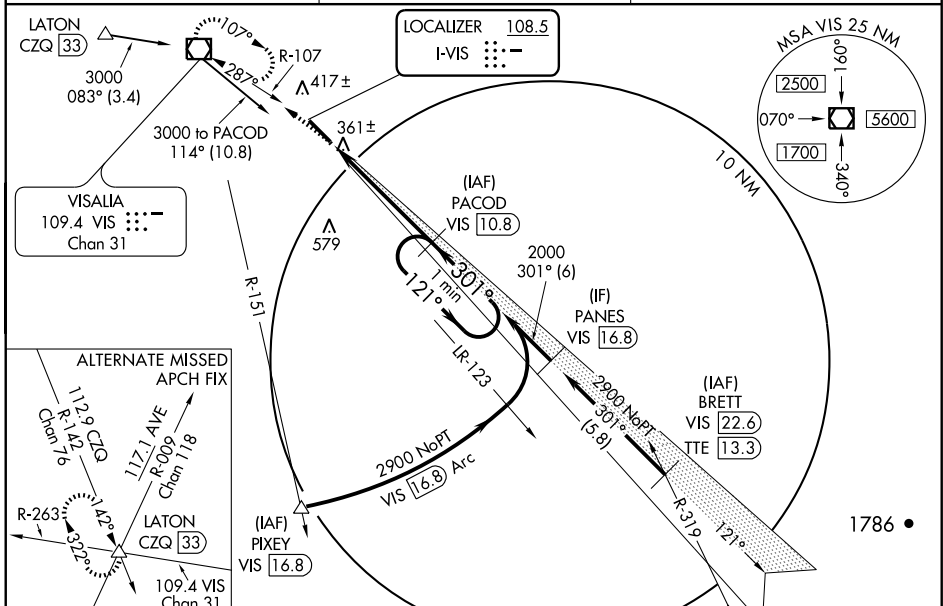
⚠ When local altimeter setting not received, use Hanford altimeter setting and increase all DA/MDA 40 feet.
⚠ For inoperative MALS/R, increase local altimeter setting S-LOC Cat D visibility to 1 mile.
 DME from VIS VOR/DME. Simultaneous reception of I-VIS and VIS DME required.

MALS/R

MISSED APPROACH: Climb to 1000 then climbing left turn to 3000 direct VIS VOR/DME and hold, continue climb-in-hold to 3000.

AWOS-3
119.925

FRESNO APP CON
118.5

UNICOM
123.05 (CTAF)



CATEGORY	A	B	C	D
S-ILS 30	495-½ 200 (200-½)			
S-LOC 30	620-½	325 (400-½)	620-¾ 325 (400-¾)	
CIRCLING	720-1 425 (500-1)	760-1 465 (500-1)	760-1½ 465 (500-1½)	860-2 565 (600-2)

SW-2, 22 OCT 2009 to 19 NOV 2009

SW-2, 22 OCT 2009 to 19 NOV 2009