

VOR/DME CIC 109.8 Chan 35	APP CRS 327°	Rwy Idg TDZE Apt Elev 6724 224 238
---	------------------------	--

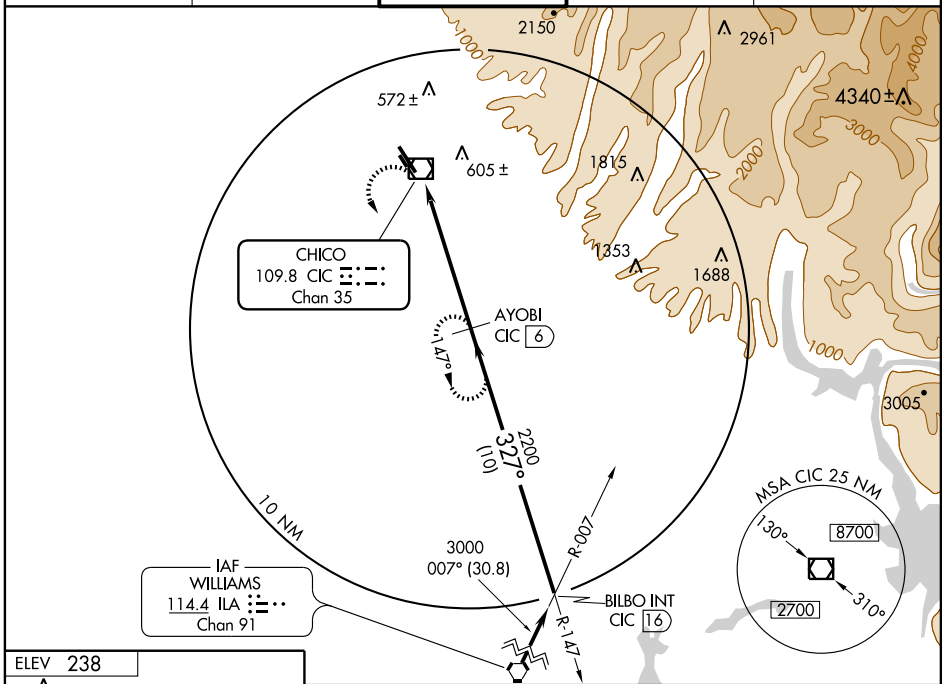
VOR/DME RWY 31R

CHICO MUNI (CIC)

⚠ Circling not authorized east of Rwy 13L-31R.
⚠ When control tower closed, except for operators with approved weather reporting service, use Red Bluff altimeter setting.

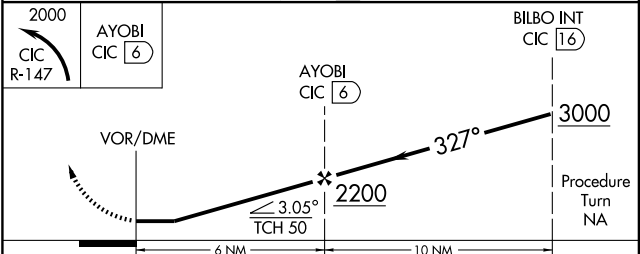
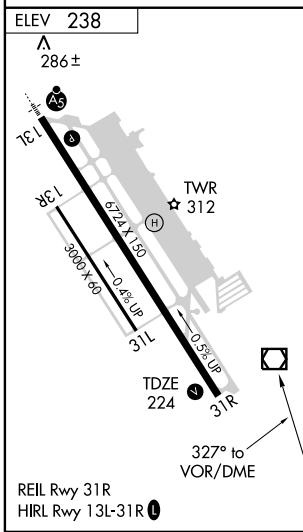
MISSED APPROACH: Climbing left turn to 2000 via CIC R-147 to AYOB/6 DME and hold.

AWOS-3 119.675	OAKLAND CENTER 132.2 350.3	CHICO TOWER★ 121.0 (CTAF) 239.3	GND CON 121.9	UNICOM 122.95
--------------------------	--------------------------------------	--	-------------------------	-------------------------



SW-2, 22 OCT 2009 to 19 NOV 2009

SW-2, 22 OCT 2009 to 19 NOV 2009



CATEGORY	A	B	C	D
S-31R	760-1	536 (600-1)	760-1½ 536 (600-1½)	760-1¾ 536 (600-1¾)
CIRCLING	760-1	522 (600-1)	760-1½ 522 (600-1½)	800-2 562 (600-2)
RED BLUFF ALTIMETER SETTING MINIMUMS				
S-31R	840-1	616 (700-1)	840-1¾ 616 (700-1¾)	840-2 616 (700-2)
CIRCLING	840-1	602 (700-1)	840-1¾ 602 (700-1¾)	840-2 602 (700-2)