

CHICO, CALIFORNIA


AL-557 (FAA)

# VOR/DME RWY 13L

CHICO MUNI (CIC)

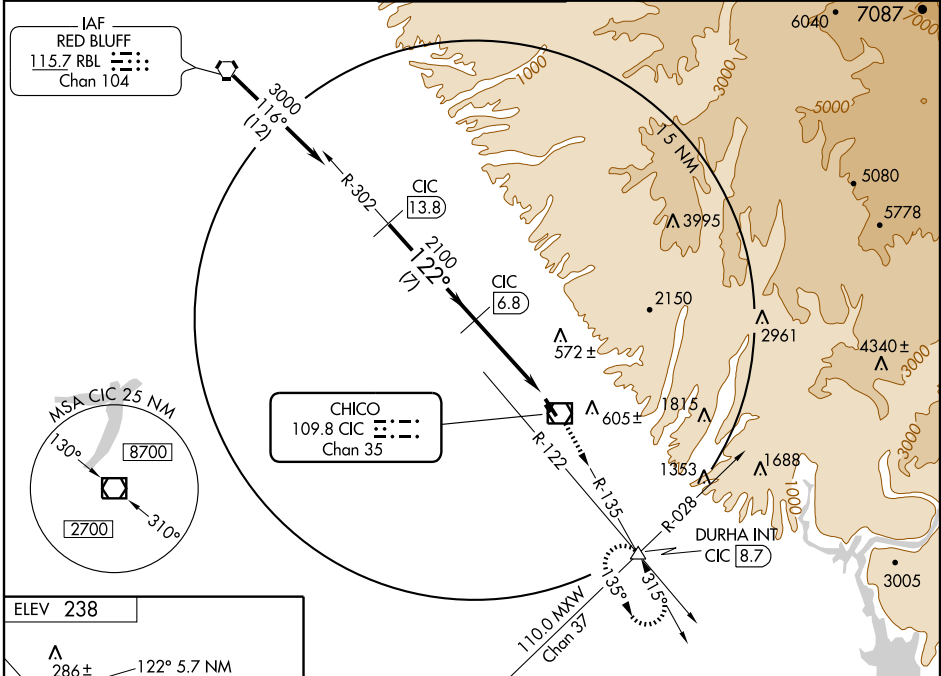
VOR/DME CIC	APP CRS	Rwy Idg	<b>6724</b>
<b>109.8</b>	<b>122°</b>	TDZE	<b>238</b>
Chan <b>35</b>		Apt Elev	<b>238</b>

**⚠** Circling not authorized east of Rwy 13L-31R.  
**⚠** When control tower closed, except for operators with approved weather reporting service, use Red Bluff altimeter setting.  
 Local altimeter setting minimums: for inoperative MALSR, increase S-13L Cat. D visibility to 1/4.  
 VDP NA when using Red Bluff altimeter setting.

MALSR 

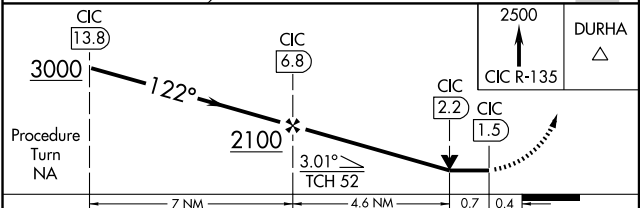
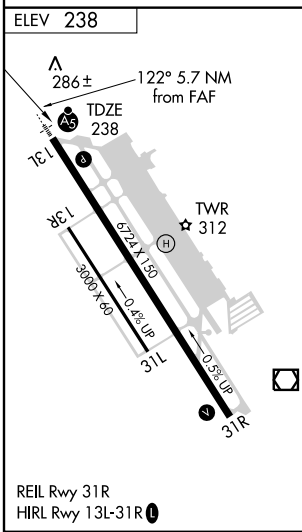
MISSED APPROACH: Climb to 2500 via CIC R-135 to DURHA INT/CIC 8.7 DME and hold.

AWOS-3 <b>119.675</b>	OAKLAND CENTER <b>132.2 350.3</b>	CHICO TOWER* <b>121.0 (CTAF) 239.3</b>	GND CON <b>121.9</b>	UNICOM <b>122.95</b>
--------------------------	--------------------------------------	---	-------------------------	-------------------------



SW-2, 22 OCT 2009 to 19 NOV 2009

SW-2, 22 OCT 2009 to 19 NOV 2009



CATEGORY	A	B	C	D
S-13L	640-1/2	402 (500-1/2)	640-3/4 402 (500-3/4)	640-1 402 (500-1)
CIRCLING	640-1 402 (500-1)	700-1 462 (500-1)	700-1 1/2 462 (500-1 1/2)	800-2 562 (600-2)
RED BLUFF ALTIMETER SETTING MINIMUMS				
S-13L	780-1/2	542 (600-1/2)	780-1 542 (600-1)	780-1 1/4 542 (600-1 1/4)
CIRCLING	780-1	542 (600-1)	780-1 1/2 542 (600-1 1/2)	800-2 562 (600-2)

CHICO, CALIFORNIA  
 Amdt 7C 09183

39°48'N-121°52'W

# VOR/DME RWY 13L

CHICO MUNI (CIC)