

CHICO, CALIFORNIA

AL-557 (FAA)

RNAV (GPS) RWY 31R

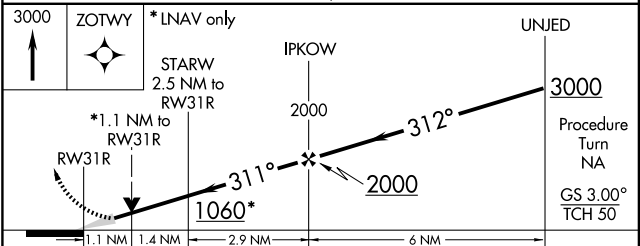
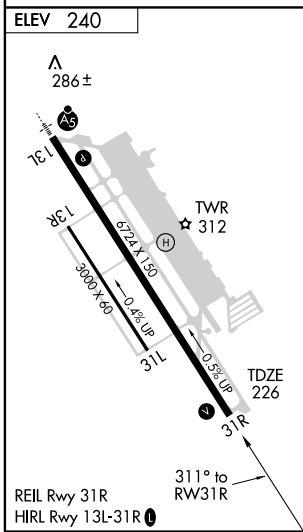
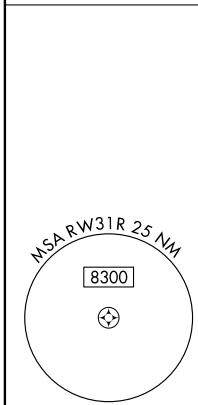
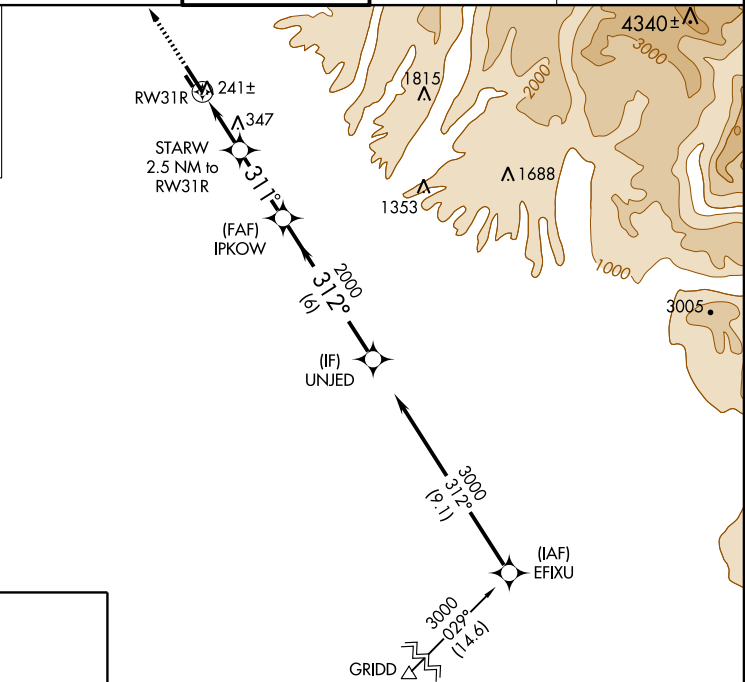
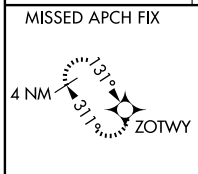
CHICO MUNI (CIC)

WAAS CH 77912 W31A	APP CRS 311°	Rwy Idg TDZE 226 Apt Elev 240	6724
---------------------------------	------------------------	---	-------------

NA Circling NA east of Rwy 13L/31R. Baro-VNAV NA when using Red Bluff altimeter setting. For uncompensated Baro-VNAV systems, LNAV/VNAV NA below -15°C (5°F) or above 48°C (118°F). DME/DME RNP-0.3 NA. When local altimeter setting not received, use Red Bluff altimeter setting and increase all DA 81 feet and MDA 100 feet and increase LPV visibility all Cats ¼ mile, visibility LNAV/VNAV all Cats ½ mile and visibility LNAV Cats C/D ¼ mile. VDP NA when using Red Bluff altimeter setting.

MISSED APPROACH: Climb to 3000 direct ZOTWY and hold.

AWOS-3 119.675	OAKLAND CENTER 132.2 350.3	CHICO TOWER* 121.0 (CTAF) 239.3	GND CON 121.9	UNICOM 122.95
--------------------------	--------------------------------------	--	-------------------------	-------------------------



CATEGORY	A	B	C	D
LPV DA	476-1	250 (300-1)		
LNAV/VNAV DA	733-1¾ 507 (500-1¾)			
LNAV MDA	600-1	374 (400-1)		600-1¼ 374 (400-1¼)
CIRCLING	640-1 400 (400-1)	700-1 460 (500-1)	700-1½ 460 (500-1½)	800-2 560 (600-2)

CHICO, CALIFORNIA
Orig 09183

39°48'N-121°52'W

RNAV (GPS) RWY 31R

SW-2, 22 OCT 2009 to 19 NOV 2009

SW-2, 22 OCT 2009 to 19 NOV 2009