

RNAV (GPS) RWY 13L

CHICO MUNI (CIC)

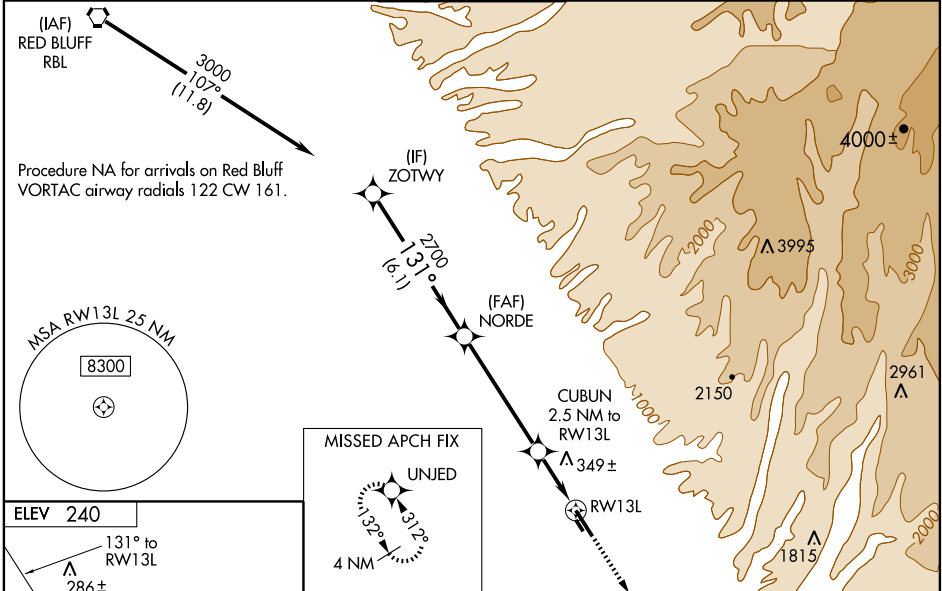
WAAS CH 65912 W13A	APP CRS 131°	Rwy Idg TDZE Apt Elev	6724 240 240
--	------------------------	-----------------------------	---

▼ Inoperative table does not apply to LPV and LNAV Cats A/B/C.
▲ NA For inoperative MALS, increase LNAV Cat D visibility to 1/4.
 Circling NA east of Rwy 13L/31R. Baro-VNAV NA when using Red Bluff altimeter setting. For uncompensated Baro-VNAV systems, LNAV/VNAV NA below -15°C (5°F) or above 49°C (120°F). DME/DME RNP-0.3 NA. Visibility reduction by helicopters NA. When local altimeter setting not received, use Red Bluff Muni altimeter setting and increase all DA 81 feet, and all MDA 100 feet, increase LNAV/VNAV all Cats visibility 1/4 mile. For inoperative MALS when using Red Bluff altimeter setting, LNAV Cats A/B inoperative table does not apply, increase Cat C visibility 1/4 mile.



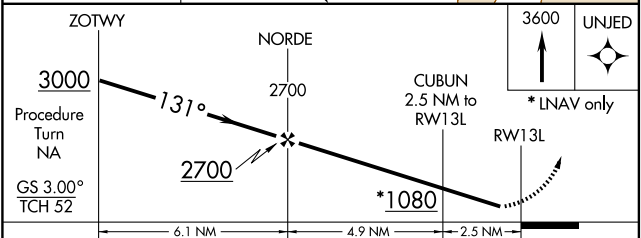
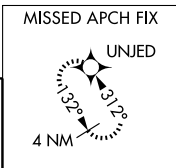
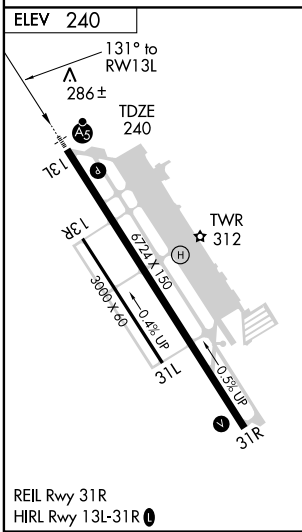
MISSED APPROACH: Climb to 3600 direct UNJED and hold, continue climb-in-hold to 3600.

AWOS-3 119.675	OAKLAND CENTER 132.2 350.3	CHICO TOWER* 121.0 (CTAF) 0 239.3	GND CON 121.9	UNICOM 122.95
--------------------------	--------------------------------------	---	-------------------------	-------------------------



SW-2, 22 OCT 2009 to 19 NOV 2009

SW-2, 22 OCT 2009 to 19 NOV 2009



CATEGORY	A	B	C	D
LPV DA		536-1	296 (300-1)	
LNAV/VNAV DA		648-1	408 (500-1)	
LNAV MDA		600-1	360 (400-1)	
CIRCLING	640-1 400 (500-1)	700-1 460 (500-1)	700-1½ 460 (500-1½)	800-2 560 (600-2)