

# ILS or LOC/DME RWY 13L

CHICO MUNI (CIC)

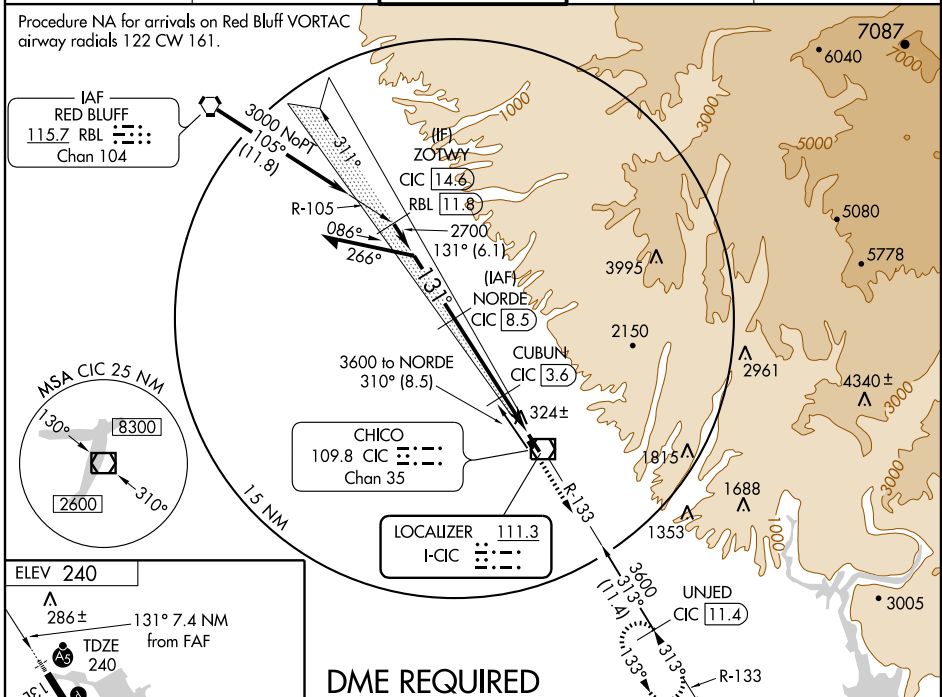
LOC I-CIC	APP CRS	Rwy Idg	6724
<b>111.3</b>	<b>131°</b>	TDZE	240
		Apt Elev	240

**NA** Circling NA east of Rwy 13L/31R. DME from CIC VOR/DME. Simultaneous reception of I-CIC and CIC DME required. Visibility reduction by helicopters NA. When local altimeter setting not received, use Red Bluff Muni altimeter setting and increase all DA 81 feet and all MDA 100 feet. Inoperative table does not apply when using Chico Muni altimeter setting. For inoperative MALSR, when using Red Bluff Muni altimeter setting S-LOC R13L Cat A/B inoperative table does not apply, for Cat C increase visibility ¼ mile.

**MALSR**

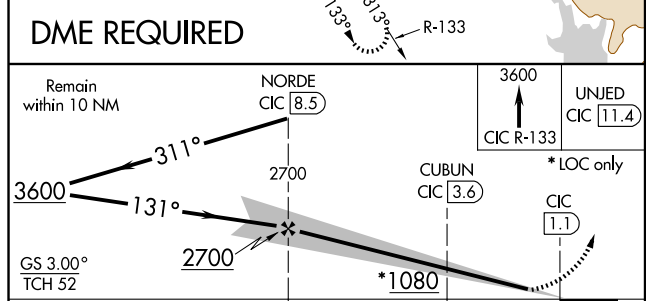
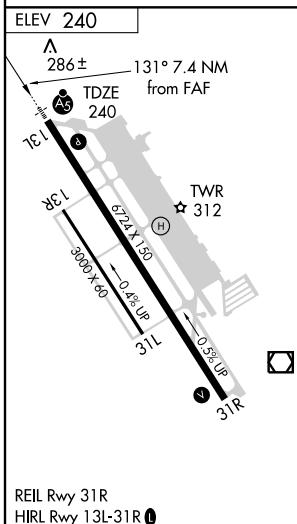
**MISSED APPROACH:** Climb to 3600 via CIC VOR/DME R-133 to UNJED/CIC 11.4 DME and hold, continue climb-in-hold.

AWOS-3	OAKLAND CENTER	CHICO TOWER *	GND CON	UNICOM
<b>119.675</b>	<b>132.2 350.3</b>	<b>121.0 (CTAF) 0 239.3</b>	<b>121.9</b>	<b>122.95</b>



SW-2, 22 OCT 2009 to 19 NOV 2009

SW-2, 22 OCT 2009 to 19 NOV 2009



CATEGORY	A	B	C	D
S-ILS 13L		490-1	250 (300-1)	
S-LOC 13L		580-1	340 (400-1)	
CIRCLING	640-1 400 (400-1)	700-1 460 (500-1)	700-1½ 460 (500-1½)	800-2 560 (600-2)