

RNAV (GPS) Z RWY 35L

AUSTIN-BERGSTROM INTL (AUS)

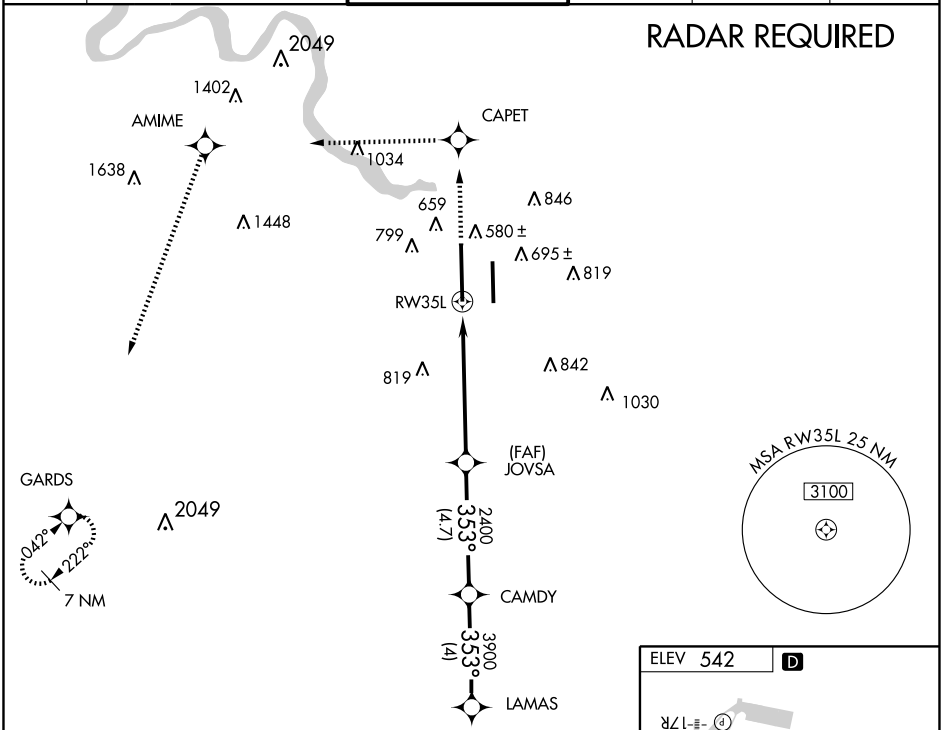
APP CRS	Rwy Idg	12248
353°	TDZE	496
	Apt Elev	542

▼ Baro-VNAV NA Below -16°C (4°F).
▲NA GPS or RNP-0.3 REQUIRED. DME/DME RNP-0.3 NA.
 For inoperative MALS, increase LNAV/VNAV
 Cat E visibility to 1½ and LNAV Cat E visibility to 2¼.



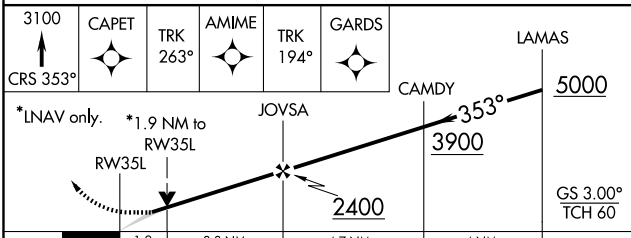
MISSED APPROACH: Climb to 3100 via 353° course to CAPET then via 263° track to AMIME then via 194° track to GARDS and hold.

ATIS	AUSTIN APP CON	AUSTIN TOWER	GND CON	CLNC DEL	UNICOM
124.4	127.225 317.65 (355°-175°) 119.0 370.85 (176°-354°)	121.0 281.5	121.9 348.6	125.5 263.0	122.95



SC-3, 22 OCT 2009 to 19 NOV 2009

SC-3, 22 OCT 2009 to 19 NOV 2009



CATEGORY	A	B	C	D	E
GLS PA DA	NA				
LNAV/VNAV DA	900/50		404 (400-1)		
LNAV MDA	1140/24	644 (700-½)	1140/60 644 (700-¼)	1140-1½ 644 (700-1½)	1140-1¾ 644 (700-1¾)
CIRCLING	1140-1½	598 (600-1½)	1140-1¾ 598 (600-1¾)	1160-2 618 (700-2)	1260-2½ 718 (800-2½)

