

RNAV (GPS) RWY 35R

AUSTIN-BERGSTROM INTL (AUS)

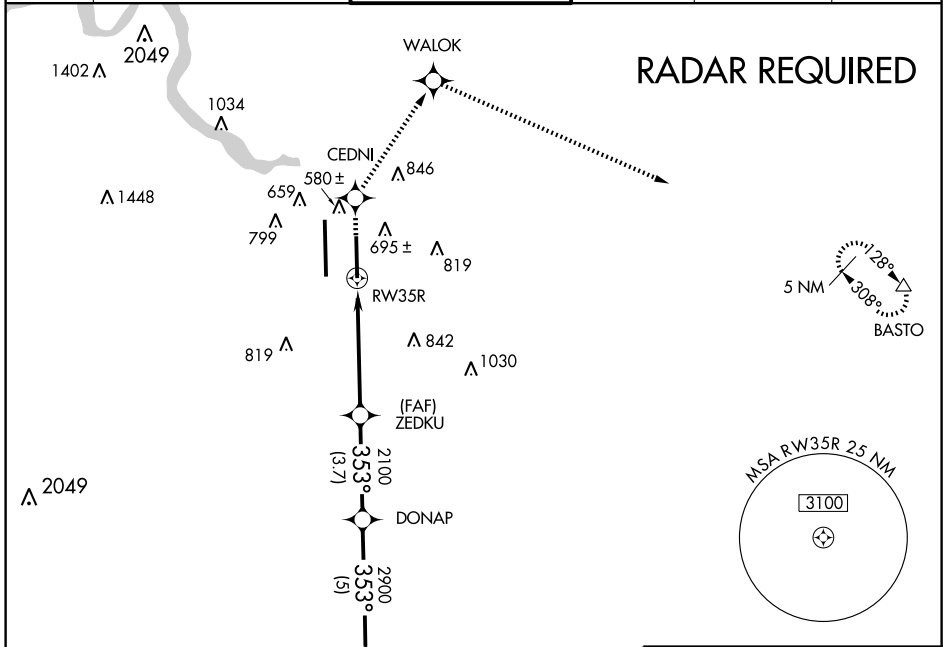
APP CRS 353°	Rwy Idg 9000
	TDZE 480
	Apt Elev 542

▼ Baro-VNAV NA below -1.5°C (5°F).
GPS or RNP-0.3 REQUIRED. DME/DME RNP-0.3 NA.
▲ NA For inoperative MALS, increase LNAV/VNAV
Cat E visibility to 1½ and LNAV Cat E visibility to 1¾.



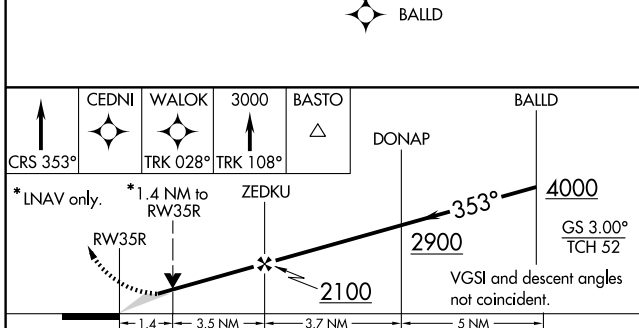
MISSED APPROACH: Climb via 353° course to CEDNI then via 028° to track to WALOK then via 108° track to 3000 to BASTO and hold.

ATIS 124.4	AUSTIN APP CON 127.225 317.65 (355°-175°) 119.0 370.85 (176°-354°)	AUSTIN TOWER 121.0 281.5	GND CON 121.9 348.6	CLNC DEL 125.5 263.0	UNICOM 122.95
----------------------	--	------------------------------------	-------------------------------	--------------------------------	-------------------------



SC-3, 22 OCT 2009 to 19 NOV 2009

SC-3, 22 OCT 2009 to 19 NOV 2009



↑	CEDNI	WALOK	3000	BASTO	BALLD
CRS 353°					
	TRK 028°	TRK 108°			
*LNAV only.	*1.4 NM to RW35R	ZEDKU			
	1.4	3.5	3.7	5	
CATEGORY	A	B	C	D	E
GLS PA DA	NA				
LNAV/VNAV DA	880/50 400 (400-1)				
LNAV MDA	980/24	500 (500-½)	980/40 500 (500-¾)	980/50 500 (500-1)	980/60 500 (500-1½)
CIRCLING	1040-1½ 498 (500-1½)		1160-2 618 (700-2)		1260-2½ 718 (800-2½)

