

RNAV (GPS) RWY 17R

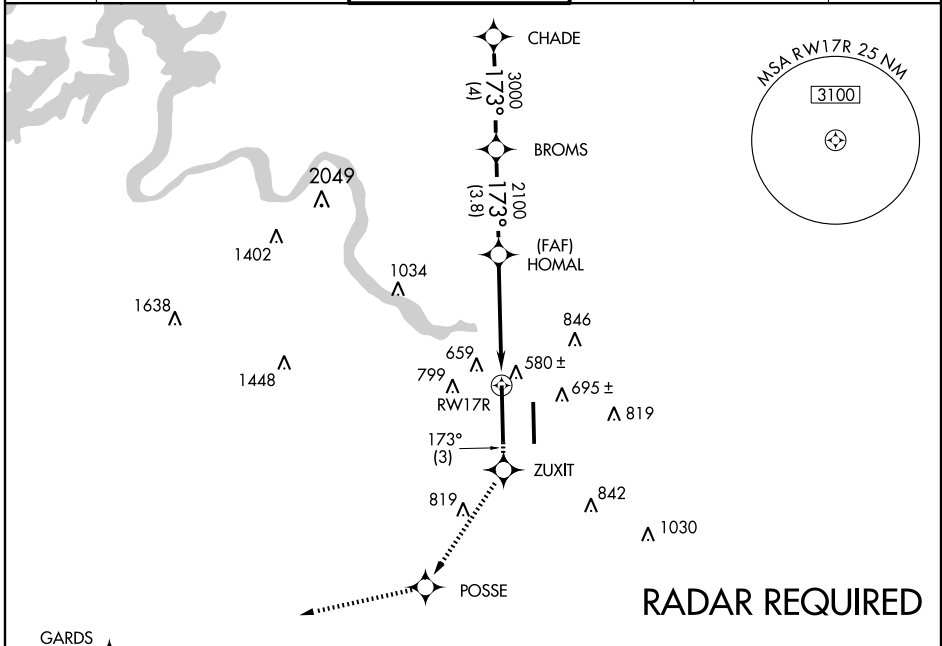
AUSTIN-BERGSTROM INTL (AUS)

APP CRS	Rwy Idg	12248
173°	TDZE	542
	Apt Elev	542

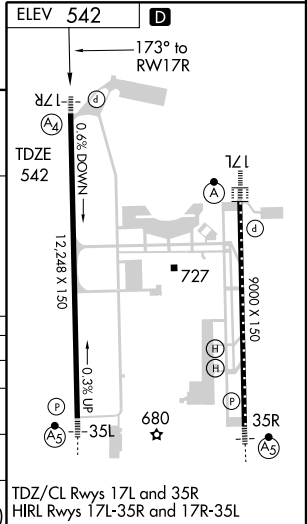
NA Baro-VNAV NA below -16°C (4°F).
 GPS or RNP-0.3 REQUIRED DME/DME RNP-0.3 NA.
 Inoperative table does not apply to LNAV/VNAV.
 For inoperative MALS, increase LNAV Cat E visibility to ½.

MALS MISSED APPROACH: Climb to 3100 via 173° course to ZUXIT, then via 208° track to POSSE, then via 251° track to GARDS and hold.

ATIS	AUSTIN APP CON	AUSTIN TOWER	GND CON	CLNC DEL	UNICOM
124.4	127.225 317.65 (355°-175°) 119.0 370.85 (176°-354°)	121.0 281.5	121.9 348.6	125.5 263.0	122.95



CHADE	3100	ZUXIT	TRK 208°	POSSE	TRK 251°	GARDS
4000	↑ CRS 173°					
173°		HOMAL	*1.1 NM to RWY 17R		*LNAV only.	
3000				RWY 17R		
2100						
4 NM	3.8 NM	3.5 NM	1.1 NM			
CATEGORY	A	B	C	D	E	
GLS PA DA	NA					
LNAV/VNAV DA	920/60		378 (400-1¼)			
LNAV MDA	940/40		398 (400-¾)		940/60 398 (400-1¼)	
CIRCLING	1040-1¼ 498 (500-1¼)		1040-1½ 498 (500-1½)		1160-2 618 (700-2) 1260-2½ 718 (800-2½)	



SC-3, 22 OCT 2009 to 19 NOV 2009

SC-3, 22 OCT 2009 to 19 NOV 2009