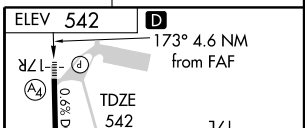
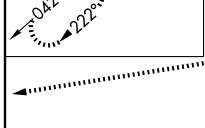
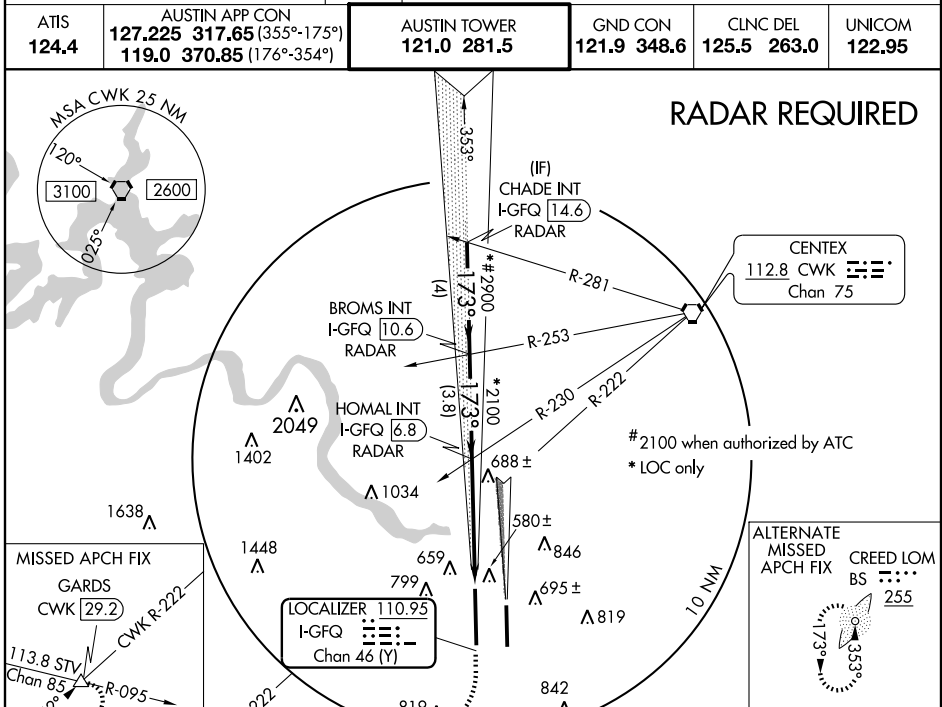


ILS or LOC RWY 17R

AUSTIN-BERGSTROM INTL (AUS)

LOC/DME I-GFQ 110.95 Chan 46 (Y)	APP CRS 173°	Rwy Idg 12248 TDZE 542 Apt Elev 542
--	------------------------	--

<p>▽ Simultaneous approach authorized with Rwy 17L.</p> <p>▲ MAL S 4 2 1 0</p>	<p>MISSED APPROACH: Climb to 1000, then climbing right turn to 3100 via CWK VORTAC R-222 to GARDS Int/CWK 29.2 DME and hold.</p>				
	<p>ATIS 124.4</p>	<p>AUSTIN APP CON 127.225 317.65 (355°-175°) 119.0 370.85 (176°-354°)</p>	<p>AUSTIN TOWER 121.0 281.5</p>	<p>GND CON 121.9 348.6</p>	<p>CLNC DEL 125.5 263.0</p>



CHADE INT I-GFQ 14.6 RADAR	BROMS INT I-GFQ 10.6 RADAR	HOMAL INT I-GFQ 6.8 RADAR	1000	3100	GARDS CWK 29.2
#4000	#3400	*#2900	I-GFQ 3.3	I-GFQ 2.2	*LOC only
GS 3.00° TCH 59	#2100 when authorized by ATC.	*2100			
4 NM		3.8 NM	3.5 NM	1.1	

CATEGORY	A	B	C	D	E
S-ILS 17R	742/40 200 (200-¾)				
S-LOC 17R	940/40	398 (400-¾)	940/60	940-1½	398 (400-1½)
CIRCLING	1040-1	498 (500-1)	1040-1½	1160-2	1260-2½
	498 (500-1½)		618 (700-2)	718 (800-2½)	

TDZ/CL Rwy 17L and 35R
HIRL Rwy 17L-35R and 17R-35L
FAF to MAP 4.6 NM

Knots	60	90	120	150	180
Min:Sec	4:36	3:04	2:18	1:50	1:32

SC-3, 22 OCT 2009 to 19 NOV 2009

SC-3, 22 OCT 2009 to 19 NOV 2009