

LOC I-HCE 110.5 Chan 42	APP CRS 353°	Rwy Idg TDZE 480 Apt Elev 542	9000
---	------------------------	---	-------------

ILS RWY 35R

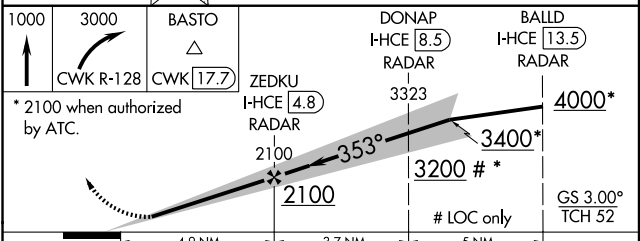
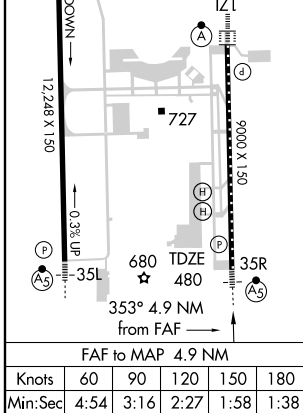
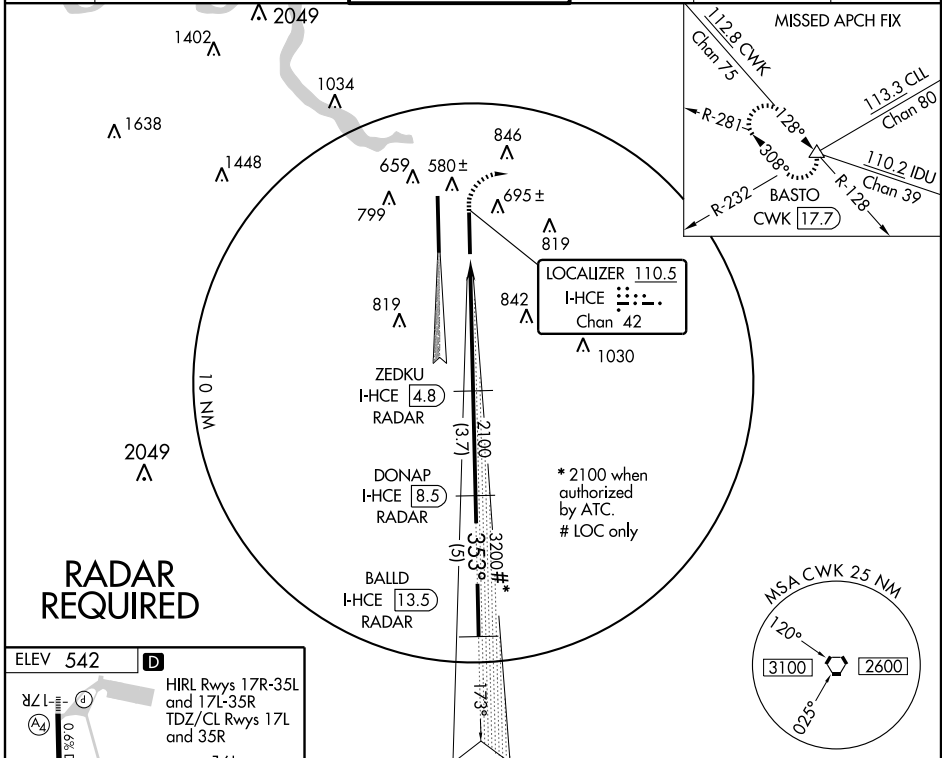
AUSTIN-BERGSTROM INTL (AUS)

Simultaneous approach authorized with Rwy 35L.
 For inoperative MALSR, increase S-ILS Cat E visibility to RVR 4000, and S-LOC Cat E visibility to 1/4 miles.

MALSR

MISSED APPROACH: Climb to 1000 then climbing right turn to 3000 via CWK VORTAC R-128 to BASTO INT/CWK 17.7 DME and hold.

ATIS 124.4	AUSTIN APP CON 127.225 317.65 (355°-175°) 119.0 370.85 (176°-354°)	AUSTIN TOWER 121.0 281.5	GND CON 121.9 348.6	CLNC DEL 125.5 263.0	UNICOM 122.95
----------------------	--	------------------------------------	-------------------------------	--------------------------------	-------------------------



CATEGORY	A	B	C	D	E
S-ILS 35R	680/18 200 (200-1/2)				
S-LOC 35R	980/24	500 (500-1/2)	980/40 500 (500-3/4)	980/50 500 (500-1)	980/60 500 (500-1 1/4)
CIRCLING	1040-1	498 (500-1)	1040-1 1/2 498 (500-1 1/2)	1160-2 618 (700-2)	1260-2 1/2 718 (800-2 1/2)

SC-3, 22 OCT 2009 to 19 NOV 2009

SC-3, 22 OCT 2009 to 19 NOV 2009