

LOC I-VNKG 110.5 Chan 42	APP CRS 173°	Rwy Idg TDZE Apt Elev	9000 492 542
---------------------------------------	------------------------	-----------------------------	---

ILS RWY 17L (CAT III)
AUSTIN-BERGSTROM INTL (AUS)

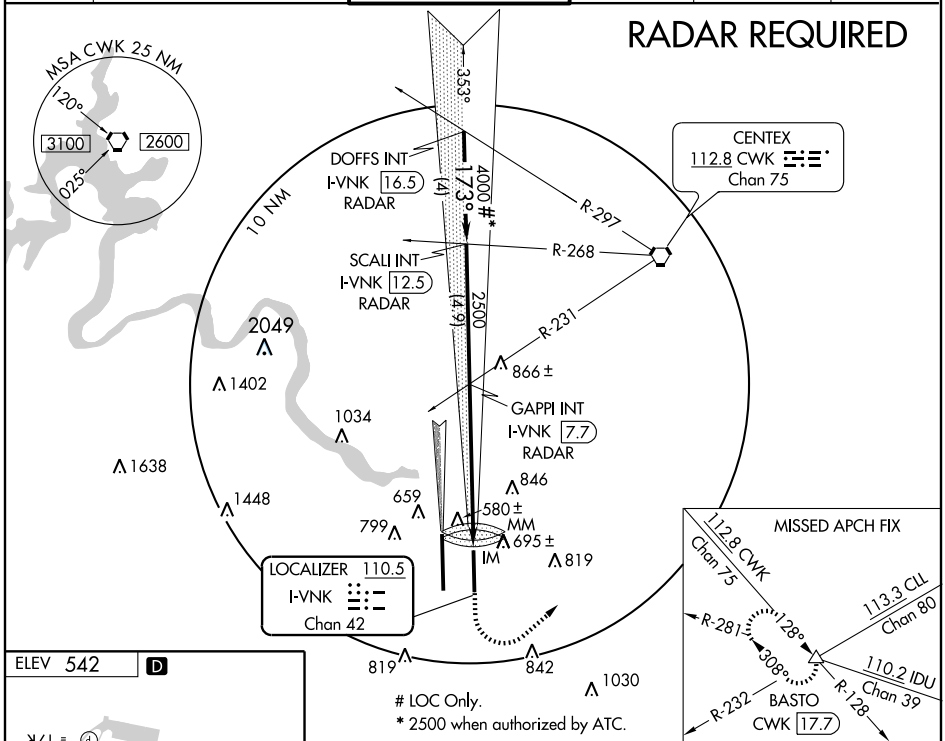
Simultaneous approach authorized with Rwy 17R.
For inoperative ALSF, increase S-ILS Cat E visibility to RVR 4000 and S-LOC Cat E visibility to 1/2.

ALSF-2

MISSED APPROACH: Climb to 1000, then climbing left turn to 3000 via CWK VORTAC R-128 to BASTO INT/CWK 17.7 DME and hold.

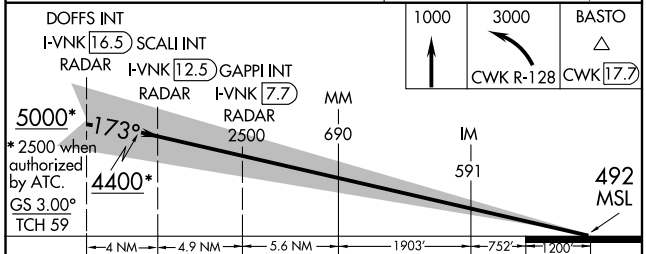
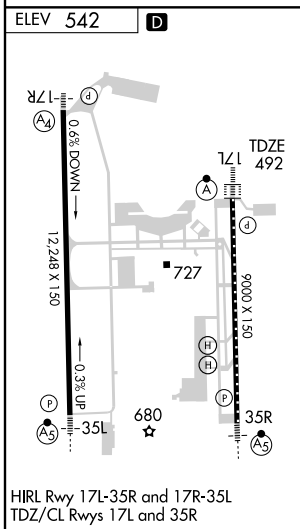
ATIS 124.4	AUSTIN APP CON 127.225 317.65 (355°-175°) 119.0 370.85 (176°-354°)	AUSTIN TOWER 121.0 281.5	GND CON 121.9 348.6	CLNC DEL 125.5 263.0	UNICOM 122.95
----------------------	--	------------------------------------	-------------------------------	--------------------------------	-------------------------

RADAR REQUIRED



SC-3, 22 OCT 2009 to 19 NOV 2009

SC-3, 22 OCT 2009 to 19 NOV 2009



1000	3000	BASTO
↑	↻	△
CWK R-128 CWK [17.7]		

CATEGORY	A	B	C	D
S-ILS 17L	CAT IIIA RVR 07			
S-ILS 17L	CAT IIIB RVR 06			
S-ILS 17L	CAT IIIC NA			

CATEGORY III ILS - SPECIAL AIRCREW & AIRCRAFT CERTIFICATION REQUIRED