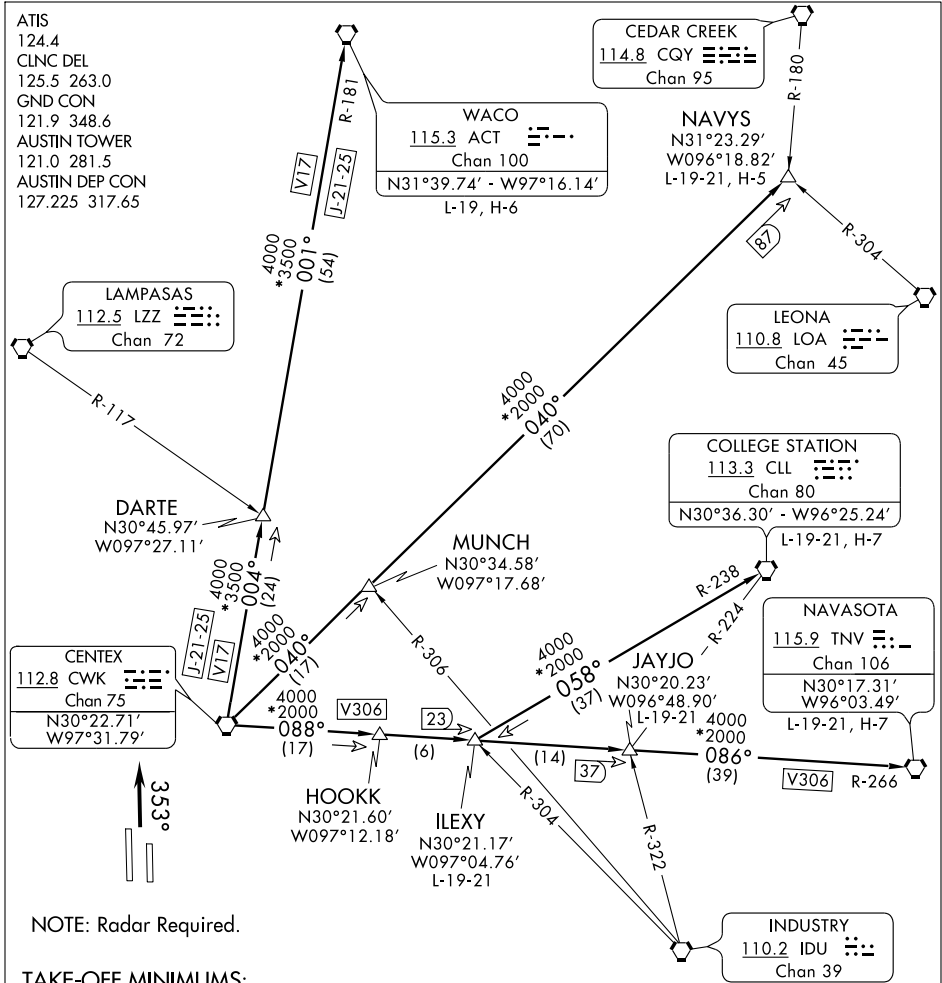


CENTEX THREE DEPARTURE

SL-556 (FAA)

AUSTIN-BERGSTROM INTL (AUS)

AUSTIN, TEXAS



SC-3, 22 OCT 2009 to 19 NOV 2009

SC-3, 22 OCT 2009 to 19 NOV 2009

NOTE: Radar Required.

TAKE-OFF MINIMUMS:
Rwys 17L/R, 35L/R: Standard.

- NOTE: Rwy 17L, trees 498' from departure end of runway, 576' left of centerline, up to 80' AGL/517' MSL. Tree 617' from departure end of runway, 584' right of centerline, 55' AGL/498' MSL.
- NOTE: Rwy 17R, trees 1007' from departure end of runway, 739' right of centerline up to 61' AGL/523' MSL.
- NOTE: Rwy 35R, tree 815' from departure end of runway, 663' right of centerline, 55' AGL/ 528' MSL.

(NARRATIVE ON FOLLOWING PAGE) NOTE: Chart not to scale.

CENTEX THREE DEPARTURE