

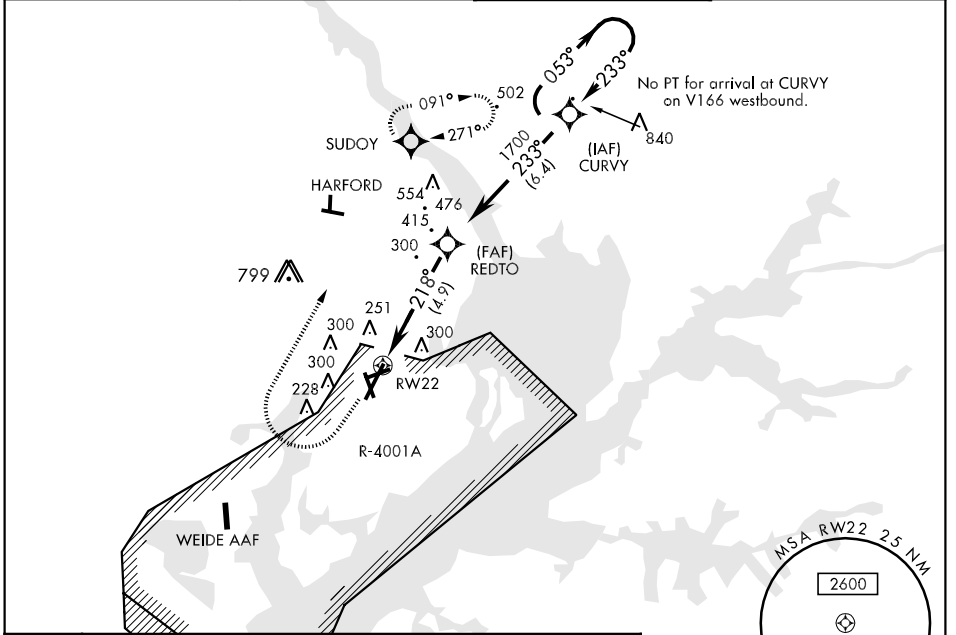
APCH CRS	Rwy Idg	7997
218°	TDZE	45
	Arprt Elev	57

AL-555 [USA]

PHILLIPS AAF (APG)

<p>▲ *For inoperative ODALS, increase LNAV all CATS visibility ¼ mile.</p> <p>▼ **When local altimeter setting not received, use Baltimore altimeter setting.</p> <p>VDP NA with Baltimore altimeter setting.</p> <p>DME/DME RNP-.3 NA</p>	<p>ODALS</p>	<p>MISSED APPROACH: Climbing right turn to 2000 direct SUDOY and hold.</p>
--	--------------	--

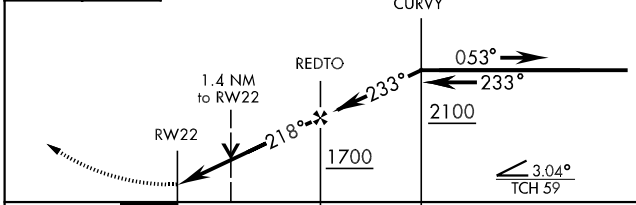
<p>ATIS ★</p> <p>108.4</p>	<p>POTOMAC APP CON</p> <p>126.75 307.9</p>	<p>PHILLIPS TOWER ★</p> <p>126.15 229.6</p>	<p>GND CON</p> <p>121.9</p>
----------------------------	--	---	-----------------------------



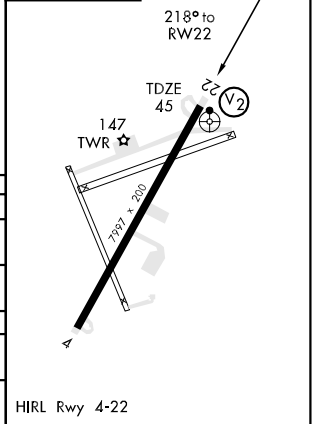
NE-3, 22 OCT 2009 to 19 NOV 2009

NE-3, 22 OCT 2009 to 19 NOV 2009

2000	SUDOY
------	-------



ELEV 57



CATEGORY	A	B	C	D
LNAV MDA*	560-¾ 515(600-¾)		560-1¼ 515(600-1¼)	560-1½ 515(600-1½)
CIRCLING	560-1 503(600-1)		560-1½ 503(600-1½)	620-2 563(600-2)
** BALTIMORE ALTIMETER SETTING MINIMUMS				
LNAV MDA*	640-¾ 595(600-¾)		640-1¼ 595(600-1¼)	640-1½ 595(600-1½)
CIRCLING	640-1 583(600-1)		640-1½ 583(600-1½)	640-2 583(600-2)