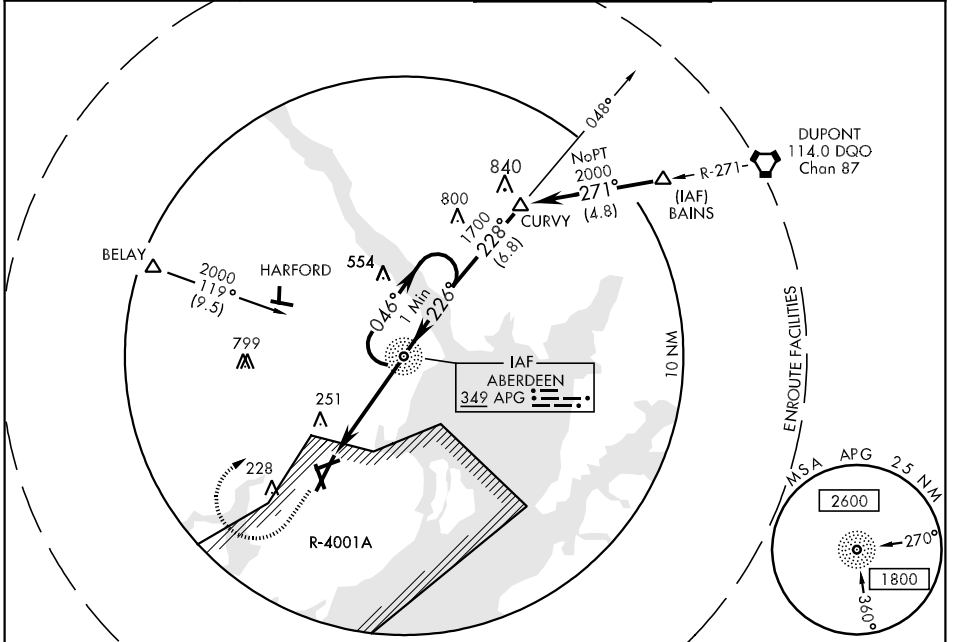


NDB APG 349	APCH CRS 226°	Rwy Idg TDZE Arpt Elev 7997 46 57	AL-555 [USA]	PHILLIPS AAF (APG)
-----------------------	-------------------------	---	--------------	--------------------

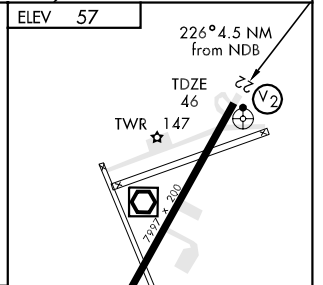
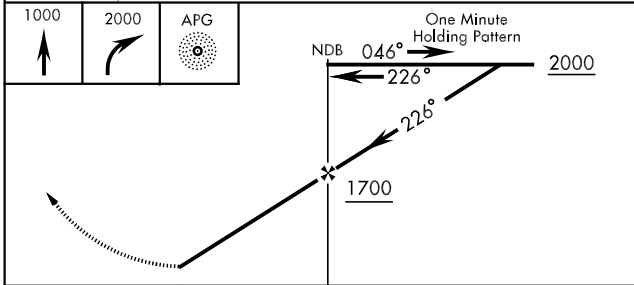
▲ * When local altimeter setting not received, use BALTIMORE altimeter setting. **ODALS** MISSED APPROACH: Climb to 1000, then climbing right turn to 2000 direct to APG NDB and hold.

ATIS ★ 108.4	POTOMAC APP CON 126.75 307.9	PHILLIPS TOWER ★ 126.15 229.6	GND CON 121.9
------------------------	--	---	-------------------------



NE-3, 22 OCT 2009 to 19 NOV 2009

NE-3, 22 OCT 2009 to 19 NOV 2009



CATEGORY	A	B	C	D
S-22	560-¾ 514(600-¾)		560-1¼ 514(600-1¼)	560-1½ 514(600-1½)
CIRCLING	560-1 502(600-1)		600-1½ 542(600-1½)	680-2 622(700-2)
* BALTIMORE ALTIMETER SETTING MINIMUMS				
S-22	640-¾ 594(600-¾)		640-1¼ 594(600-1¼)	640-1½ 594(600-1½)
CIRCLING	640-1 582(600-1)		680-1¾ 622(700-1¾)	760-2¼ 702(800-2¼)

ELEV 57

HIRL Rwy 4-22

FAF to MAP 4.5 NM

Knots	60	90	120	150	180
Min:Sec	4:30	3:00	2:15	1:48	1:30