

SPOKANE, WASHINGTON

TACAN RWY 5

TACAN SKA Chan 51	APCH CRS 057°	Rwy Idg 13,899 TDZE 2461 Arprt Elev 2461
-----------------------------	-------------------------	---

AL-553 [USAF]

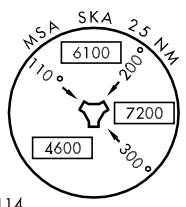
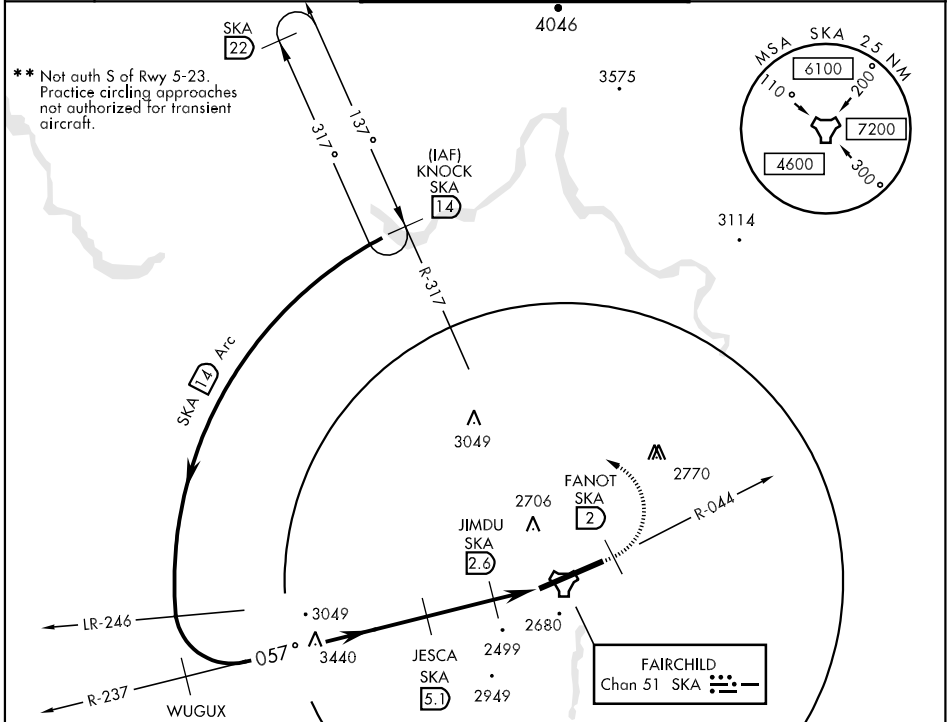
FAIRCHILD AFB (KSKA)

▼ * When ALS inop, CAT ABC vis to 1 mile, RVR to 50, CAT DE vis to 1 1/4 miles, RVR to 60.



MISSED APPROACH: Climb to 6000 on SKA TACAN R-044. At SKA 2 DME turn left hdg 302° to intcp SKA R-317 to KNOCK and hold, cont climb in hold to 6000.

ATIS 257.625	SPOKANE APP CON 026°-204° 133.35 263.0 205°-025° 123.75 282.25	FAIRCHILD TOWER 120.35 233.7	GND CON 123.6 275.8
------------------------	--	--	-------------------------------



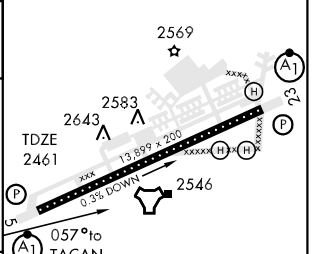
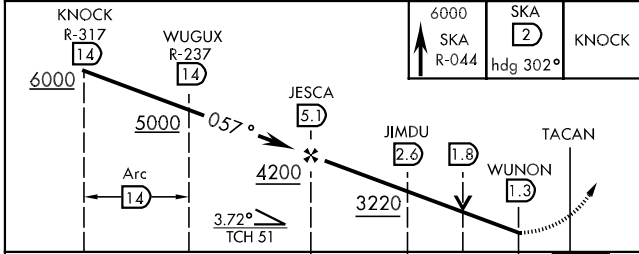
NW-1, 22 OCT 2009 to 19 NOV 2009

NW-1, 22 OCT 2009 to 19 NOV 2009

EMERG SAFE ALT 100 NM 10,900

CAUTION: VGSI and descent angle not coincident

ELEV 2461



CATEGORY	A	B	C	D	E
S-5 *	2820/24	359 (400-1/2)	2820/40	359 (400-3/4)	
CIRCLING **	3480-1 1/4 1019 (1100-1 1/4)	3480-1 1/2 1019 (1100-1 1/2)	3480-3	1019 (1100-3)	

HIRL Rwy 5-23
TDZL/CL Rwy 5-23

SPOKANE, WASHINGTON
Orig 09295

47°37'N-117°39'W

FAIRCHILD AFB (KSKA)
TACAN RWY 5