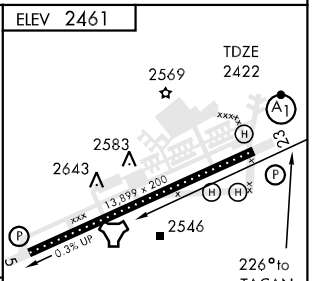
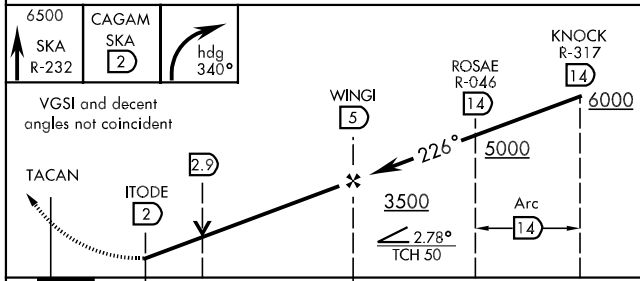
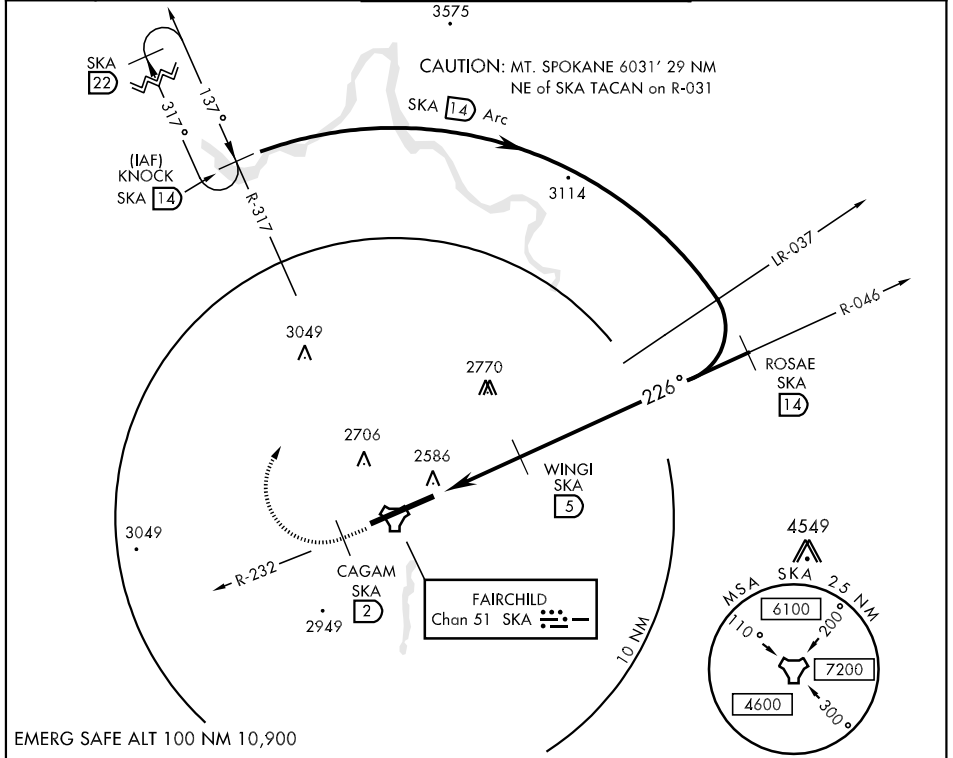


TACAN SKA Chan 51	APCH CRS 226°	Rwy Idg 13,899 TDZE 2422 Arprt Elev 2461	AL-553 [USAF]	FAIRCHILD AFB (KSKA)
----------------------	------------------	--	---------------	----------------------

▼ * When ALS inop, increase CAT AB vis to 1 mile, RVR to 50, CAT CD vis to 1½ mile, RVR to 60, CAT E vis to 1½ miles.
 ** Not auth S of Rwy 5-23. Practice circling approaches not authorized for transient aircraft.

ATIS 257.625	SPOKANE APP CON 026°-204° 133.35 263.0 205°-025° 123.75 282.25	FAIRCHILD TOWER 120.35 233.7	GND CON 123.6 275.8
-----------------	--	---------------------------------	------------------------



CATEGORY	A	B	C	D	E
S-TAC 23 *	2840/24 418 (400-½)	2840/40 418 (400-¾)	2840/40 418 (400-¾)	2840/50 418 (400-1)	2840/50 418 (400-1)
CIRCLING **	3480-1¼ 1019 (1100-1¼)	3480-1½ 1019 (1100-1½)	3480-3 1019 (1100-3)		

NW-1, 22 OCT 2009 to 19 NOV 2009

NW-1, 22 OCT 2009 to 19 NOV 2009