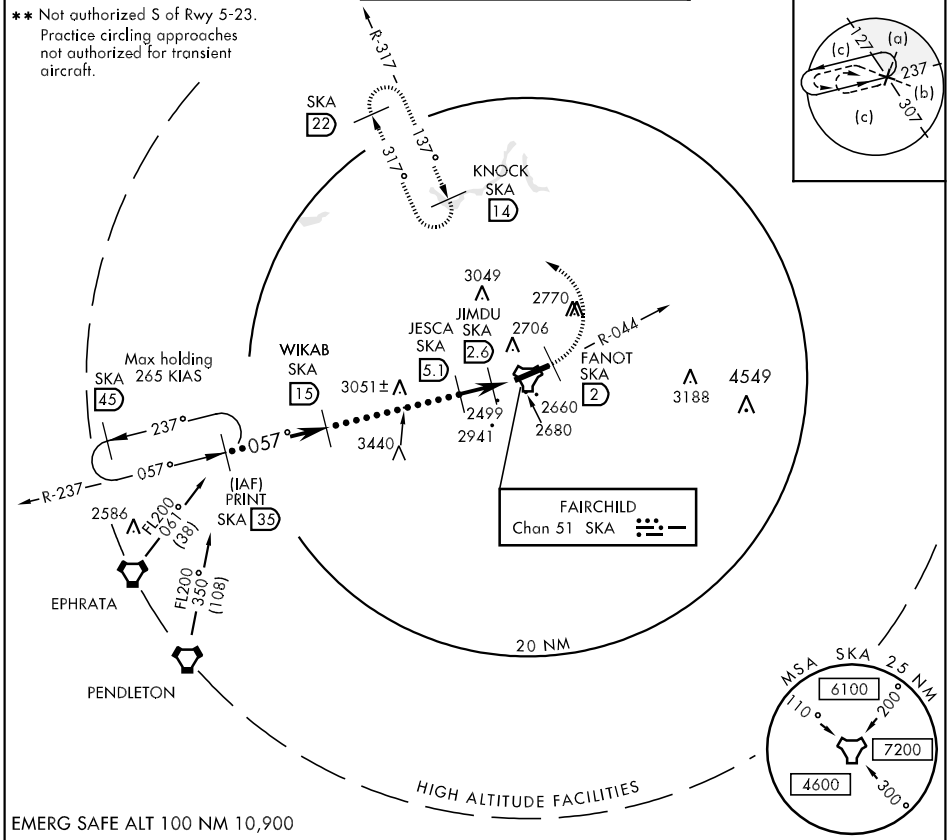


TACAN SKA Chan 51	APCH CRS 057°	Rwy ldg 13,899 TDZE 2461 Arpt Elev 2461	JAL-553 [USAF]	FAIRCHILD AFB (KSKA)
----------------------	------------------	---	----------------	----------------------

A1 * When ALS inop, increase CAT C vis to 1 mile, RVR to 50, CAT DE vis to 1½ miles, RVR to 60.

A1 MISSED APPROACH: Climb to 6000 on SKA TACAN R-044. At SKA 2 DME turn left hdg 302° to intcp SKA R-317 to KNOCK and hold, cont climb in hold to 6000.

ATIS 257.625	SPOKANE APP CON 026°-204° 133.35 263.0 205°-025° 123.75 282.25	FAIRCHILD TOWER 120.35 233.7	GND CON 123.6 275.8
-----------------	--	---------------------------------	------------------------



NW-1, 22 OCT 2009 to 19 NOV 2009

PRINT R-237 FL200 35	CAUTION: VGSI and descent angle not coincident	6000 SKA R-044	SKA 2 hdg 302°	KNOCK	ELEV 2461
WIKAB 15	JESCA 5.1	JIMDU 2.6	WUNON 1.3	TACAN 1.3	2569
5500	4200	3220	2.5 NM	1.3	0.5
3.72° TCH 51					
CATEGORY	C	D	E		
S-5 *	2820/40	359	(400-¾)		
CIRCLING **	3480-3 1019 (1100-3)				
TDZE 2461 0.3% DOWN 2546 057° to TACAN A1					
HIRL Rwy 5-23 TDZL/CL Rwy 5-23					