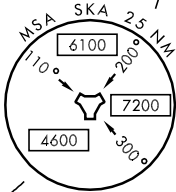
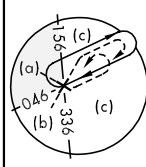
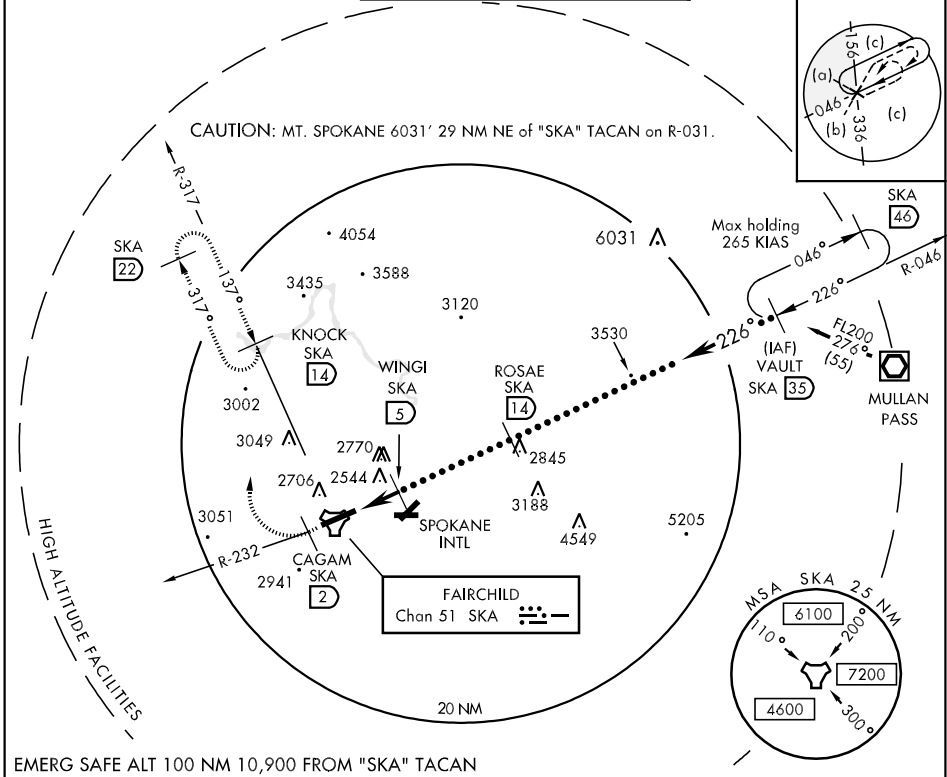


TACAN SKA Chan 51	APCH CRS 226°	Rwy ldg 13,899 TDZE 2422 Arpt Elev 2461	JAL-553 [USAF]	FAIRCHILD AFB (KSKA)
----------------------	------------------	---	----------------	----------------------

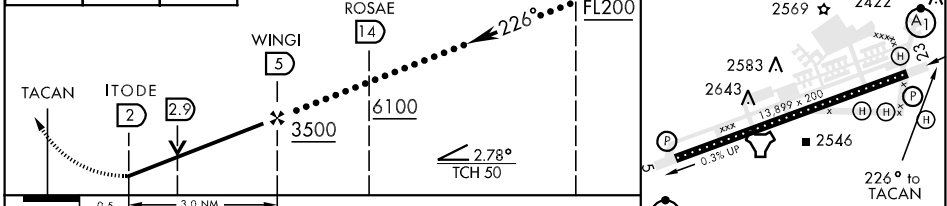
▼ * When ALS inop, increase CAT CD vis to 1¼ miles, RVR to 60, CAT E vis to 1½ miles.
 ** Not authorized S of Rwy 5-23. Practice circling approaches not authorized for transient aircraft.

ATIS 257.625	SPOKANE APP CON 026°-204° 133.35 263.0 205°-025° 123.75 282.25	FAIRCHILD TOWER 120.35 233.7	GND CON 123.6 275.8
-----------------	--	---------------------------------	------------------------



EMERG SAFE ALT 100 NM 10,900 FROM "SKA" TACAN

6500 SKA R-232	CAGAM SKA 2	CAUTION: VGSI and descent angles not coincident.	VAULT R-046 FL200	ELEV 2461
----------------	-------------	--	-------------------	-----------



CATEGORY	C	D	E
S-TAC 23 *	2840/40 418 (400-¾)	2840/50 418 (400-1)	
CIRCLING **	3480-3	1019 (1100-3)	

NW-1, 22 OCT 2009 to 19 NOV 2009

NW-1, 22 OCT 2009 to 19 NOV 2009