

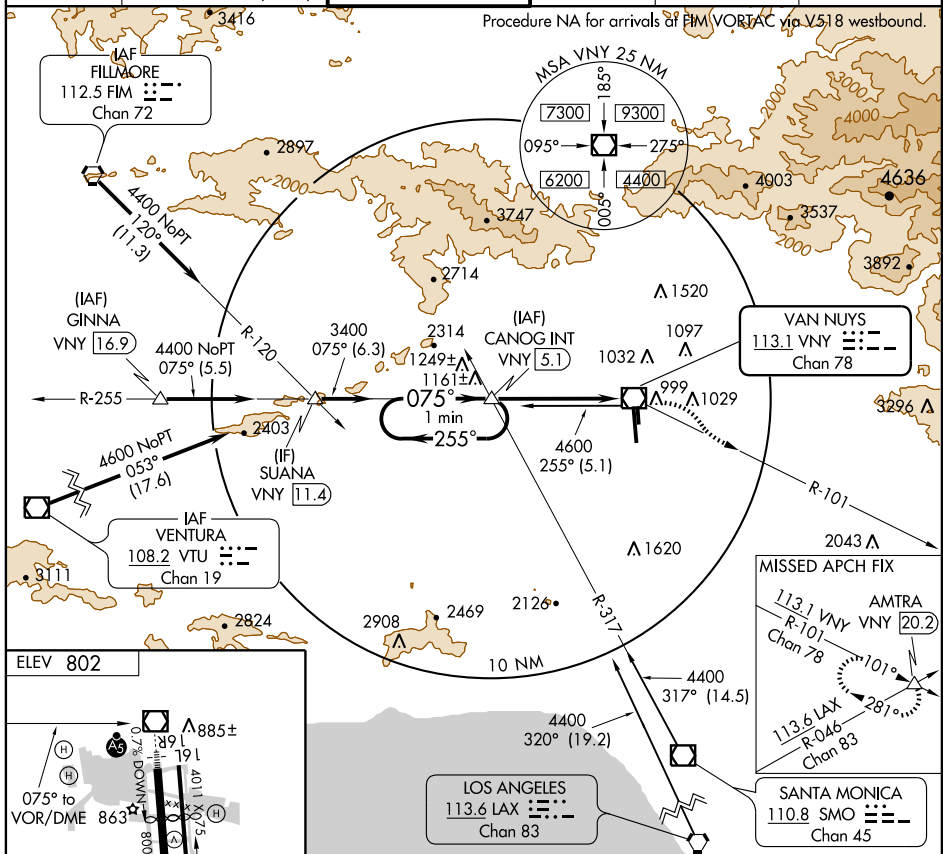
# VOR-A VAN NUYS (VNY)

VOR/DME VNY <b>113.1</b> Chan <b>78</b>	APP CRS <b>075°</b>	Rwy Idg TDZE Apt Elev	<b>N/A</b> <b>N/A</b> <b>802</b>
---	------------------------	-----------------------------	--

**▽** When local altimeter setting not received, use Burbank altimeter setting and increase all MDAs 20 feet.

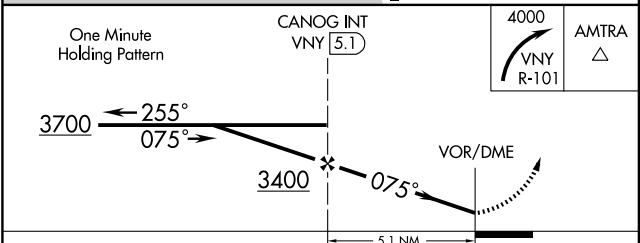
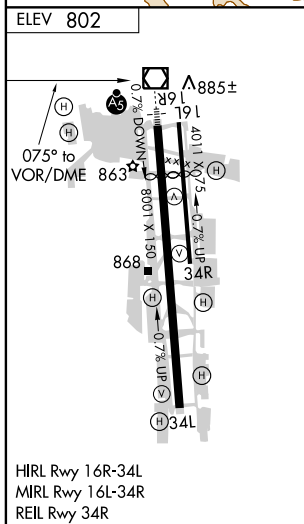
**▲** MISSED APPROACH: Climbing right turn 4000 via VNY R-101 to AMTRA INT/ 20.2 DME and hold.

ATIS <b>118.45</b>	SOCAL APP CON <b>120.4 360.6 (NORTH)</b> <b>134.2 338.2 (WEST)</b>	VAN NUYS TOWER* <b>119.3 (CTAF) 0 239.0</b>	GND CON <b>121.7</b>	CLNC DEL <b>126.6 239.0</b>	UNICOM <b>122.95</b>
-----------------------	--	--	-------------------------	--------------------------------	-------------------------



SW-3, 22 OCT 2009 to 19 NOV 2009

SW-3, 22 OCT 2009 to 19 NOV 2009



CATEGORY	A	B	C	D
CIRCLING	1500-1	698 (700-1)	1500-2 698 (700-2)	1500-2½ 698 (700-2½)