

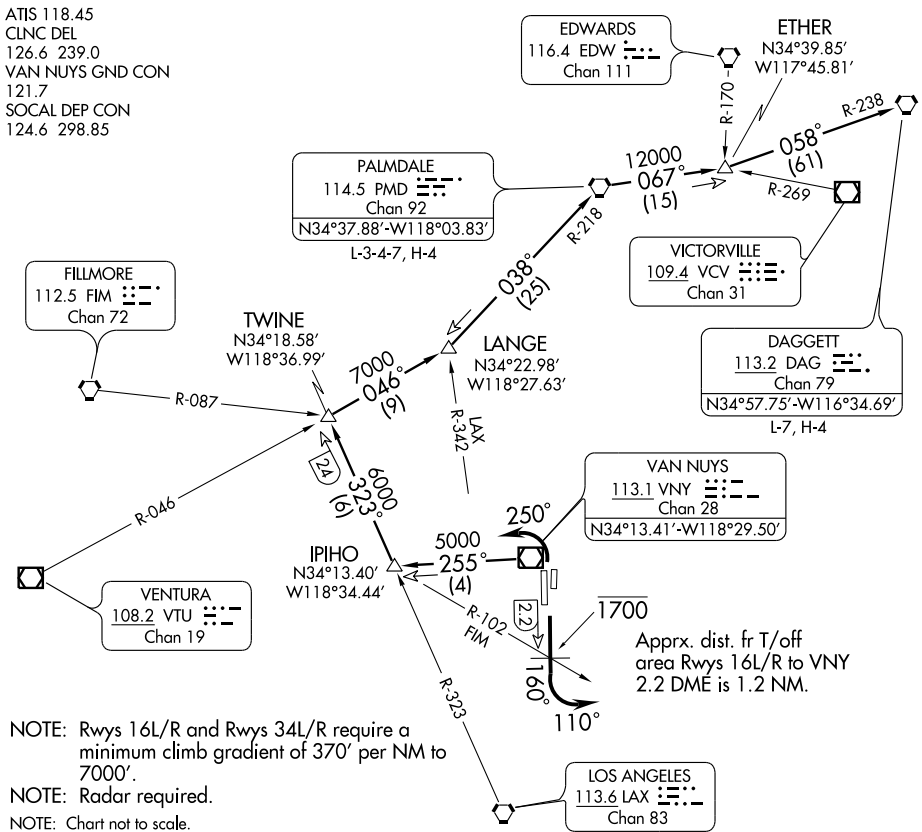
(NUAL6.VNY) 09015

NEWHALL SIX DEPARTURE

SL-552 (FAA)

VAN NUYS (VNY)
VAN NUYS, CALIFORNIA

ATIS 118.45
CLNC DEL
126.6 239.0
VAN NUYS GND CON
121.7
SOCAL DEP CON
124.6 298.85



SW-3, 22 OCT 2009 to 19 NOV 2009

SW-3, 22 OCT 2009 to 19 NOV 2009

NOTE: Rwy 16L/R and Rwy 34L/R require a minimum climb gradient of 370' per NM to 7000'.

NOTE: Radar required.

NOTE: Chart not to scale.

DEPARTURE ROUTE DESCRIPTION

TAKE-OFF RUNWAYS 16L/R: Fly heading 160° to cross FIM R-102 or VNY 2.2 DME at or below 1700'. Then turn left heading 110° for vectors to VNY R-255 and LAX R-323. Then via (transition) or (assigned route).

TAKE-OFF RUNWAYS 34L/R: Turn left heading 250° after departure end of runway for vectors to VNY R-255 and LAX R-323. Then via (transition) or (assigned route).

LOST COMMUNICATIONS: If not in contact with Departure Control within 3 NM:
Rwys 16L/R: Intercept the LAX R-323, then as assigned; Rwy 34L/R: Intercept the VNY R-255, then as assigned.

DAGGETT TRANSITION (NUAL6.DAG): Proceed on the VNY R-255 to intercept and proceed via the LAX R-323 and the VTU R-046 to LANGE INT; then the PMD R-218 to the PMD VORTAC. Then via the PMD R-067 and the DAG R-238 to DAG VORTAC.

PALMDALE TRANSITION (NUAL6.PMD): Proceed on the VNY R-255 to intercept and proceed via the LAX R-323 and the VTU R-046 to LANGE INT; then via the PMD R-218 to the PMD VORTAC.

NEWHALL SIX DEPARTURE

(NUAL6.VNY) 09015

VAN NUYS, CALIFORNIA
VAN NUYS (VNY)