

GLENDALE NINE DEPARTURE

SL-552 (FAA)

VAN NUYS (VNY)
VAN NUYS, CALIFORNIA

ATIS 118.45
CLNC DEL
126.6 239.0
GND CON
121.7
SOCAL DEP CON
124.6 298.85

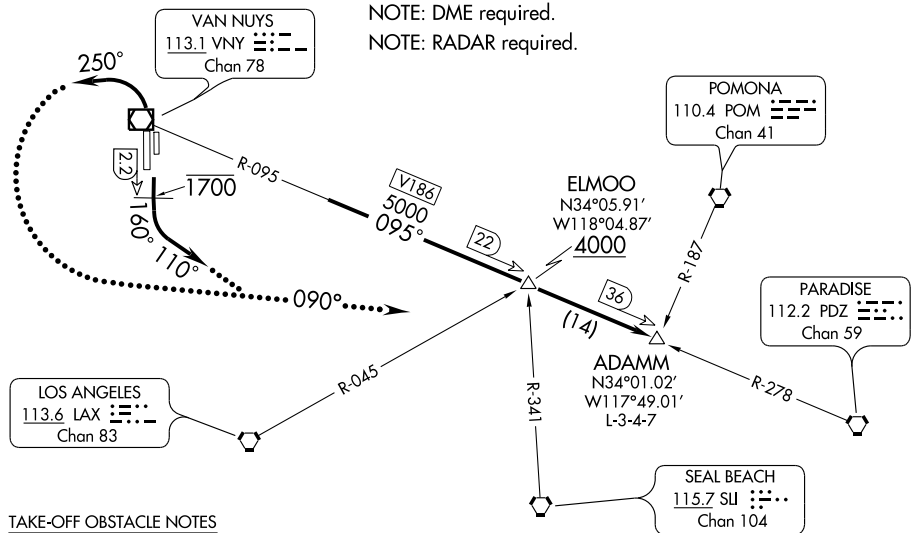
TAKE-OFF MINIMUMS

Rwy 16L, Standard with the following minimum climb requirements:
ATC climb of 300' feet per NM to 3800, obstacle climb of 240' per NM to 2000.

Rwy 16R, Standard with the following minimum climb requirements:
ATC climb of 300' feet per NM to 3800, obstacle climb of 280' per NM to 2300.

Rwy 34L, 34R, standard with minimum climb of 480' per NM to 4200.

NOTE: DME required.
NOTE: RADAR required.



TAKE-OFF OBSTACLE NOTES

RWY 16L, Light on hangar 713' from DER, 361' left of centerline, 27' AGL/798' MSL.

RWY 16R, Hangar 209' from DER, 516' right of centerline, 9' AGL/755' MSL.
Flagpole 570' from DER, 549' right of centerline, 15' AGL/761' MSL.
Building 941' from DER, 599' left of centerline, 28' AGL/774' MSL.
Multiple trees beginning 1129' from DER, left and right of centerline, up to 72 AGL/818' MSL.

RWY 34L, Blast fence 169' from DER, 405' left of centerline, 10' AGL/812' MSL.
Obstruction light on blast fence, 241' from DER, 195' left of centerline, 17' AGL/819' MSL.
Multiple trees beginning 325' from DER, 549' right of centerline, up to 119' AGL/921' MSL.
Railroad 305' from DER, 369' right of centerline, 30' AGL/832' MSL.
Building 424' from DER, 589' right of centerline, 29' AGL/831' MSL.
Antenna on building 450' from DER, 462' left of centerline, 15' AGL/817' MSL.
Pole 1376' from DER, 779' left of centerline, 68' AGL/870' MSL.

RWY 34R, Railroad 305' from DER, 5' right of centerline, 33' AGL/832' MSL.
Multiple trees beginning 325' from DER, 174' right of centerline, up to 122' AGL/921' MSL.
Building 424' from DER, 214' right of centerline, 32' AGL/831' MSL.

NOTE: Chart not to scale.

DEPARTURE ROUTE DESCRIPTION

TAKE-OFF RUNWAYS 16L/R: Climb via heading 160° to cross VNY 2.2 DME at or below 1700'. Then climbing left turn heading 110° for vectors to VNY R-095 to ADAMM INT. Then via (assigned route).

TAKE-OFF RUNWAYS 34L/R: Climbing left turn via heading 250° for vectors to VNY R-095 to ADAMM INT. Then via (assigned route).

LOST COMMUNICATIONS: If not in contact with departure control within 3 NM, turn left heading 090° to intercept VNY R-095 to ADAMM INT, maintain 5000 or as assigned.

GLENDALE NINE DEPARTURE

SW-3, 22 OCT 2009 to 19 NOV 2009

SW-3, 22 OCT 2009 to 19 NOV 2009