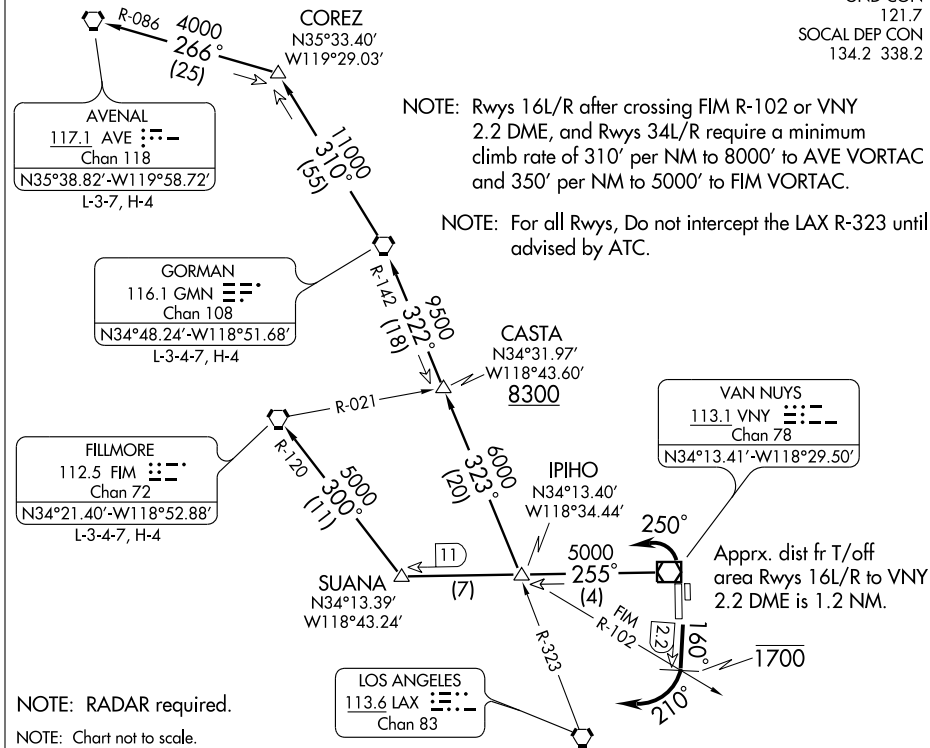


ATIS 118.45
CLNC DEL
126.6 239.0
GND CON
121.7
SOCAL DEP CON
134.2 338.2



SW-3, 22 OCT 2009 to 19 NOV 2009

SW-3, 22 OCT 2009 to 19 NOV 2009

DEPARTURE ROUTE DESCRIPTION

TAKE-OFF RUNWAYS 16L/R: Fly heading 160°, cross 2.2 DME at or below 1700'. Then turn right heading 210° for vectors to VNY R-255 and GMN R-142. Then via (transition) or (assigned route).

TAKE-OFF RUNWAYS 34L/R: Turn left heading 250° after departure end of runway for vectors to VNY R-255 and GMN R-142. Then via (transition) or (assigned route).

LOST COMMUNICATIONS: If not in contact with departure control within 3 NM: Rws 16L/R, intercept the LAX R-323. Then as assigned; Rws 34L/R, intercept the VNY R-255. Then as assigned.

AVENAL TRANSITION (CNOG8.AVE): Proceed along the VNY R-255 to intercept and proceed along the LAX R-323 and GMN R-142 to GMN VORTAC. Then via the GMN R-310 and AVE R-086 to AVE VORTAC. Cross CASTA INT at or above 8300'.

FILLMORE TRANSITION (CNOG8.FIM): Proceed via the VNY R-255 and FIM R-120 to FIM VORTAC.

GORMAN TRANSITION (CNOG8.GMN): Proceed via the VNY R-255 to intercept and proceed via the LAX R-323 and GMN R-142 to GMN VORTAC. Cross CASTA INT at or above 8300'.