

TARKIO, MISSOURI

AL-551 (FAA)

RNAV (GPS) RWY 36

TARKIO/ GOULD PETERSON MUNI (K57)

WAAS CH 50206 W36A	APP CRS 358°	Rwy ldg TDZE Apt Elev	3564 912 913
----------------------------------------	------------------------	-----------------------------	-----------------------------------------

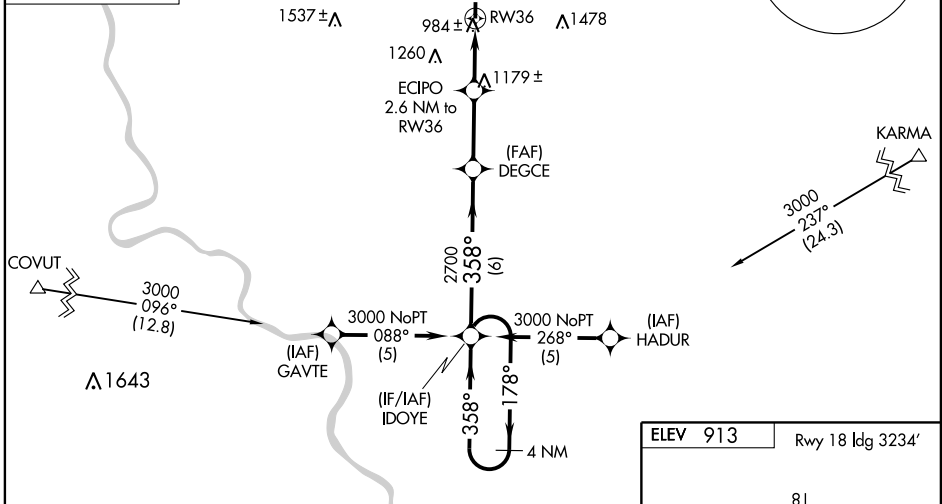
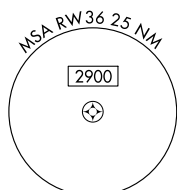
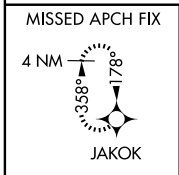
▽ Baro-VNAV NA.
△ NA Visibility reduction by helicopters NA.
 DME/DME RNP- 0.3 NA.
 Use Shenandoah altimeter setting; if not received, use Clarinda
 altimeter setting and increase all DAs 13 feet/MDAs 20 feet,
 and LNAV/VNAV Cats. A/B/C visibility ¼ mile.

MISSED APPROACH: Climb to 3000 direct JAKOK and hold.

SHENANDOAH AWOS-3
125.525

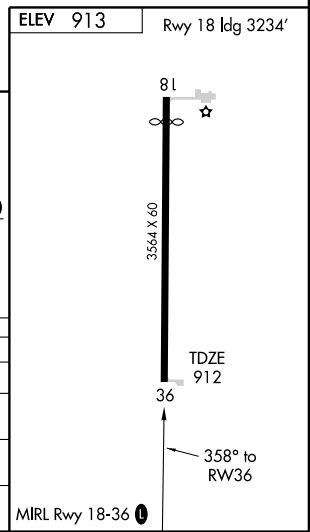
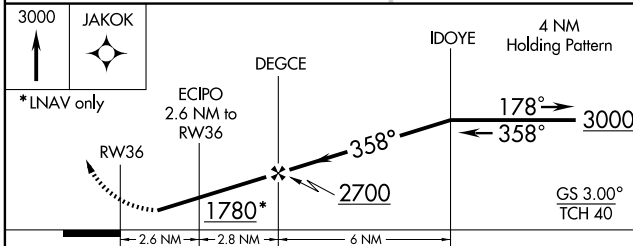
MINNEAPOLIS CENTER
119.6 290.4

CTAF
122.9 0



NC-3, 22 OCT 2009 to 19 NOV 2009

NC-3, 22 OCT 2009 to 19 NOV 2009



CATEGORY	A	B	C	D
LPV DA	1280-1¼	368 (400-1¼)		NA
LNAV/VNAV DA	1352-1½	440 (500-1½)		NA
LNAV MDA	1480-1	568 (600-1)	1480-1½ 568 (600-1½)	NA
CIRCLING	1520-1 607 (700-1)	1540-1 627 (700-1)	1540-1¾ 627 (700-1¾)	NA

TARKIO, MISSOURI
Orig 08269

40°27'N-95°22'W

RNAV (GPS) RWY 36