

# RNAV (GPS) RWY 18

TARKIO/ GOULD PETERSON MUNI (K57)

WAAS CH <b>57906</b> <b>W18A</b>	APP CRS <b>178°</b>	Rwy ldg TDZE Apt Elev	<b>3234</b> <b>913</b> <b>913</b>
--	------------------------	-----------------------------	---

**▼** Baro-VNAV NA.  
**▲ NA** Visibility reduction by helicopters NA.  
 DME/DME RNP- 0.3 NA.  
 Use Shenandoah altimeter setting; if not received, use Clarinda altimeter setting and increase all DAs 13 feet/MDAs 20 feet, and LNAV Cat. C visibility ¼ mile.

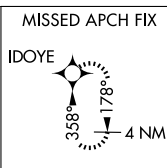
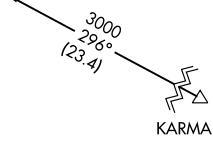
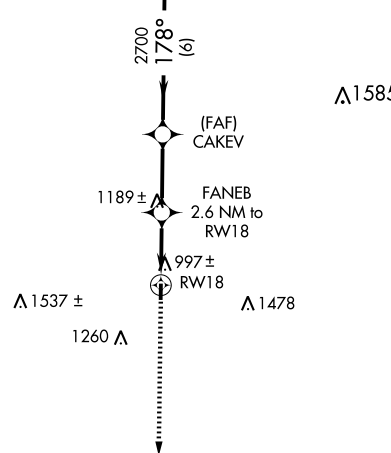
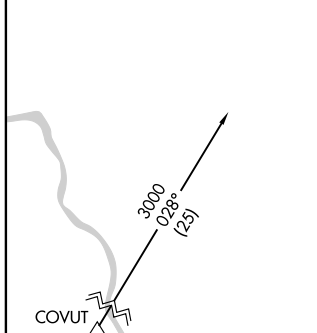
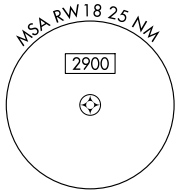
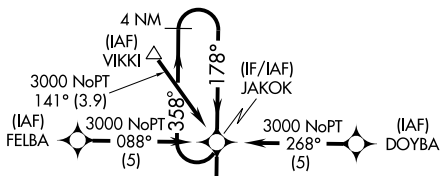
MISSED APPROACH: Climb to 3000 direct IDOYE and hold.

SHENANDOAH AWOS-3  
**125.525**

MINNEAPOLIS CENTER  
**119.6 290.4**

CTAF  
**122.9**

Procedure NA for arrivals at VIKKI via V159 northwest bound.



ELEV 913 Rwy 18 ldg 3234'

178° to RW18

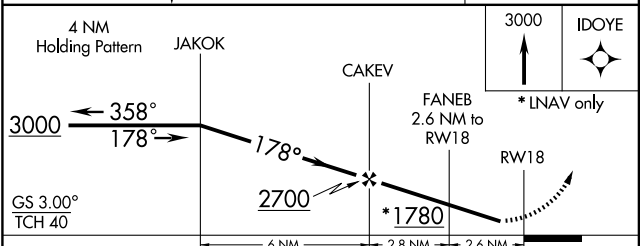
TDZE 913

81

3564 X 60

36

MIRL Rwy 18-36



CATEGORY	A	B	C	D
LPV DA	1272-1¼	359 (400-1¼)		NA
LNAV/ VNAV DA	1375-1¾	462 (500-1¾)		NA
LNAV MDA	1500-1	587 (600-1)	1500-1½ 587 (600-1½)	NA
CIRCLING	1520-1 607 (700-1)	1540-1 627 (700-1)	1540-1¾ 627 (700-1¾)	NA

NC-3, 22 OCT 2009 to 19 NOV 2009

NC-3, 22 OCT 2009 to 19 NOV 2009