

RNAV (GPS) Y RWY 33

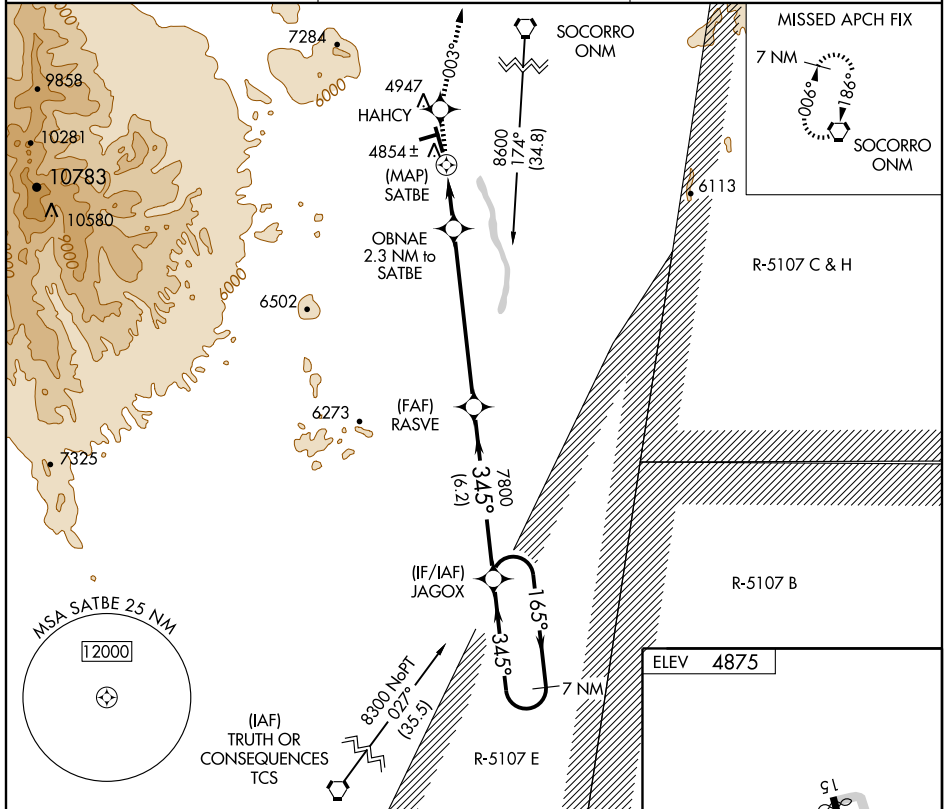
SOCORRO MUNI (ONM)

| | | |
|-------------|----------|-------------|
| APP CRS | Rwy Idg | 5659 |
| 345° | TDZE | 4782 |
| | Apt Elev | 4875 |

▽ Circling NA west of Rwy 15-33. DME/DME RNP-0.3 NA.
△ NA Visibility reduction by helicopters NA. Procedure NA when R-5107E active. Obtain local altimeter setting on CTAF; when not received, procedure NA.

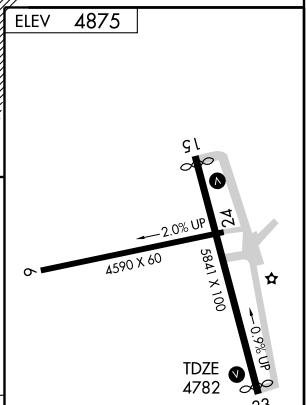
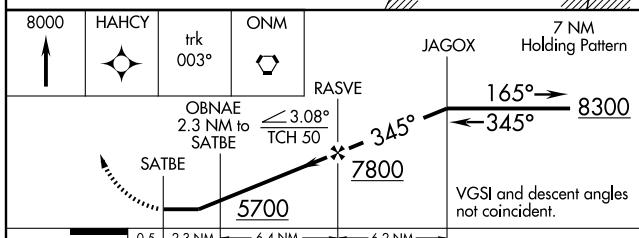
MISSED APPROACH: Climb to 8000 direct HAHCY and via track 003° to ONM VORTAC and hold.

| | | |
|--------------------------|---|---------------------------------|
| AWOS-3 118.325 | ALBUQUERQUE CENTER 124.325 288.25 | UNICOM 122.8 (CTAF) 0 |
|--------------------------|---|---------------------------------|



SW-1, 22 OCT 2009 to 19 NOV 2009

SW-1, 22 OCT 2009 to 19 NOV 2009



| CATEGORY | A | B | C | D |
|----------|-----------------------|-----------------------|-------------------------|----|
| LNVA MDA | 5260-1 | 478 (500-1) | 5260-1½ 478 (500-1½) | NA |
| CIRCLING | 5260-1 385 (400-1) | 5340-1 465 (500-1) | 5340-1½ 465 (500-1½) | NA |

MIRL Rwy 15-33 and 6-24 0