

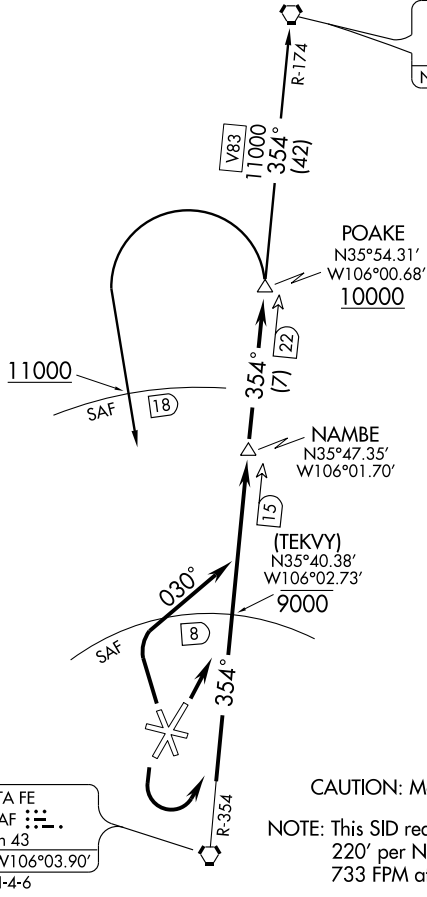
POAKE ONE DEPARTURE

SL-548 (FAA)

SANTA FE MUNI (SAF)
SANTA FE, NEW MEXICO

ATIS 128.55
GND CON
121.7
SANTA FE TOWER*
119.5 (CTAF) 239.3
ALBUQUERQUE CENTER
132.8 346.35

TAOS
117.6 TAS
Chan 123
N36°36.53'-W105°54.38'
L-8



NOTE: Chart not to scale.

NOTE: DME required.

CAUTION: Mountainous terrain all quadrants.

NOTE: This SID requires a minimum climb of 220' per NM to 11,000' (550 FPM at 150K, 733 FPM at 200K, 916 FPM at 250K).

DEPARTURE ROUTE DESCRIPTION

TAKE-OFF RUNWAY 2: Climb on runway heading to....

TAKE-OFF RUNWAY 20: Climbing left turn to....

TAKE-OFF RUNWAY 33: Climbing right turn to heading 030° to....

....Intercept and proceed via SAF R-354 to POAKE DME fix. Cross 8 DME north of SAF VORTAC at or below 9000'. Cross POAKE DME fix at or above 10000'. Thence via assigned (transition) or (route).

SANTA FE TRANSITION (POAKE1.SAF): From POAKE DME fix left turn direct SAF VORTAC. Thence via (assigned route). Cross 18 DME north of SAF VORTAC at or above 11000'.

TAOS TRANSITION (POAKE1.TAS): From POAKE DME fix via SAF R-354 and V83 (TAS R-174) to TAS VORTAC. Thence via (assigned route).

POAKE ONE DEPARTURE

SW-1, 22 OCT 2009 to 19 NOV 2009

SW-1, 22 OCT 2009 to 19 NOV 2009