

NDB RWY 6

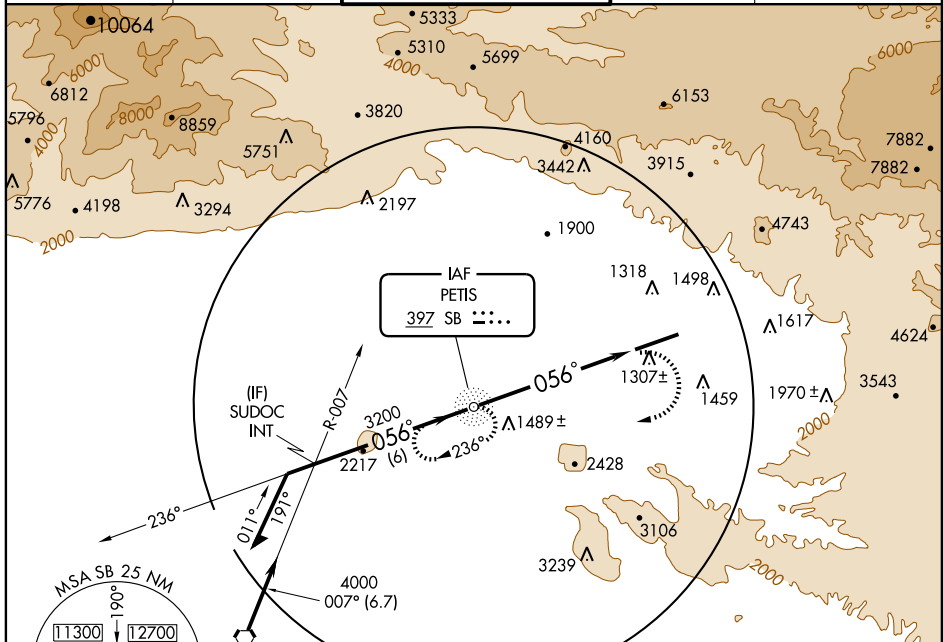
SAN BERNARDINO INTL (SBD)

NDB SB 397	APP CRS 056°	Rwy Idg 10001
		TDZE 1091
		Apt Elev 1159

NA When local altimeter setting not received, procedure NA.
 Circling NA north of Rwy 6-24.
 Visibility reduction by helicopters NA.

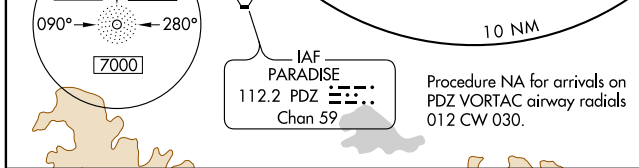
MISSED APPROACH: Climbing right turn to 4400 direct SB NDB and hold, continue climb-in-hold to 4400.

ATIS 124.175	SOCAL APP CON 127.25 318.2	SAN BERNARDINO TOWER* 119.45 (CTAF) 0	GND CON 121.8	UNICOM 122.975
------------------------	--------------------------------------	---	-------------------------	--------------------------

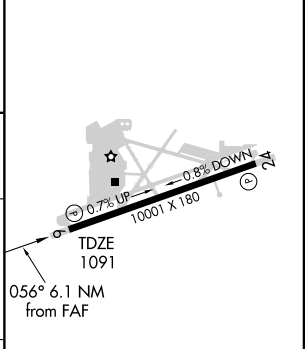
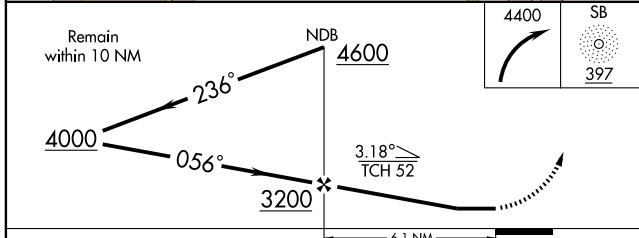


SW-3, 22 OCT 2009 to 19 NOV 2009

SW-3, 22 OCT 2009 to 19 NOV 2009



ELEV 1159



CATEGORY	A	B	C	D
S-6	2540-1¼ 1449 (1400-1¼)	2540-1½ 1449 (1400-1½)	2540-3	1449 (1400-3)
CIRCLING	2540-1¼ 1381 (1400-1¼)	2540-1½ 1381 (1400-1½)	2540-3	1381 (1400-3)

HIRL Rwy 6-24 0

FAF to MAP 6.1 NM

Knots	60	90	120	150	180
Min:Sec	6:06	4:04	3:03	2:26	2:02