

PALM SPRINGS, CALIFORNIA

AL-545 (FAA)

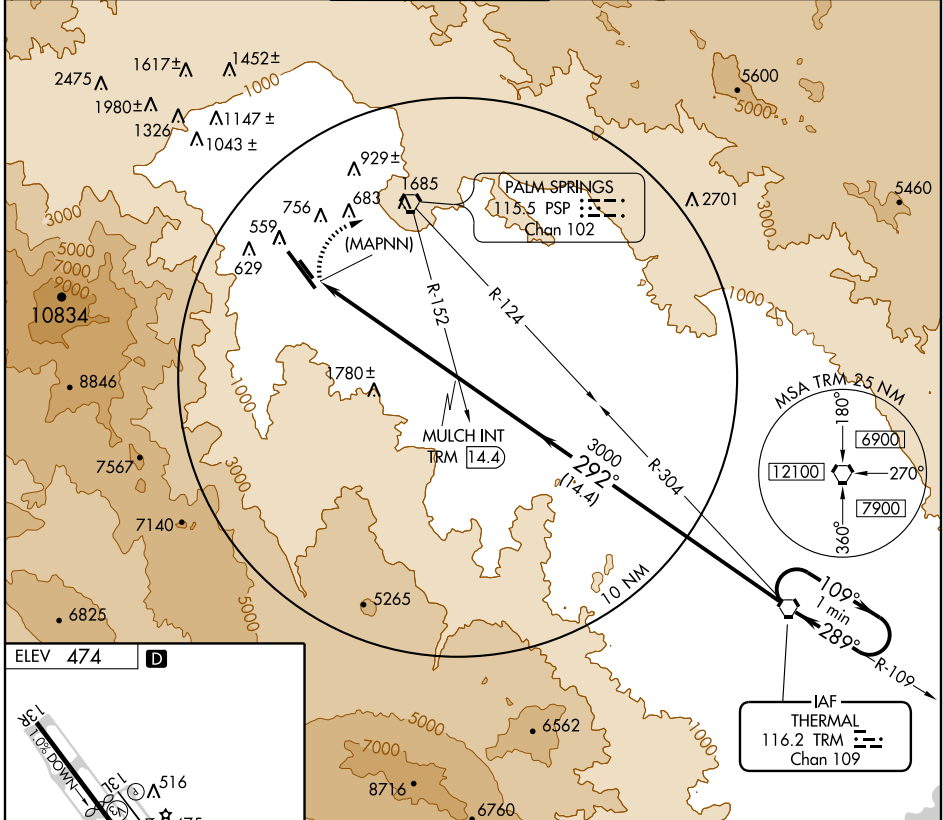
VOR or GPS-B PALM SPRINGS INTL (PSP)

VORTAC TRM 116.2 Chan 109	APP CRS 292°	Rwy Idg TDZE Apt Elev N/A N/A 474
---	------------------------	---

⚠ Circling not authorized southwest of Rwy 13R-31L.

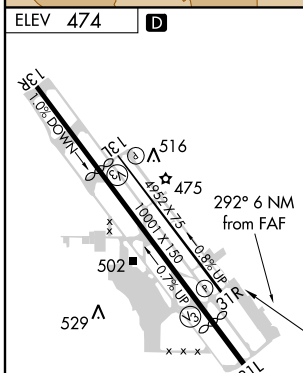
MISSED APPROACH: Climbing right turn to 4000 direct PSP VORTAC then via PSP R-124 and TRM R-304 to TRM VORTAC and hold.

ATIS 118.25	SOCAL APP CON* 126.7 370.95 (W-N) 135.275 251.1 (NE-SW)	PALM SPRINGS TOWER* 119.7 (CTAF) 0 377.05	GND CON 121.9	CLNC DEL 128.35	UNICOM 122.95
-----------------------	---	---	-------------------------	---------------------------	-------------------------



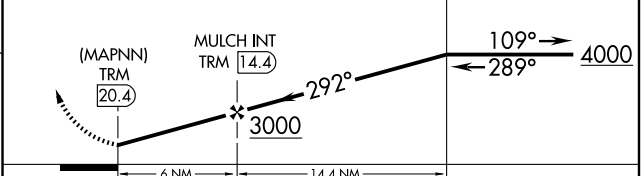
SW-3, 22 OCT 2009 to 19 NOV 2009

SW-3, 22 OCT 2009 to 19 NOV 2009



HIRL Rwy 13R-31L
MIRL Rwy 13L-31R
REIL Rws 13L, 13R, 31L, and 31R

ELEV 474	D	4000	PSP 115.5	PSP R-124 115.5	TRM R-304 116.2	TRM 116.2	VORTAC One Minute Holding Pattern
----------	----------	------	--------------	--------------------	--------------------	--------------	--------------------------------------



FAF to MAP 6 NM					CATEGORY	A	B	C	D
Knots	60	90	120	150	180	2300-1¼	2300-1½	2300-3	1826 (1900-3)
Min:Sec	6:00	4:00	3:00	2:24	2:00	1826 (1900-1¼)	1826 (1900-1½)		

PALM SPRINGS, CALIFORNIA
Amdt 3 08325

33°50'N-116°30'W

PALM SPRINGS INTL (PSP) VOR or GPS-B