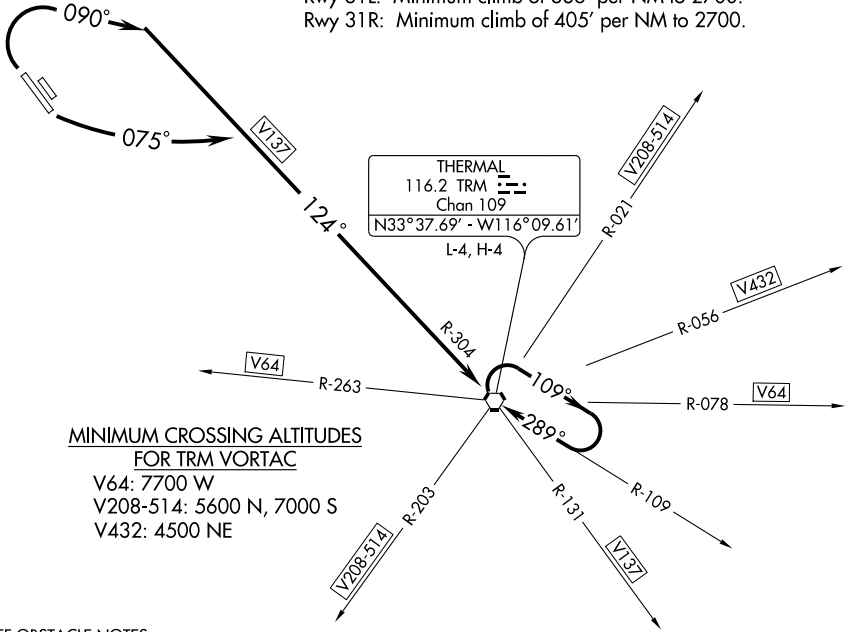


THERMAL SIX DEPARTURE

ATIS 118.25
GND CON
121.9
SOCAL DEP CON
126.7 370.95 (W-N)
135.275 251.1 (NE-SW)

TAKE-OFF MINIMUMS

Rwy 13L: Minimum climb of 440' per NM to 2300.
Rwy 13R: Minimum climb of 422' per NM to 2300.
Rwy 31L: Minimum climb of 386' per NM to 2700.
Rwy 31R: Minimum climb of 405' per NM to 2700.



MINIMUM CROSSING ALTITUDES FOR TRM VORTAC

V64: 7700 W
V208-514: 5600 N, 7000 S
V432: 4500 NE

TAKE-OFF OBSTACLE NOTES

- Rwy 13L: Trees beginning 299' from DER, 530' left of centerline, up to 66' AGL/465' MSL. Hangar 935' from DER, 552' left of centerline, 31' AGL/440' MSL
- Rwy 13R: Trees beginning 1170' from DER, 239' right of centerline, up to 100' AGL/599' MSL. Poles beginning 815' from DER, 209' right of centerline, up to 44' AGL/433' MSL. LT 843' from DER, 441' right of centerline, 38' AGL/427' MSL. Antenna 1642' from DER, 26' right of centerline, 53' AGL/442' MSL.
- Rwy 31L: Poles beginning 1641' from DER, 125' right of centerline, up to 31' AGL/550' MSL. Towers beginning 2418' from DER, 402' left of centerline, up to 59' AGL/560' MSL. Tree 3016' from DER, 66' right of centerline, 43' AGL/562' MSL.
- Rwy 31R: Trees beginning 787' from DER, 326' right of centerline, up to 48' AGL/507' MSL. Multiple bushes beginning 305' from DER, 233' right of centerline, up to 3' AGL/462' MSL. Vent on bldg 919' from DER, 399' right of centerline, 15' AGL/474' MSL.

NOTE: Chart not to scale.

DEPARTURE ROUTE DESCRIPTION

TAKE-OFF RUNWAYS 13L/R: Climbing left turn heading 075° to intercept TRM R-304 to TRM VORTAC. Thence

TAKE-OFF RUNWAYS 31L/R: Climb heading 090° to intercept TRM R-304 to TRM VORTAC. Thence

. . . .If not at MEA/MCA at TRM VORTAC, climb in TRM holding pattern until reaching the MEA/MCA for assigned route of flight.

THERMAL SIX DEPARTURE

SW-3, 22 OCT 2009 to 19 NOV 2009

SW-3, 22 OCT 2009 to 19 NOV 2009