

TACAN OFF Chan 54	APCH CRS 119°	Rwy ldg 10,700 TDZE 1042 Arpt Elev 1052
-----------------------------	-------------------------	--

AL-544 [USAF]

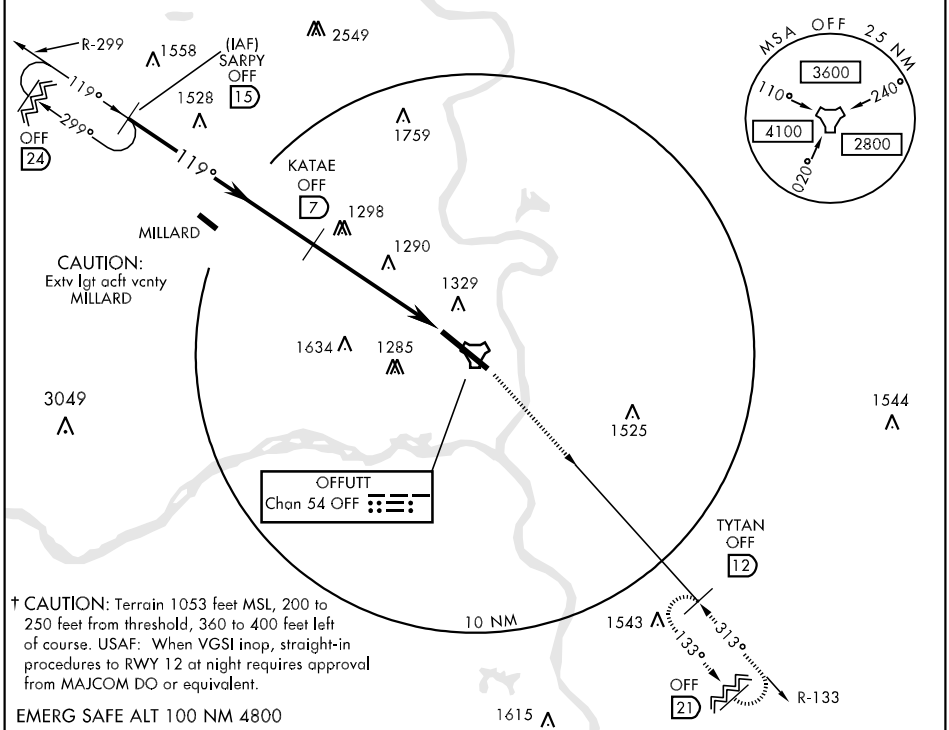
OFFUTT AFB (KOFF)

▼ * When ALS inop, increase CAT AB RVR to 50 and vis to 1 mile, CAT C vis to 1¾ miles, CAT D vis to 2 miles, CAT E vis to 2½ miles.
 ** Circling not authorized N of Rwy 12-30.

ALSF-1 (A1) MISSED APPROACH: Climb to 3000 via OFF TACAN R-133 to TYTAN and hold.

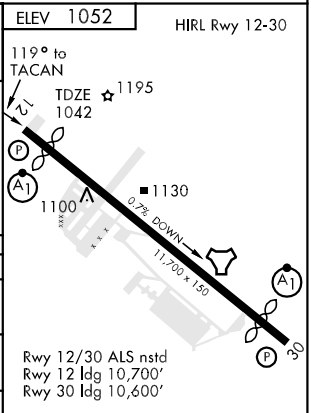
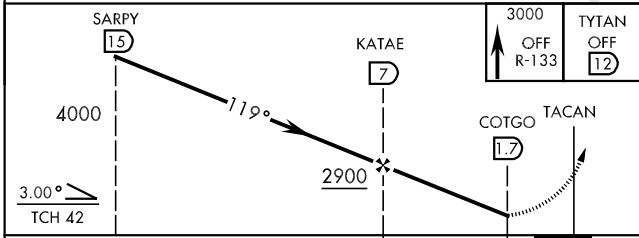
ATIS ★ 126.025 273.5	OMAHA APP CON E 124.5 263.0 W 120.1 354.05	OFFUTT TOWER 123.7 279.625	GND CON 121.7 289.4	PAR
--------------------------------	--	--------------------------------------	-------------------------------	-----

*** When ALS inop, RVR/vis increase not required.



† CAUTION: Terrain 1053 feet MSL, 200 to 250 feet from threshold, 360 to 400 feet left of course. USAF: When VGSI inop, straight-in procedures to RWY 12 at night requires approval from MAJCOM DO or equivalent.

EMERG SAFE ALT 100 NM 4800



CATEGORY	A	B	C	D	E
S-12 * †	1680/50	637 (700-1)	1680/60 637 (700-1¼)	1680-1½ 637 (700-1½)	1680-1¾ 637 (700-1¾)
CIRCLING **	1680-1	628 (700-1)	1680-1¾ 628 (700-1¾)	1680-2 628 (700-2)	2000-3 948 (1000-3)
S-PAR 12 *** †	1293/50		250 (300-1)	GS 3.0°	

Rwy 12/30 ALS nstd
 Rwy 12 ldg 10,700'
 Rwy 30 ldg 10,600'

NC-2, 22 OCT 2009 to 19 NOV 2009

NC-2, 22 OCT 2009 to 19 NOV 2009