

OMAHA, NEBRASKA

RNAV (GPS) RWY 30

APCH CRS **304°** Rwy ldg **10,600**
 TDZE **989**
 Arprt Elev **1052**

AL-544 [USAF]

OFFUTT AFB (KOFF)

▼ * When ALS inop, increase CAT A/B RVR to 50 and vis to 1 mile
 CAT C vis to 1½ miles, CAT D vis to 1¾ miles, CAT E vis to 2 miles.
 ** Circling not authorized N of Rwy 12-30.

ALSF-1 MISSED APPROACH: Climb to 4000 direct SOLGE and hold.

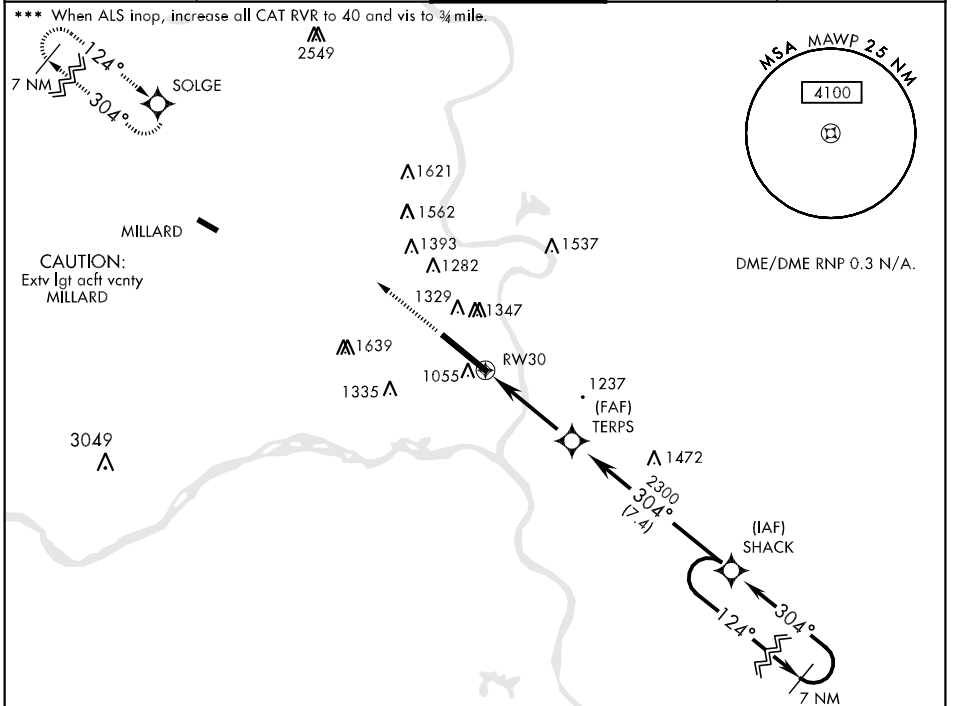
ATIS ★
126.025 273.5

OMAHA APP CON
E 124.5 263.0
W 120.1 354.05

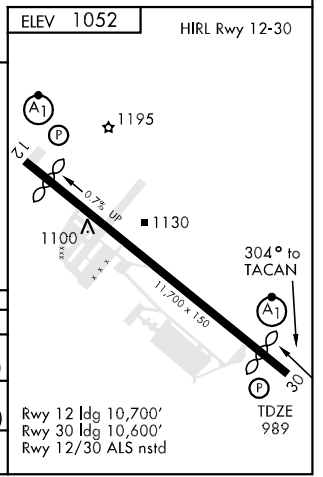
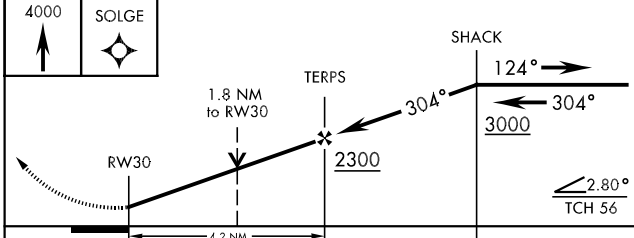
OFFUTT TOWER
123.7 279.625

GND CON
121.7 289.4

PAR



EMERG SAFE ALT 100 NM 4800



CATEGORY	A	B	C	D	E
LNAV MDA *	1580/24	591 (600-½)	1580/50 591 (600-1)	1580/60 591 (600-1¼)	1580/1½ 591 (600-1½)
CIRCLING **	1580-1 528 (600-1)	1600-1 548 (600-1)	1600-1½ 548 (600-1½)	1640-2 588 (600-2)	2000-3 948 (1000-3)
S-PAR 30 ***	1189/24		200 (200-½)	GS 2.8°	

OMAHA, NEBRASKA
 Orig 09015

41°07'N-95°54'W

OFFUTT AFB (KOFF)

RNAV (GPS) RWY 30

NC-2, 22 OCT 2009 to 19 NOV 2009

NC-2, 22 OCT 2009 to 19 NOV 2009