

LOC I-OFF <b>109.5</b>	APCH CRS <b>304°</b>	Rwy ldg <b>10,600</b> TDZE <b>989</b> Arprt Elev <b>1052</b>
---------------------------	-------------------------	--

AL-544 [USAF]

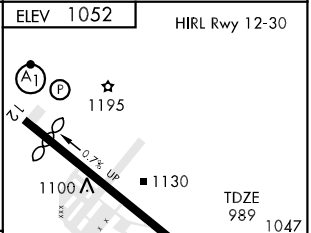
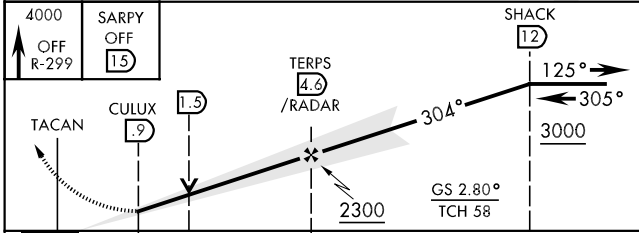
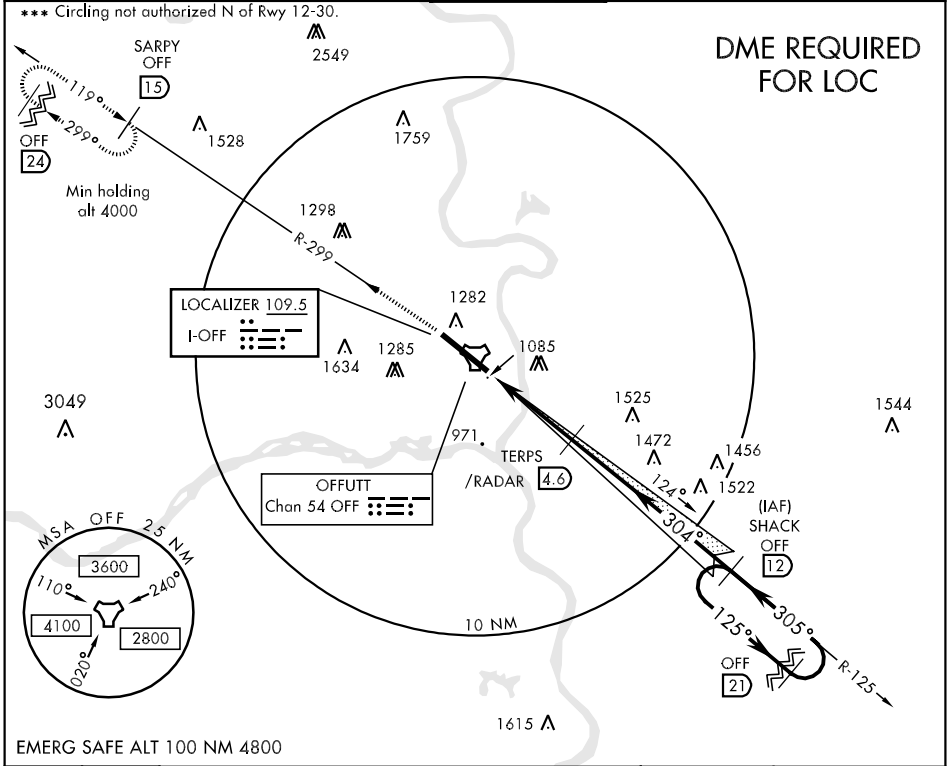
OFFUTT AFB (KOFF)

▼ \* When ALS inop, increase CAT ABCDE RVR to 40 and vis to ¾ mile.  
 \*\* When ALS inop, incr CAT ABC RVR to 50 and vis to 1 mile, CAT DE incr RVR to 60 and vis to 1¼ miles.



MISSED APPROACH: Climb to 4000 via OFF TACAN R-299 to SARPY and hold.

ATIS ★ <b>126.025 273.5</b>	OMAHA APP CON <b>E 124.5 263.0</b> <b>W 120.1 354.05</b>	OFFUTT TOWER <b>123.7 279.625</b>	GND CON <b>121.7 289.4</b>	PAR
--------------------------------	--	--------------------------------------	-------------------------------	-----



CATEGORY	A	B	C	D	E
S-ILS 30 *	1189/24		200	(200-½)	
S-LOC 30 **	1360/24	371 (400-½)	1360/40	371	(400-¾)
CIRCLING ***	1560-1	1600-1	1600-1½	1640-2	2000-3
	508 (600-1)	548 (600-1)	548 (600-1½)	588 (600-2)	948 (1000-3)
S-PAR 30 *	1189/24		200	(200-½) GS 2.8°	

Rwy 12/30 ALS nstd  
 Rwy 12 ldg 10,700'  
 Rwy 30 ldg 10,600'  
 304° 4.2 NM from TERPS

NC-2, 22 OCT 2009 to 19 NOV 2009

NC-2, 22 OCT 2009 to 19 NOV 2009