

TACAN OFF Chan <b>54</b>	APCH CRS <b>313°</b>	Rwy ldg <b>10,600</b> TDZE <b>989</b> Arprt Elev <b>1052</b>
-----------------------------	-------------------------	--

JAL-544 [USAF]

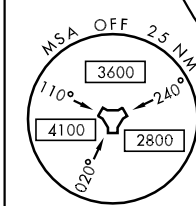
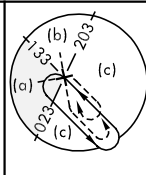
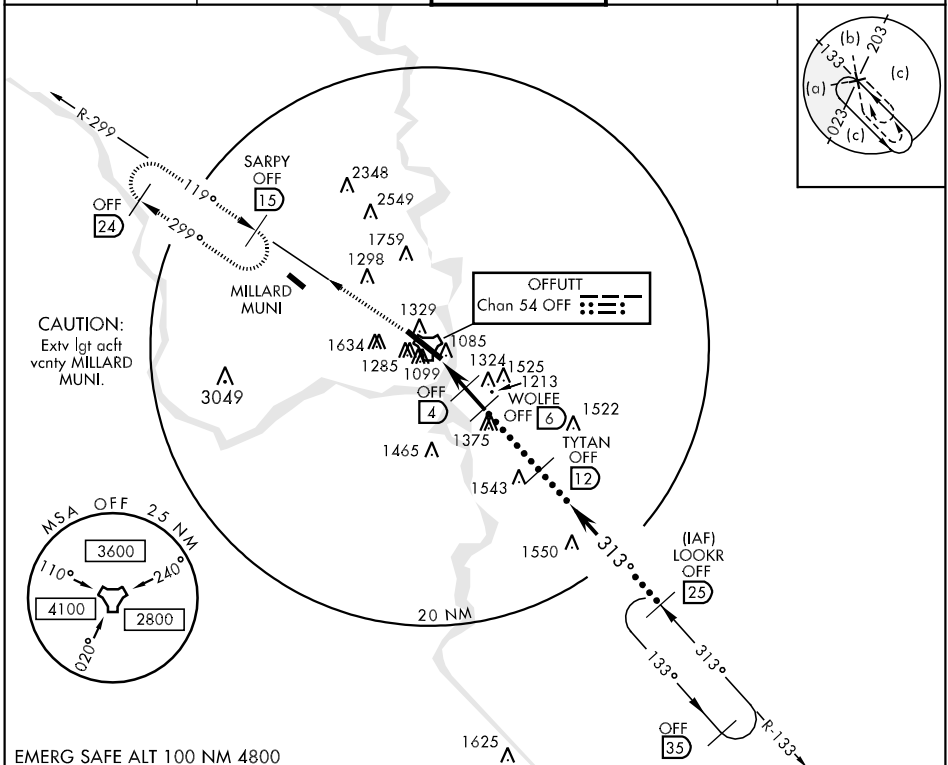
OFFUTT AFB (KOFF)

▼ \* When ALS inop, increase CAT C RVR to 60 and vis to 1 1/4 miles, CAT DE vis to 1 1/2 miles.  
 \*\* Circling not authorized N of Rwy 12-30.  
 \*\*\* When ALS inop, increase CAT CDE RVR to 40 and vis to 3/4 mile.

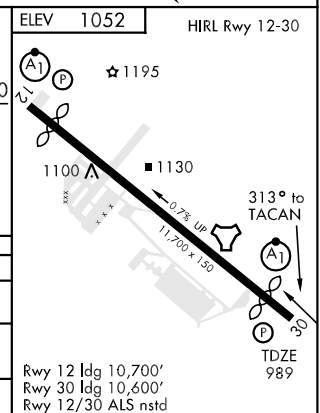
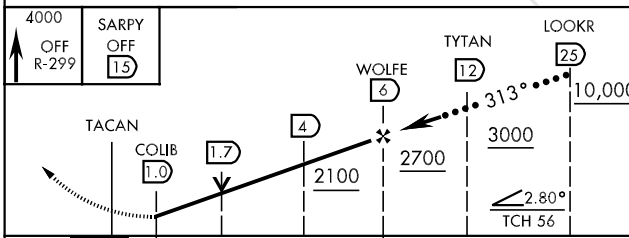


MISSED APPROACH: Climb to 4000 via OFF TACAN R-299 to SARPY and hold.

ATIS ★ <b>126.025 273.5</b>	OMAHA APP CON <b>E 124.5 263.0</b> <b>W 120.1 354.05</b>	OFFUTT TOWER <b>123.7 279.625</b>	GND CON <b>121.7 289.4</b>	PAR
--------------------------------	--	--------------------------------------	-------------------------------	-----



EMERG SAFE ALT 100 NM 4800



CATEGORY	C	D	E
S-30 *	1420/40 431(400-3/4)	1420/50	431 (400-1)
CIRCLING **	1600-1 1/2 548 (600-1 1/2)	1640-2 588 (600-2)	2000-3 948 (1000-3)
S-PAR 30 ***	1189/24	200 (200-1/2)	GS 2.8°

NC-2, 22 OCT 2009 to 19 NOV 2009

NC-2, 22 OCT 2009 to 19 NOV 2009