

NEEDLES, CALIFORNIA

AL-543 (FAA)

RNAV (GPS) RWY 29

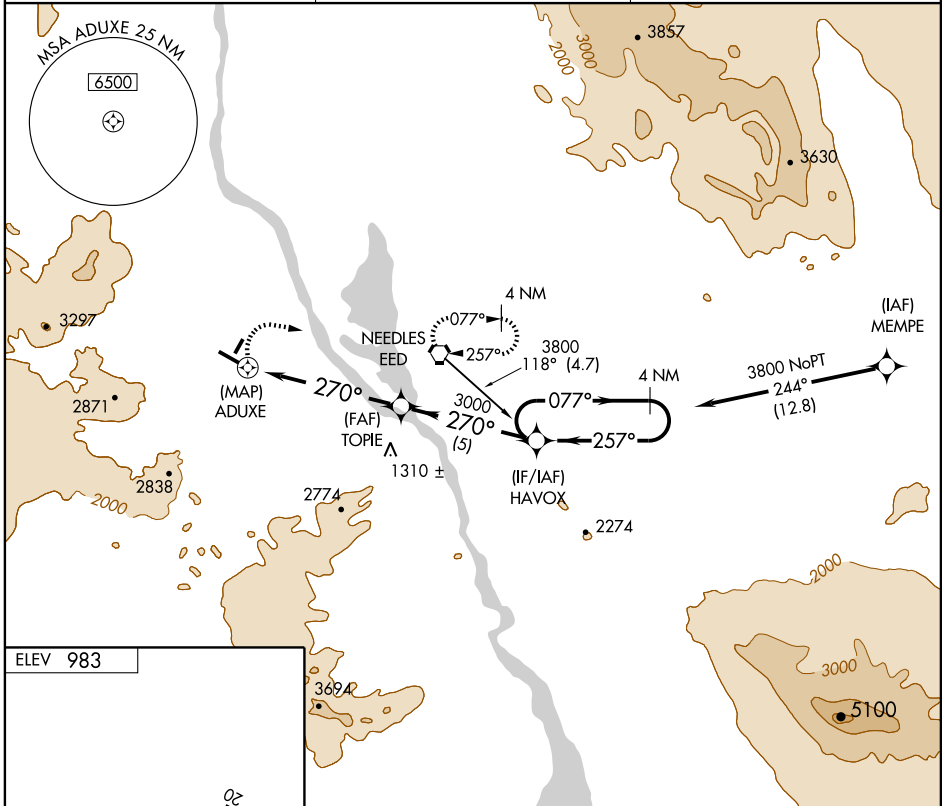
NEEDLES (EED)

APP CRS 270°	Rwy Idg 5005
	TDZE 956
	Apt Elev 983

Straight-in minimums not authorized at night.
 NA GPS or RNP-0.3 required. DME/DME RNP-0.3 NA.

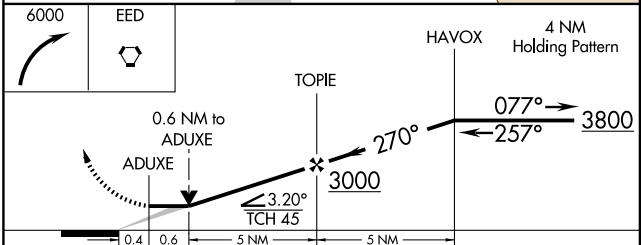
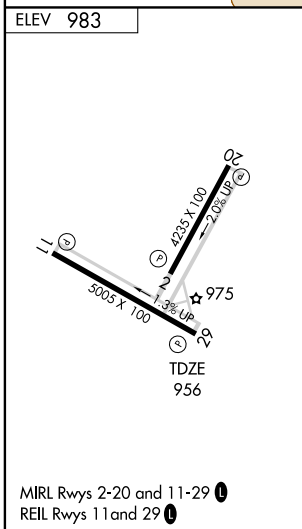
MISSED APPROACH: Climbing right turn to 6000 direct to EED VORTAC and hold.

ASOS 128.325	LOS ANGELES CENTER 134.65 360.65	UNICOM 123.0 (CTAF)
------------------------	--	-------------------------------



SW-3, 22 OCT 2009 to 19 NOV 2009

SW-3, 22 OCT 2009 to 19 NOV 2009



CATEGORY	A	B	C	D
LNAV MDA	1300-1	344 (400-1)	1300-1¼	344 (400-1¼)
CIRCLING	1560-1 577 (600-1)	1600-1 617 (700-1)	1620-1¾ 637 (700-1¾)	1780-2½ 797 (800-2½)

NEEDLES, CALIFORNIA
Orig 08157

34°46'N-114°37'W

NEEDLES (EED)

RNAV (GPS) RWY 29