

# RNAV (GPS) RWY 36

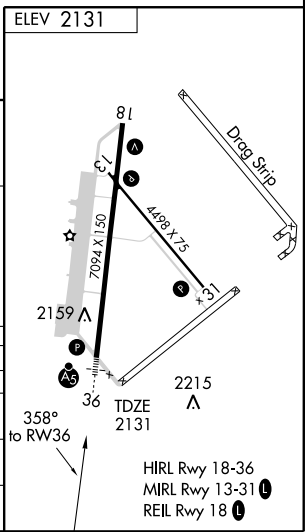
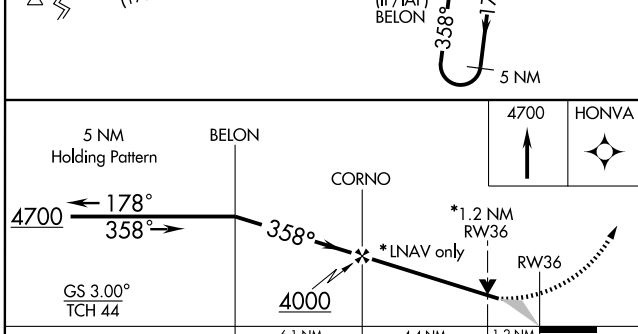
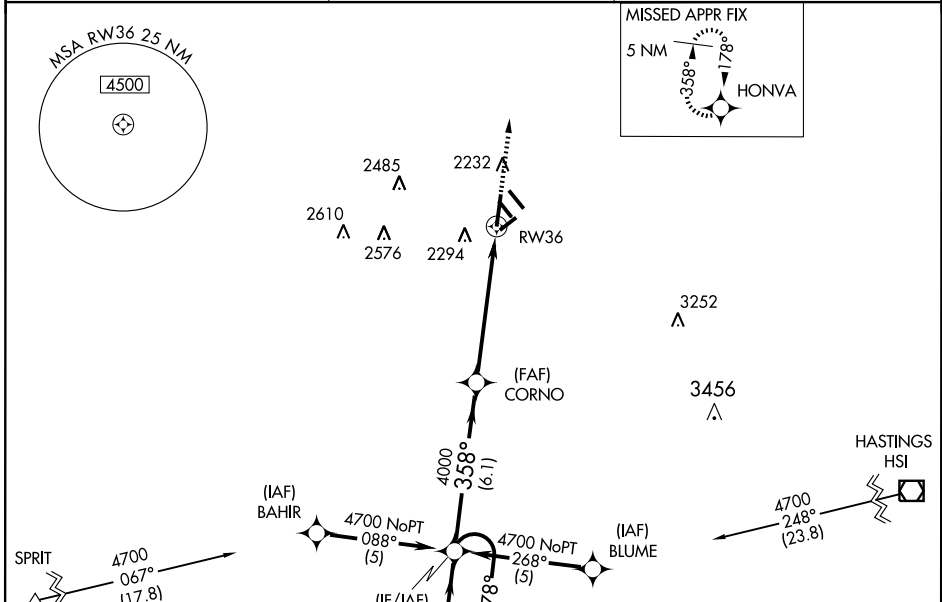
KEARNEY RGNL (E.A.R.)

WAAS CH <b>90113</b> <b>W36A</b>	APP CRS <b>358°</b>	Rwy Idg <b>7094</b> TDZE <b>2131</b> Apt Elev <b>2131</b>
--	------------------------	---

**▼** BARO-VNAV NA below -19°C (-2°F). DME/DME RNP-0.3 NA. If local altimeter setting not received, use Brewster Field altimeter setting and increase all DAs/MDAs 80 feet. BARO VNAV and VDP NA when using Brewster Field altimeter setting. For inoperative MALSR, increase LPV visibility all Cats to 1 mile, increase LNAV Cat D visibility to 1¼ mile.

**MALSR** MISSED APPROACH: Climb to 4700 direct HONVA and hold.

AWOS-3 <b>123.875</b>	MINNEAPOLIS CENTER <b>119.4 278.8</b>	UNICOM <b>123.0</b> (CTAF) <b>0</b>
--------------------------	--	--



CATEGORY	A	B	C	D
LPV DA		2390-½	259 (300-½)	
LNAV/DA VNAV		2580-1	449 (500-1)	
LNAV MDA	2540-½	409 (500-½)	2540-¾ 409 (500-¾)	2540-1 409 (500-1)
CIRCLING	2600-1½	469 (500-1½)		2700-2 569 (600-2)

NC-2, 22 OCT 2009 to 19 NOV 2009

NC-2, 22 OCT 2009 to 19 NOV 2009